

**Utility**  
**ACTi Mobile Explorer**  
**V2.0**

**User's Manual**



[www.acti.com](http://www.acti.com)



## **APP-2100**

This document is copyrighted, 2003 - 2007 by ACTi Corporation. All rights are reserved. ACTi Corporation reserves the right to make improvements to the products described in this manual at any time without notice.

No part of this manual may be reproduced, copied, translated or transmitted in any form or by any means without the prior written permission of the original manufacturer. Information provided in this manual is intended to be accurate and reliable. However, the original manufacturer assumes no responsibility for its use, or for any infringements upon the rights of third parties that may result from its use.

All other product names or trademarks are properties of their respective owners.

V2.0 Edition Apr, 2007

# Table of Contents

1.	OVERVIEW	5
	Introduction.....	5
	Function Specification .....	6
	Installation .....	7
	Overview .....	8
	Camera Setting Overview	8
	Menu Setting Overview	10
2.	GETTING STARTED	11
	Start Mobile Explorer & Setting .....	11
	Starting Explorer: Goto Start → Program Files → Mobile Explorer	11
	Select Camera ID	12
	Select Streaming Type	13
	Apply Changes	14
	Setting PTZ .....	16
	Click PTZ Button	16
	Select PTZ Protocol File	17
	Setup Address IP	18
	Setup Control	19
	Display.....	21
	Display_On_Setting	21
	Display_On_Preview	23
	Connect.....	24
	On Connecting	24
	On Connecting Failed	25
	On Connecting Failed when switch camera	26
	Preview.....	27
	Preview	27
	PTZ On Click Move .....	28
	Move Up	28
	Move Down	29
	Move Left	30
	Move Right	31
	Move Up Left	32
	Move Up Right	33
	Move Down Left	34
	Move Down Right	35
	Zoom In	36
	Zoom Out	37

3. MENU	38
PTZ Settings .....	38
PTZ Set Preset	38
PTZ Goto Preset	39
PTZ OSD	40
PTZ OSD On	41
PTZ Speed	42
Quad Setting .....	43
Quad Switch	43
Audio Setting .....	44
Audio In	44
Audio Out	45
Trigger DO1 .....	46
Trigger DO1	46
Return .....	47
Return	47
Quit -- 48	
Quit	48

# Table of Figures

Figure 1-1 Camera Setting Overview .....	8
Figure 1-2 Menu Setting Overview .....	10
Figure 2-1 Start Explorer .....	11
Figure 2-2 Camera Setting_1 .....	12
Figure 2-3 Camera Setting_2 .....	13
Figure 2-4 Apply Changes_1 .....	14
Figure 2-5 Apply Changes_2 .....	15
Figure 2-6 StartUp PTZ .....	16
Figure 2-7 Select PTZ Protocol File .....	17
Figure 2-8 Setup Address ID .....	18
Figure 2-9 Setup Control_1 .....	19
Figure 2-10 Setup Control_2 .....	20
Figure 2-11 Display On Setting .....	21
Figure 2-12 Display On Preview .....	23
Figure 2-13 On connecting .....	24
Figure 2-14 On connecting Failed_1 .....	25
Figure 2-15 On connecting Failed_2 .....	26
Figure 2-16 On Preview .....	27
Figure 2-17 PTZ Move Up .....	28
Figure 2-18 PTZ Move Down .....	29
Figure 2-19 PTZ Move Left .....	30
Figure 2-20 PTZ Move Right .....	31
Figure 2-21 PTZ Move Up Left .....	32
Figure 2-22 PTZ Move Up Right .....	33
Figure 2-23 PTZ Move Down Left .....	34
Figure 2-24 PTZ Move Down Right .....	35
Figure 2-25 PTZ Zoom In .....	36
Figure 2-26 PTZ Zoom Out .....	37
Figure 3-1 PTZ Set Preset .....	38
Figure 3-2 PTZ Goto Preset .....	39
Figure 3-3 PTZ OSD .....	40
Figure 3-4 PTZ OSD On .....	41
Figure 3-5 PTZ Speed .....	42
Figure 3-6 Quad Switch .....	43
Figure 3-7 Camera Name .....	44
Figure 3-8 Audio .....	45
Figure 3-9 Trigger DO1 .....	46
Figure 3-10 Return .....	47
Figure 3-11 Quit .....	48

# 1. Overview

## Introduction

### Hardware Spec

1. Supported OS:
  - Windows Mobile 5.0
  - Windows Mobile 6.0
  - Pocket PC 2003
2. Supported CPU:
  - Intel Xscale Series (624 Mhz recommended)
  - Samsung Series
  - TI OMAP Series
3. Tested Devices
  - HP iPaq HX2790b (recommended)
  - Dopod CHT9100, P800W, D810
  - ETEN M500
  - Note that PTZ control is implemented with touch-screen control. If your mobile device does not support touch-screen control, then you cannot operate PTZ operation.
4. Supported Video Profile (benchmarked with HP iPaq HX2790b)
  - D1@6 FPS with 1.5 Mbps
  - CIF@15 FPS with 1.5 Mbps
  - CIF@30 FPS with 500 Kbps
  - Note that you need to adjust the video profile according to your mobile devices' performance

# Function Specification

## Function Spec

1. Add support to 16 channels
2. Add support to all ACTi Devices, including streaming type TCP 1.0 and TCP 2.0
3. Add support to all ACTi product lines, including LPL, EPL and MPL
4. Add support to Quad device. User may control 1, 2, 3, 4, Quad view
5. Add support to Speed Dome PTZ control
6. Add support to on-screen PTZ, 8-directional PT control + zoom in/out
7. Add support to set preset and goto preset PTZ operation
8. Add support to PTZ OSD operations
9. Add support to PTZ speed adjustment
10. Add support to 2-way audio support.
11. Add support to camera name display on screen
12. Add support to event display on screen, including motion detection event and digital input event
13. Add support trigger digital output
14. Add support to switch channel by 1 click.



# Installation

There are 2 files provided:

1. ACTi\_Mobile-Explorer\_v2.0(PC2PPC).exe: This file is used to run under PC, then the ACTi Mobile Explorer v2.0 will be installed on the Pocket PC
2. ACTi\_Mobile-Explorer\_v2.0(PPC).cab: This file is used to run under Pocket PC. You need to copy this file into Pocket PC, and execute this file under Pocket PC.

# Overview

## Camera Setting Overview



Figure 1-1 Camera Setting Overview

1. **CameraID** : Define this IP camera to Identify.

2. **Name :** Define this camera a name.
3. **Camera IP :** IP of the camera.
4. **Channel NO. :** Number of Channel of this IP camera.
5. **Register :** Default 6000.
6. **Control Port :** Default 6001.
7. **User Name :** Name to login this IP camera.
8. **Password :** Password to login this IP camera.
9. **Display Camera Name :** Display camera name on preview.
10. **Display MD/DI Event :** Display Event Detect.
11. **PTZ :** If this IP camera is support PTZ , Enable It.
12. **Quad :** If this IP camera is a quad camera , Enable It.
13. **Add To Switch Group : ...**
14. **Streaming Type :** TCP 1.0 or TCP 2.0 .
15. **Streaming Port :** Default 6002.
16. **Http Port :** Default 80.
17. **Load Default :** Load default settings.
18. **Apply :** With any change , Please save your change with 'Apply'.
19. **Play :** Preview Video.
20. **Exit :** Leave this Program.

## Menu Setting Overview



Figure 1-2 Menu Setting Overview

1. **Pop-Up Menu Button** : Show Menu.
2. **PTZ Set Preset** : Set PTZ Preset.
3. **PTZ Goto Preset** : Go to PTZ Preset.
4. **PTZ OSD** : On Screen Display Menu.
5. **PTZ Speed** : Set Camera Move Speed.
6. **Quad Switch** : Set Quad Monitor.
7. **Audio In** : Turn On/Off Volume.
8. **Audio Out** : Turn On/Off Microphone.
9. **Trigger DO1** : Send DO1 Signal to Device
10. **Return** : Return to Camera Setting Page.
11. **Quit** : Quit this program.

## 2. Getting Started

### Start Mobile Explorer & Setting

Starting Explorer: Goto Start → Program Files → Mobile Explorer



Figure 2-1 Start Explorer

1. **MobileExplorer** : Click here to execute this program.

## Select Camera ID



Figure 2-2 Camera Setting\_1

1. **CameraID:** Choose a Camera ID.
2. **Apply :** Save this Change.

## Select Streaming Type



Figure 2-3 Camera Setting\_2

1. **Streaming Type** : Choose TCP 2.0 or TCP 1.0.
2. **Apply** : Save This Change.



## Apply Changes

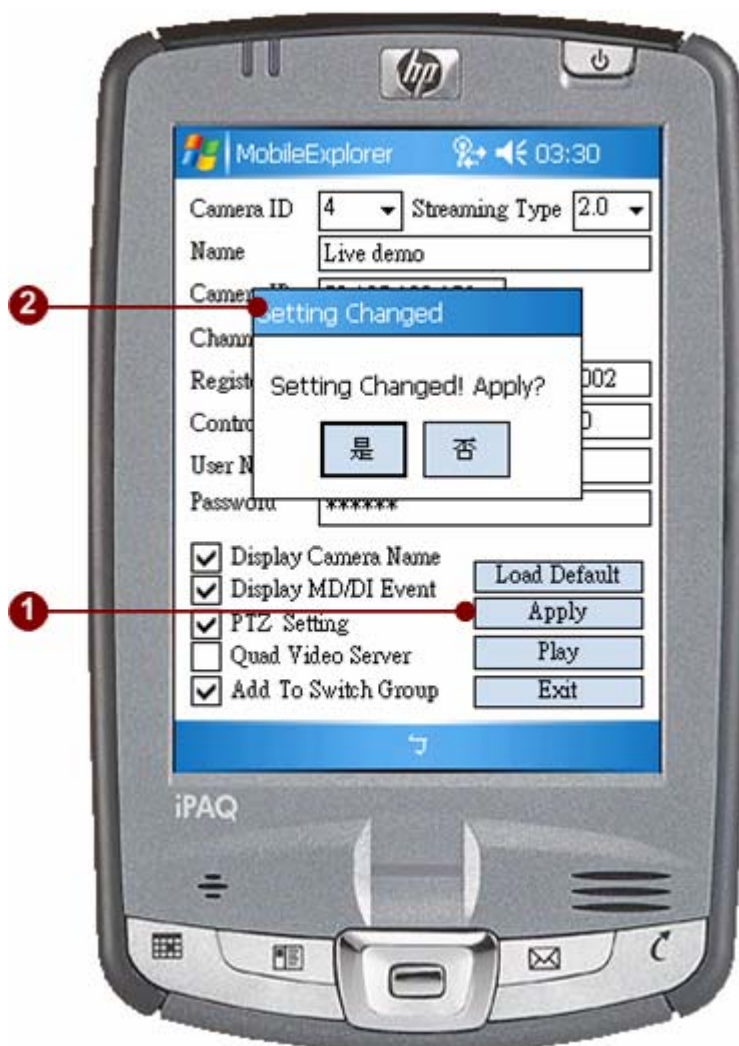


Figure 2-4 Apply Changes\_1

1. **Apply** : Press Apply
2. **Setting Changed Alert** : Make sure to save settings..





Figure 2-5 Apply Changes\_2

1. **Apply Setting Alert** : Setting Saved.

# Setting PTZ

## Click PTZ Button

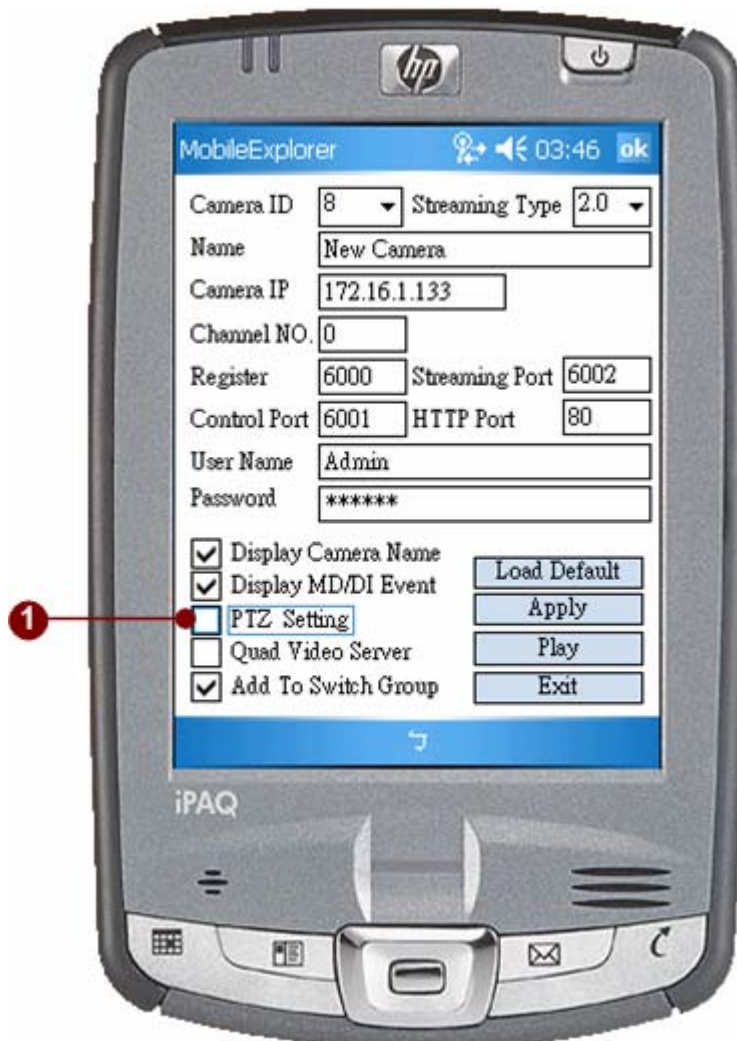


Figure 2-6 StartUp PTZ

1. **PTZ** : Click this button to startup PTZ.

## Select PTZ Protocol File

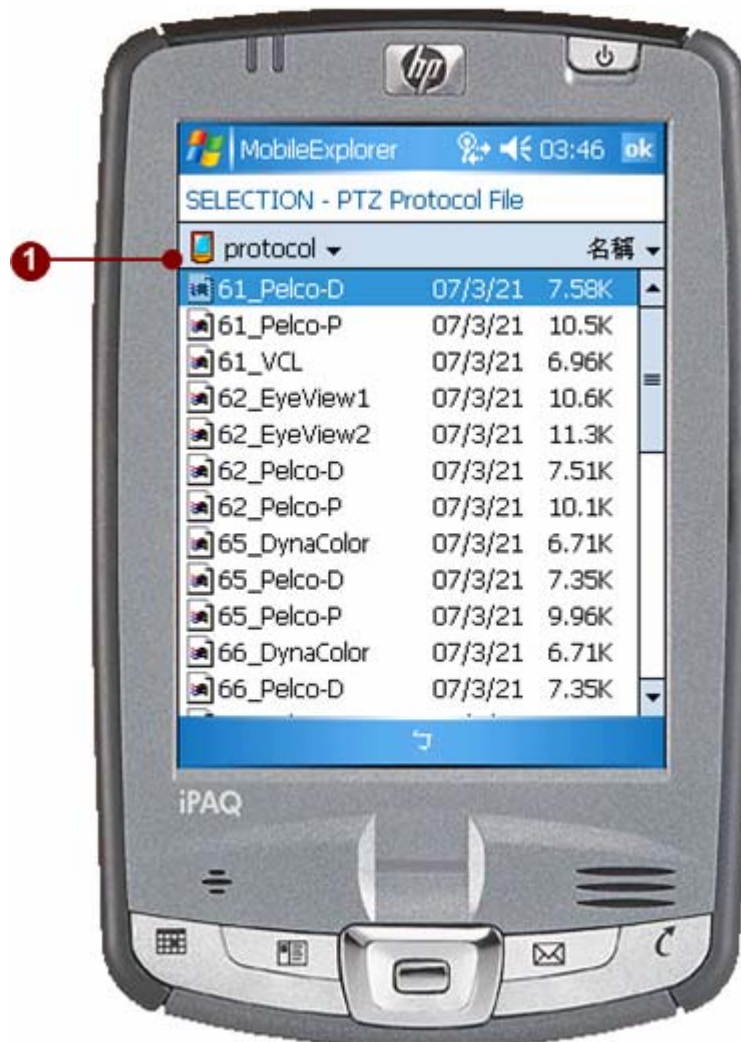


Figure 2-7 Select PTZ Protocol File

1. **Select PTZ protocol files :** Choose a PTZ protocol file that suit your camera.

## Setup Address IP

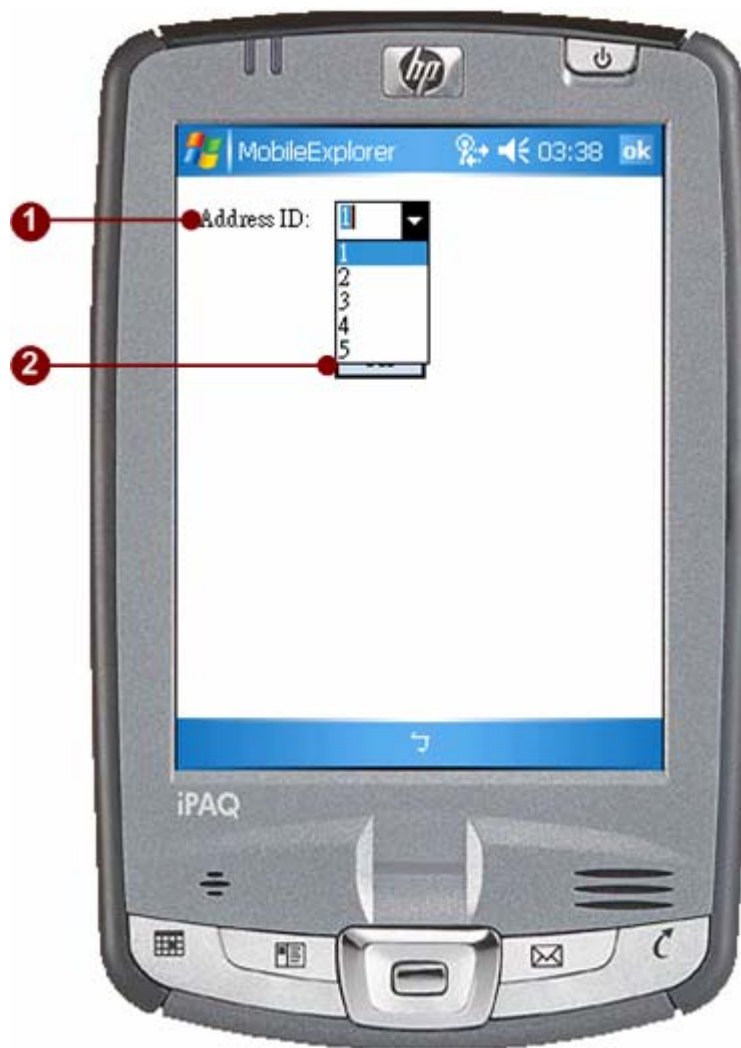


Figure 2-8 Setup Address ID

1. **Address ID** : Choose Address ID of camera
2. **OK** : Press OK to apply.

## Setup Control



Figure 2-9 Setup Control\_1

1. **Control :** Choose PTZ Control.



Figure 2-10 Setup Control\_2

2. **Baud Rate :** Choose a Baud Rate.



# Display

## Display\_On\_Setting



Figure 2-11 Display On Setting

1. **Display Camera Name** : Display camera name on preview.

2. **Display MD/DI Event :** Detect MD/DI event.
3. **Apply :** Save Settings.



## Display\_On\_Preview



Figure 2-12 Display On Preview

1. **Camera Name** : Display Camera Name Here.
2. **MD** : On Motion Detect.
3. **DI** : On Digital Input.

# Connect

## On Connecting



Figure 2-13 On connecting

1. **Connecting** : Connect to the IP camera with preview.

## On Connecting Failed



Figure 2-14 On connecting Failed\_1

1. **Connecting Failed** : Connect Failed.

## On Connecting Failed when switch camera

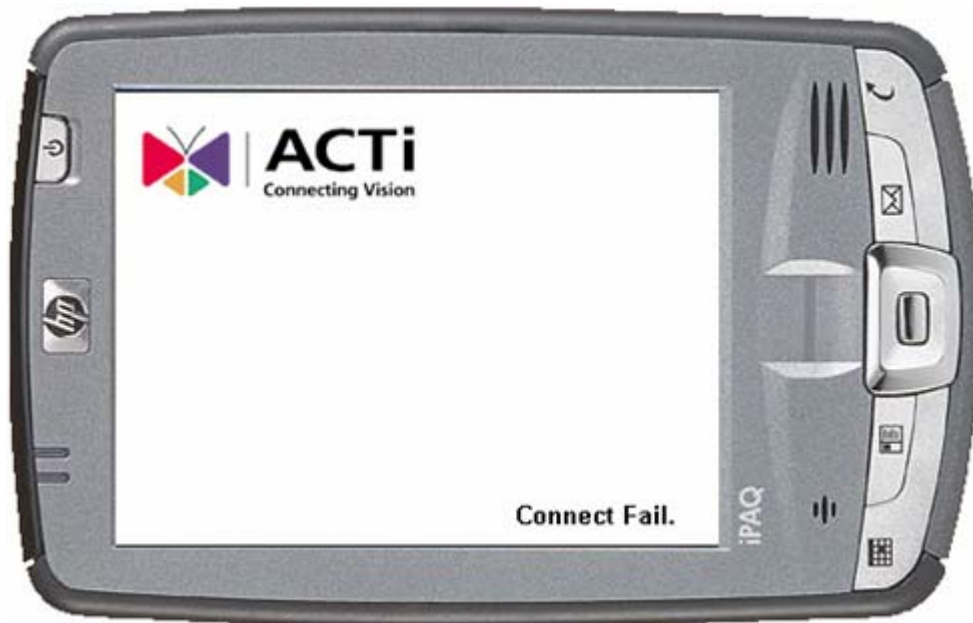


Figure 2-15 On connecting Failed\_2

# Preview

## Preview



Figure 2-16 On Preview

# PTZ On Click Move

## Move Up



Figure 2-17 PTZ Move Up

1. **Move Up** : Click Here To Move Camera Up.

## Move Down



Figure 2-18 PTZ Move Down

2. **Move Down** : Click Here To Move Camera Down.



## Move Left



Figure 2-19 PTZ Move Left

3. **Move Left** : Click Here To Move Camera Left.



## Move Right

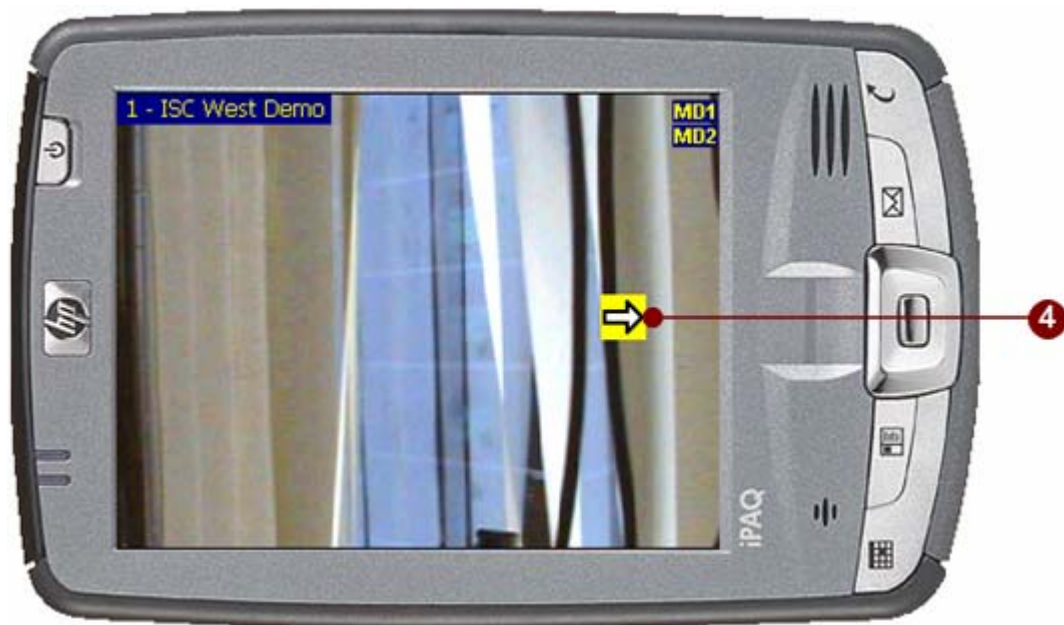


Figure 2-20 PTZ Move Right

4. **Move Right** : Click Here To Move Camera Right.

## Move Up Left

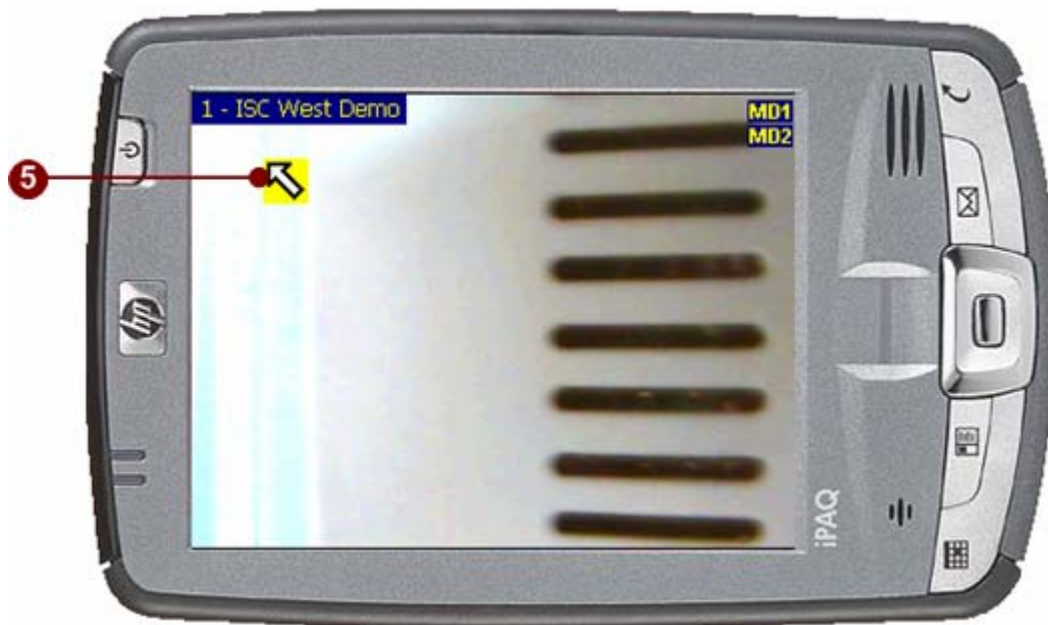


Figure 2-21 PTZ Move Up Left

5. **Move Up Left** : Click Here To Move Camera Up Left.

## Move Up Right



Figure 2-22 PTZ Move Up Right

6. **Move Up Right** : Click Here To Move Camera Up Right.

## Move Down Left



Figure 2-23 PTZ Move Down Left

7. **Move Down Left** : Click Here To Move Camera Down Left.

## Move Down Right



Figure 2-24 PTZ Move Down Right

8. **Move Down Right** : Click Here To Move Camera Down Right.

## Zoom In



Figure 2-25 PTZ Zoom In

9. **Zoom In :** Click Here To Zoom In.



## Zoom Out



Figure 2-26 PTZ Zoom Out

10. **Zoom Out** : Click Here To Zoom Out.

# 3. Menu

## PTZ Settings

### PTZ Set Preset

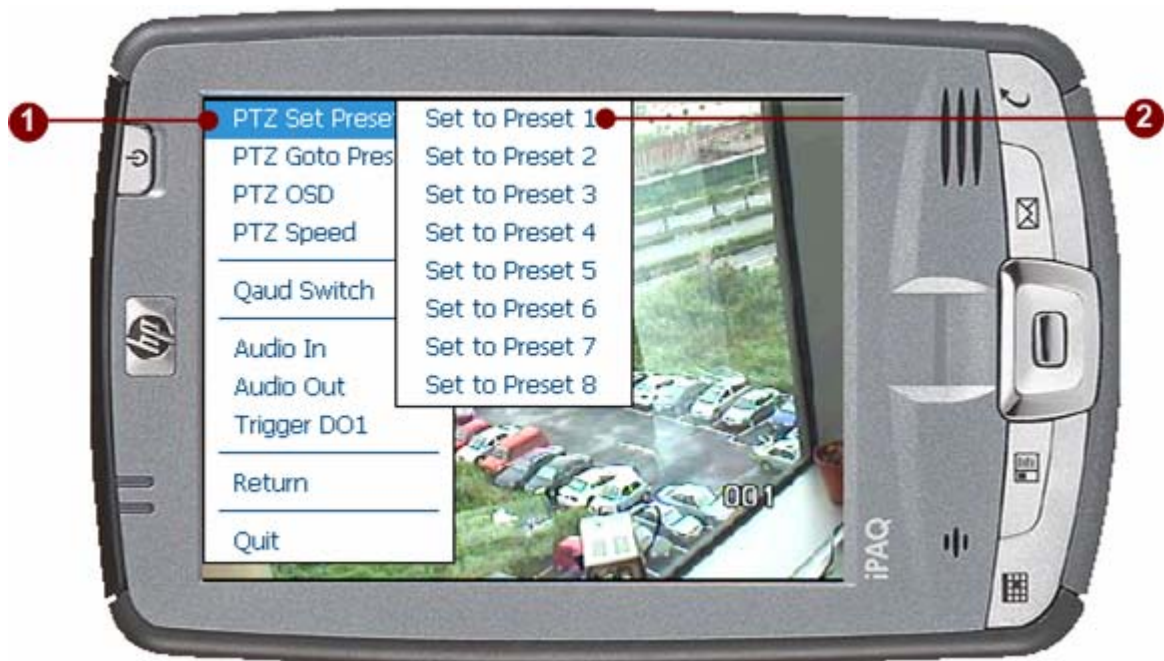


Figure 3-1 PTZ Set Preset

1. **PTZ Set Preset** : User can click this button to set PTZ preset.
2. **Set Preset Location** : Set the PTZ preset.



## PTZ Goto Preset

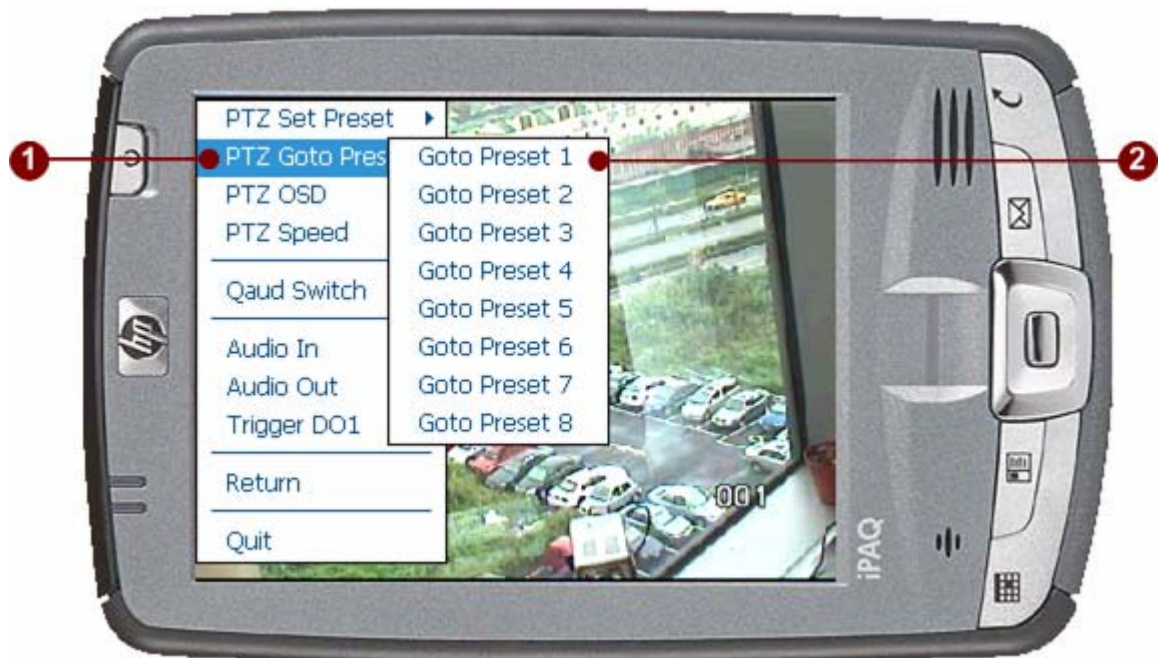


Figure 3-2 PTZ Goto Preset

1. **PTZ Goto Preset** : User can click this button to Goto PTZ preset.
2. **Goto Preset** : Go to PTZ Preset.

## PTZ OSD

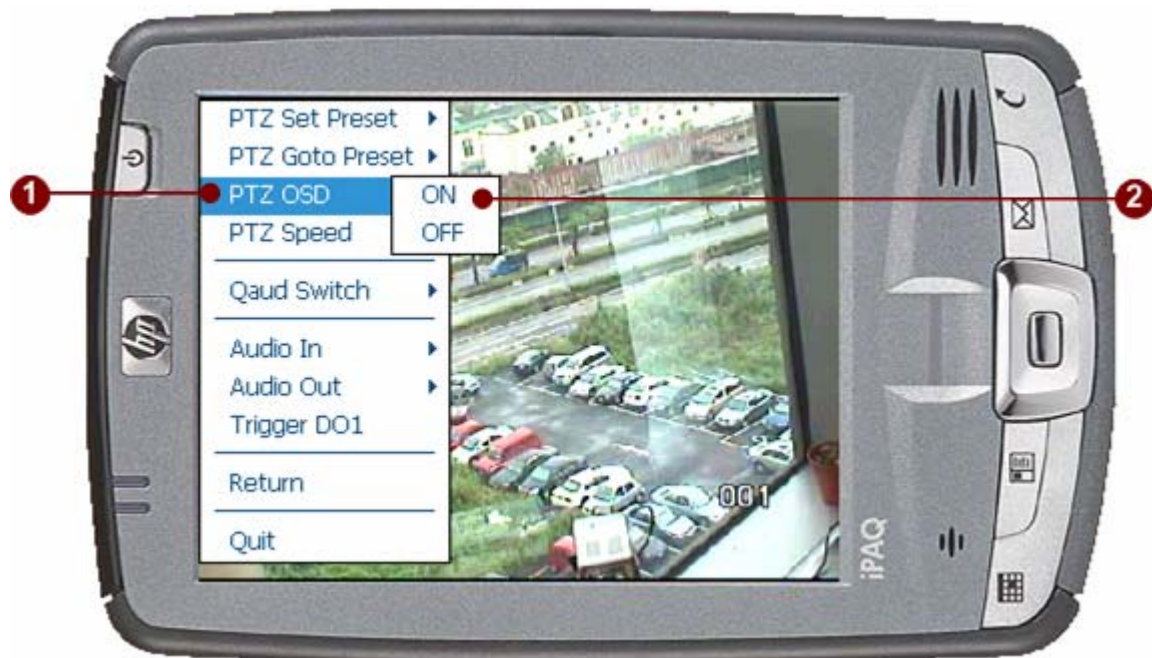


Figure 3-3 PTZ OSD

1. **PTZ OSD** : User can click this button to set PTZ OSD.
2. **On/Off** : Enable/Disable PTZ OSD.

## PTZ OSD On



Figure 3-4 PTZ OSD On

1. **PTZ OSD On** : PTZ OSD will show on the screen.

## PTZ Speed

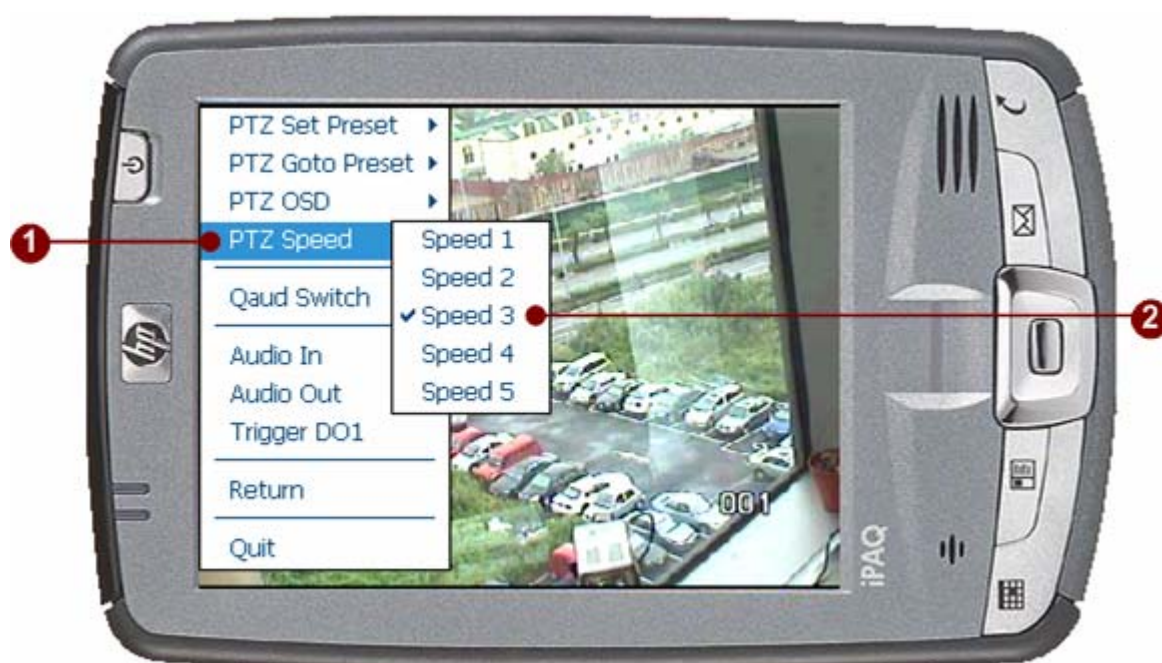


Figure 3-5 PTZ Speed

1. **PTZ Speed** : User can click this button to set PTZ Speed.
2. **Speed** : Choose a speed to set this camera.

# Quad Setting

## Quad Switch



Figure 3-6 Quad Switch

1. **Quad Switch** : User can click this button to set monitor mode.
2. **Monitor** : Select monitor mode of the quad camera.



# Audio Setting

## Audio In

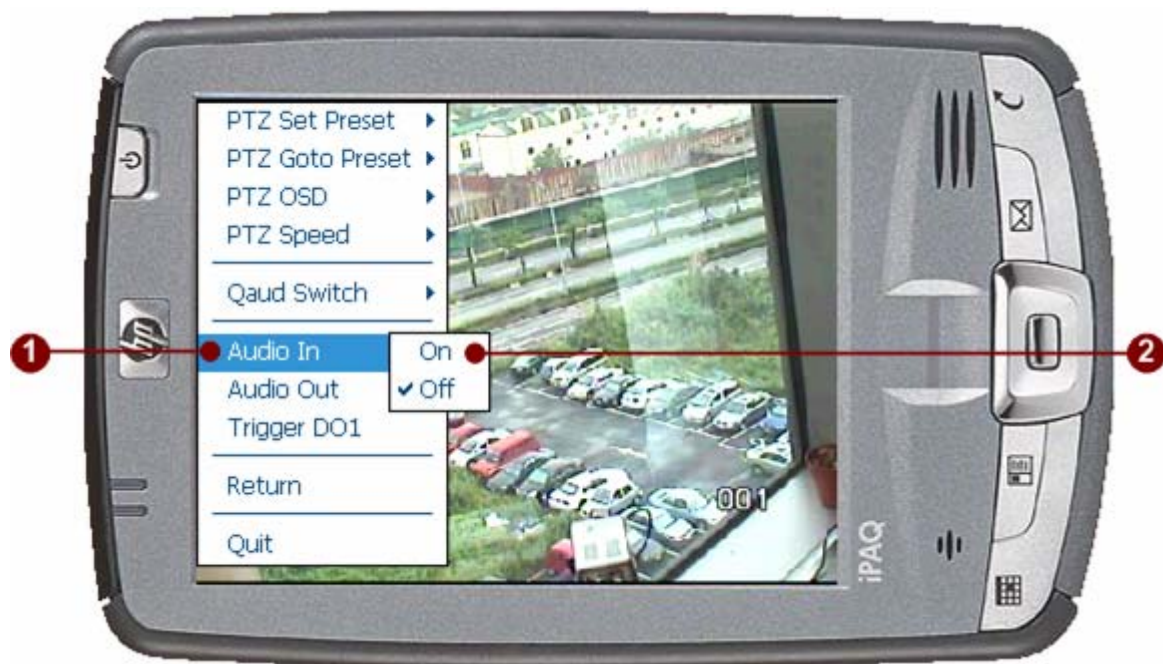


Figure 3-7 Camera Name

1. **Audio In** : User can click this button to set Audio In
2. **On/Off** : Set Audio On/Off

## Audio Out



Figure 3-8 Audio

1. **Audio Out** : User can click this button to set Audio Out
2. **On/Off** : Set Audio On/Off

# Trigger DO1

## Trigger DO1



Figure 3-9 Trigger DO1

1. **Trigger DO1** : User can click this button to set Audio Out



# Return

## Return



Figure 3-10 Return

1. **Return** : Return to preview screen and close menu.

# Quit

## Quit



Figure 3-11 Quit

1. **Quit** : Quit preview mode and back to camera setting screen.