

# Pocket Client: Getting Started

---

## Portable Control of Intellex

Pocket Client lets you display live video and control Intellex cameras on your iPAQ Pocket PC. It is engineered specifically for the HP iPAQ and Windows Mobile 2003 operating system.

### Basic features

Pocket Client connects over a wireless network to Intellex units. No special setup is required on the Intellex. Pocket Client appears as a Network Client connection to the Intellex. Only live video and camera control are supported. Downloading of stored video and events are not supported.

### System Requirements

- HP iPAQ device running Microsoft Windows Mobile 2003
- ARM processor
- 320x240 screen resolution (not tested for VGA resolution)
- IEEE 802.11.a, b, or g wireless network. (Dial up modems are not supported.)

## Installing Pocket Client



Psetup.msi

### **Note**

Before installing Pocket Client, be sure you have your iPAQ device connected to your PC and that you have Microsoft Active Sync v. 3.7 or higher installed.

- 1 After downloading the Pocket Client application from the American Dynamics Web site, double-click the application from your desktop to launch the Pocket Client Setup Wizard.
- 2 Follow the onscreen instructions.

### **Note**

During installation, Pocket Client installs the file GX.dll on your Pocket PC. On your Pocket PC, tap No if asked whether to replace an already existing GX.dll file.

## Setting Up Pocket Client

- 1 Turn on iPAQ Wireless to establish a wireless network connection.
- 2 From the Start menu, tap Pocket Client to launch the application. The main screen appears.

### Intellex location selector

Tap and select network from dropdown list.

### Camera selector

Tap and select camera from dropdown list.

### Full screen

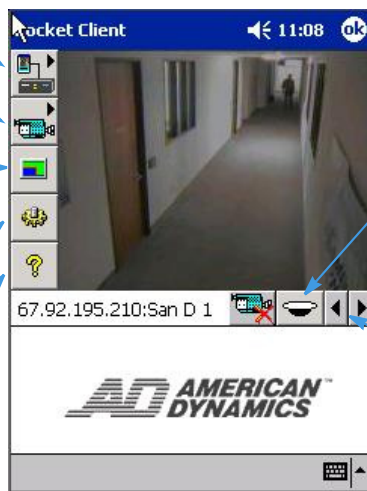
Tap to expand to full-screen horizontal mode.

### Settings

Tap to enter appropriate settings.

### About

Tap to see application info and version.



### Dome camera control

Tap icon, then use device's direction pad to direct camera.  
(Icon grayed out when not a dome camera.)

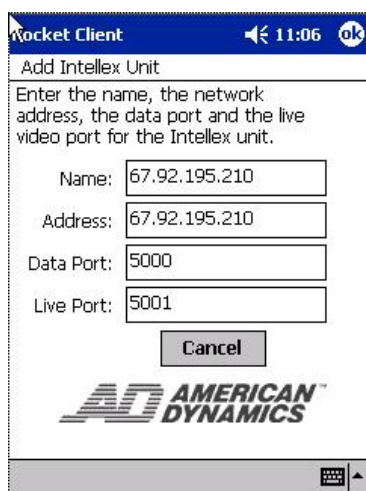
### Next and Previous camera selection

### Note

For lengthy camera viewing, set your iPAQ to not turn off while on battery power so you won't lose your wi-fi connection. To do so, tap Start>Settings>System>Power, click the Control tab, and uncheck "Turn off device if not used for".

## Setting Up Intellex Units

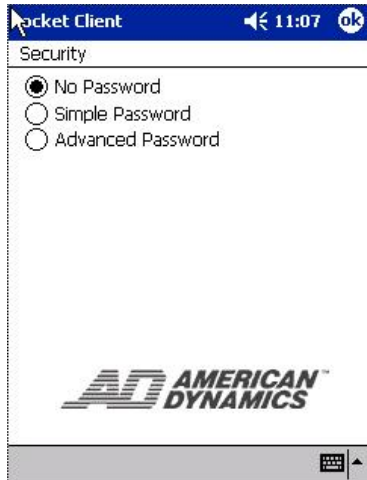
- 1 Tap the Settings icon, tap Intellex Units, then tap Add.



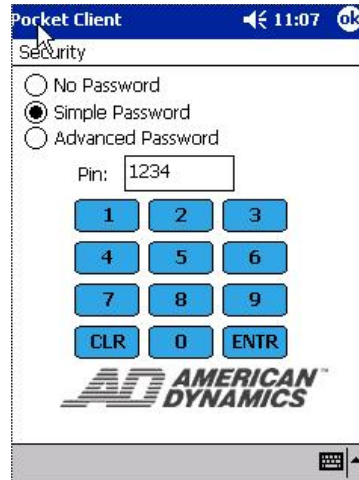
- 2 Enter information for Name, (Network) Address, Data Port, and Live (Video) Port for the Intellex unit you're adding, then tap the OK button (upper-right corner).
- 3 Continue Step 2 to add additional Intellex units, then tap OK when you are finished.

## Setting Up Security

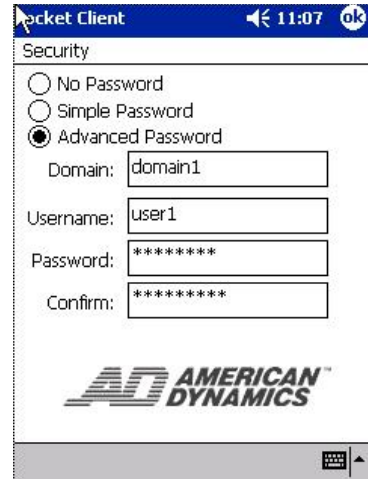
- 1 Tap the Settings icon, then tap Security.
- 2 Select No Password, Simple Password, or Advanced Password, as appropriate, for security control of Pocket Client.



No password required for accessing Pocket Client.



Enter a password from 4-6 characters, then tap ENTR to confirm, or CLR to clear entry.



Enter Domain, Username, Password, then confirm password. Use if Intellex units are running Advanced Security.

- 3 Tap OK when you are finished.