

VCA Quick Start Guide

Contents

1. Configuration.....	3
1.1 IP device configuration.....	3
1.2 Software configuration.....	4
2. Using VCA in the software.....	5

1. Configuration

In order to use the VCA functionality in the server software, the proper configuration of VCA IP device and the Software is required.

1.1 IP device configuration

Note: Described configuration has been made with use of IPE1100M IP camera

1. Access the device over the webbrowser (IE is recommended)
2. Select "SETUP" (login and password for IP device is required), expand "Event Configuration" menu, point to "VCA", and select "Subscriber – TCP" option.

IPE1100M VIEW | SETUP

Basic Configuration
Video & Audio
Event Configuration
DI
DO
Video
Motion Detection
VCA
Network
Health

System Options
IO Configuration
Maintenance
VCA
Motion Detect
Activation
About

Publisher - VCA

Subscriber - DO
All Zone DO #1

Subscriber - Email
 Post notification message Attach a snapshot

Subscriber - Multicast
 Post notification message

Subscriber - TCP Post notification message

Subscriber - FTP
 Post notification message

v1.03.06

- Expand “VCA” menu, enable VCA functionality, and define Zones and Rules of analytics as required.

IPE1100M

The screenshot shows the 'Zones and Rules' configuration window in the IPE1100M software. On the left is a navigation menu with options like 'Basic Configuration', 'Video & Audio', 'Event Configuration', 'System Options', 'IO Configuration', 'Maintenance', 'VCA', 'Motion Detect', 'Activation', and 'About'. The 'VCA' menu is expanded, showing sub-options: 'Enable/Disable', 'Zones and Rules', 'Calibration', 'Classification', 'Tamper Detection', 'Burnt-in Annotation', 'Advanced', and 'Load/Save Settings'. The 'Zones and Rules' sub-option is selected.

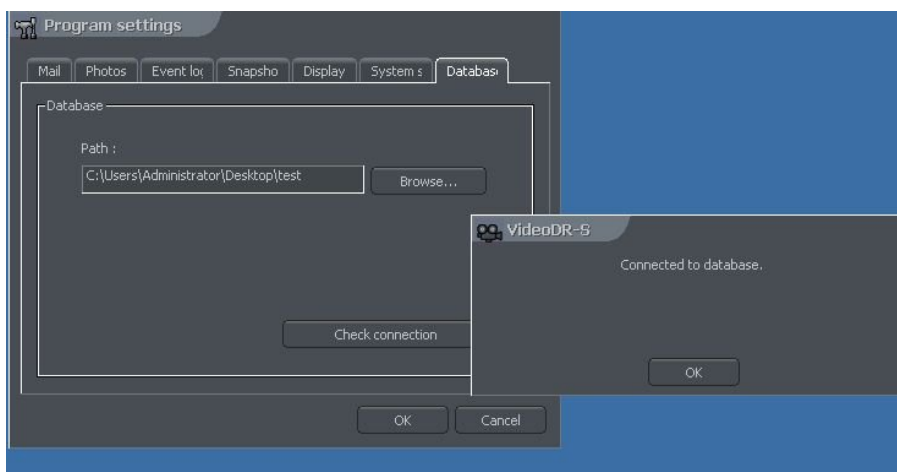
The main area displays a video feed of an office scene with a red polygonal zone overlaid on it. The zone is labeled 'Zone 0' and has a red color. A white arrow icon is visible within the zone. Below the video feed, there is a table with columns: 'Id', 'Rule Type', 'Rule Name', 'Zone Name', 'Start Time', and 'End Time'. The table is currently empty.

On the right side, there is a 'Tree' view showing the configuration hierarchy:


Tree	Value
Zone 0	Zone 0
Name	Zone 0
Color	Red
Type	Detection
<input checked="" type="checkbox"/> Presence	Rule 0
<input checked="" type="checkbox"/> Enter	Zone 0-Enter
<input checked="" type="checkbox"/> Exit	Zone 0-Exit
<input checked="" type="checkbox"/> Appear	Zone 0-Appear
<input checked="" type="checkbox"/> Disappear	Zone 0-Disappear
<input checked="" type="checkbox"/> Stopped	Zone 0-Stopped
<input type="checkbox"/> Dwell	
<input checked="" type="checkbox"/> Direction Filter	Zone 0-Direction Filter
<input type="checkbox"/> Tailgating	
<input type="checkbox"/> Left/Taken Object	

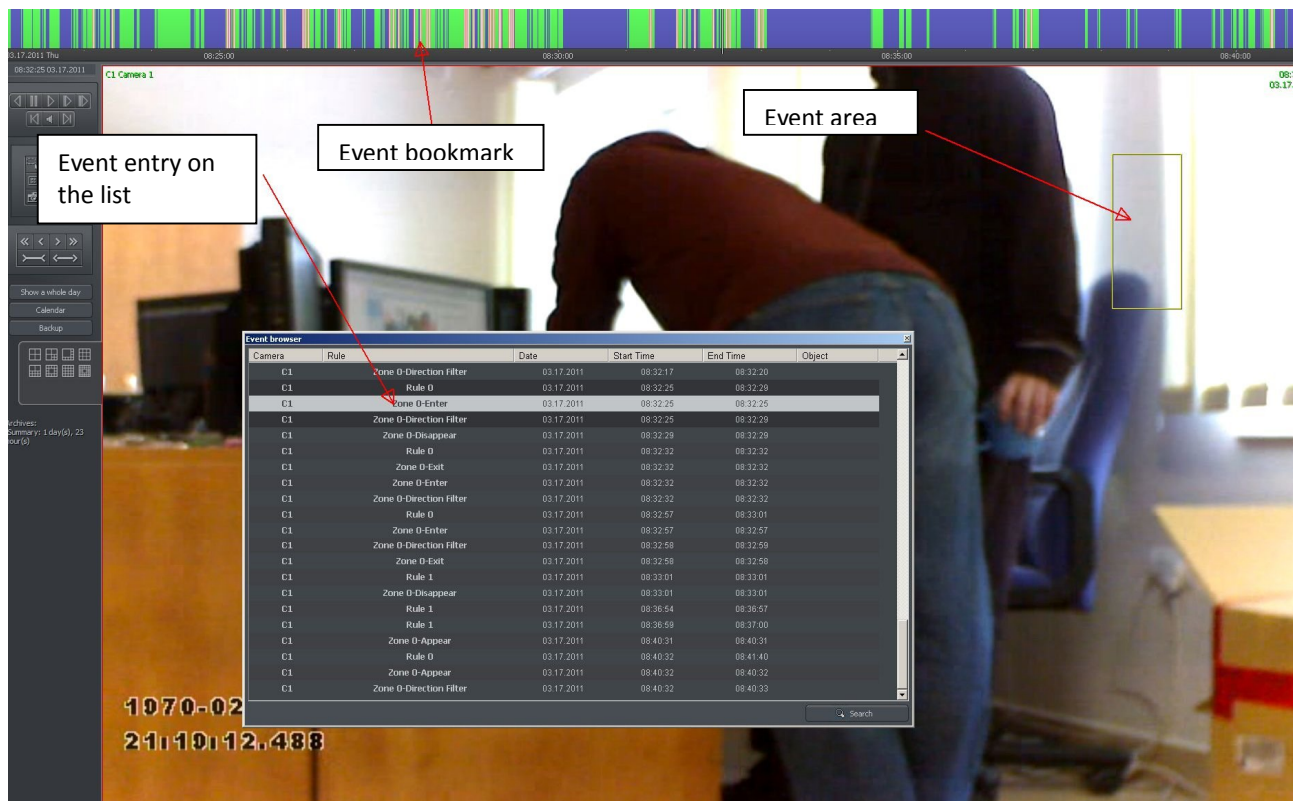
1.2 Software configuration

- Add IP device using Configuration Wizard
- Create VCA Events Database:
 - Configuration -> Program settings -> Database -> select “Browse” and point to folder (or create one) where the Database file will be stored
 - Confirm connection with database, using “Check connection” button – if connection is correctly established, the confirmation window will appear




2. Using VCA in the software

1. While archive is opened, and the recording timeline (green bars on top) of camera is visible, press the Photo browser icon  (this is just temporary, additional icon for Event browser will be added later on) – Event browser window will open.
2. Click “Search” button to display / refresh all events from currently visible time range.



On the picture above, red bookmarks on the timeline indicate VCA events. Place the mouse cursor over the bookmark to see details of the event. Either clicking on the bookmark or selecting event on the event browser list, will automatically move the archive cursor to corresponding timeframe in the archive, showing the camera recording and event area (area, which has triggered the VCA event).

Playing back the archive, while Event browser window is opened, will automatically highlight the corresponding events.

3. You may also filter Event browser events by type, choosing required rule type from dropdown list and pressing refresh icon 



Camera		Date	Start Time	End Time	Object
C5		03.23.2011	11:26:07	11:26:19	
C5		03.23.2011	11:26:07	11:26:07	
C5		03.23.2011	11:26:07	11:26:10	
C5	zone 0-Stopped	03.23.2011	11:26:09	11:26:16	
C5	Zone 0-Stopped	03.23.2011	11:26:13	11:26:16	
C5	Zone 0-Exit	03.23.2011	11:26:16	11:26:16	
C5	Zone 0-Direction Filter	03.23.2011	11:26:16	11:26:19	
C5	terefere	03.23.2011	11:26:16	11:26:18	
C5	Zone 0-Disappear	03.23.2011	11:26:19	11:26:19	
C5	presence_rule_1	03.23.2011	11:26:23	11:26:29	
C5	Zone 0-Appear	03.23.2011	11:26:23	11:26:24	
C5	Zone 0-Direction Filter	03.23.2011	11:26:24	11:26:25	
C5	presence_rule_1	03.23.2011	11:26:25	11:26:27	
C5	terefere	03.23.2011	11:26:25	11:26:26	
C5	Zone 0-Direction Filter	03.23.2011	11:26:25	11:26:26	
C5	Zone 0-Exit	03.23.2011	11:26:27	11:26:27	
C5	presence_rule_1	03.23.2011	11:26:27	11:26:27	
C5	terefere	03.23.2011	11:26:27	11:26:27	
C5	Zone 0-Direction Filter	03.23.2011	11:26:27	11:26:27	
C5	Zone 0-Exit	03.23.2011	11:26:27	11:26:27	
C5	Zone 0-Disappear	03.23.2011	11:26:29	11:26:31	