



Server Application
ACTi NVR
v2.0

Quick Installation Guide



www.acti.com

ACTi APP-2000

This document is copyrighted, 2003 - 2007 by ACTi Corporation. All rights are reserved. ACTi Corporation reserves the right to make improvements to the products described in this manual at any time without notice.

No part of this manual may be reproduced, copied, translated or transmitted in any form or by any means without the prior written permission of the original manufacturer. Information provided in this manual is intended to be accurate and reliable. However, the original manufacturer assumes no responsibility for its use, or for any infringements upon the rights of third parties that may result from its use.

All other product names or trademarks are properties of their respective owners.

V2.0 Edition Mar, 2007

Table of Contents

1. ADMINISTRATOR'S CHECK LIST	5
Administrator's Check List	5
Operator Check List	7
System Requirements	8
Supported Operating System and Browser	8
Recommended PC Specification – 16 channels	9
Recommended PC Specification – 32 channels	9
Recommended PC Specification – 48 channels	9
Recommended PC Specification – 64 channels	9
Database	10
2. INSTALLATING THE SOFTWARE	11
NVR Server vs. NVR Workstation vs. Web Client	11
Install NVR Server	12
Step 1: Backup Database	13
1. Click on Step 1: Backup Database Link	13
2. Use Backup Database to backup database	14
Step 2. Install NVR Main Program	15
1. Click on Step 2: Install NVR Main Program link	15
2. Install Pre-requisite for ACTi NVR Server	16
3. Install Database Engine	18
4. Install NVR Main Program	18
6. Default Installation Path: C:\Program Files\ACTi\NVR	19
7. Change Installation Path	20
8. Connecting to Database and Importing Default Value to Database	21
9. Install NVR Server Package	22
10. NVR Server Installation	23
11. NVR Server Installation Completed	24
12. Restart System	24
Step 3. Configure IIS Web Service (IIS Required)	25
1. Check IIS Services	26
2. Install IIS under Windows XP	27
3. Install IIS under Windows 2003 Standard Edition	32
4. Configure IIS	35
Step 4. Use Backup Database to restore database back to NVR Server	40
Install NVR Workstation.....	41
Step 1. Install NVR Main Program	42
1. Click on Step 2: Install NVR Main Program link	42
2. Install NVR Main Program	43
3. Default Installation Path: C:\Program Files\ACTi\NVR	44
4. Change Installation Path	45
5. Connecting to Database and Import Default Value to Database	46
6. Install NVR Server Package	47
7. Disable NVR Server Installation	48
8. Install NVR Workstation Complete	49

3.	LICENSE MANAGEMENT	50
	16-Channel Free, 32/48/64-Channel License	50
	How to Setup 16-Channel License	50
	How to Setup 32/48/64-Channel License.....	51
	How to obtain license	51
	How to install license	51
	Registration By License Key	52
	Registration By Activation Key	53
	License Registration Messages	55
	How to check license	56
	How to renew license	56
4.	ADDING DEVICES	57
	Create Camera Group	57
	Add a camera	58
5.	CHANGE MONITOR LAYOUT	59
	Setup Layout.....	59
6.	SCHEDULE RECORDING	60
7.	ARCHIVING	60
8.	PTZ SETTING	60
9.	EVENT ACTION SETTING	61
10.	ACCOUNT SETUP	61
11.	REMOTE CLIENT LOGIN	62
	How to Login.....	62

Table of Figures

Figure 2-1 ACTi NVR Server Auto-Run Program	12
Figure 2-2 Step 1: Backup Database	13
Figure 2-3 Backup database data from ACTi NVR Server	14
Figure 2-4 Step 2: Install NVR Main Program	15
Figure 2-5 Display Prerequisites for ACTi NVR Server	16
Figure 2-6 Installing Prerequisites for ACTi NVR Server	17
Figure 2-7 Installing Database Engine	18
Figure 2-8 Installing ACTi NVR Main Program	18
Figure 2-9 Default Installation Path: C:\Program Files\ACTi\NVR	19
Figure 2-10 Change Installation Path.....	20
Figure 2-11 Connecting to Database and Importing Default Value to Database	21
Figure 2-12 Select Complete option to install ACTi NVR Server.....	22
Figure 2-13 ACTi NVR Server Installation.....	23
Figure 2-14 ACTi NVR Server Installation Complete	24
Figure 2-15 Click Yes button to re-start the system.....	24
Figure 2-16 Configure IIS Web Service	25
Figure 2-17 Select Start -> Control Panel -> Add or Remove Program	27
Figure 2-18 Locate IIS Package location.....	28
Figure 2-19 Installing IIS Service.....	28
Figure 2-20 Click Finish to complete installation.....	29
Figure 2-21 Select Add/Remove Windows Components.....	30
Figure 2-22 Select Application Server	30
Figure 2-23 Select Internet Information Services (IIS)	31
Figure 2-24 Select Start -> Control Panel -> Add or Remove Program	32
Figure 2-25 Select Add/Remove Windows Components.....	33
Figure 2-26 Select Application Server	33
Figure 2-27 Select Internet Information Services (IIS)	34
Figure 2-28 Select Administrative Tools.....	35
Figure 2-29 Select Internet Information Services (IIS)	36
Figure 2-30 Select IIS Properties.....	37
Figure 2-31 Configure IIS Path, Default: C:\Program Files\ACTi\NVR\IPControlCenter	37
Figure 2-32 Configure IIS Documents	38
Figure 2-33 Restore data from ACTi NVR Server.....	40
Figure 2-34 ACTi NVR Server Auto-Run Program	41
Figure 2-35 Step 2: Install NVR Main Program	42
Figure 2-36 Installing ACTi NVR Main Program to install ACTi NVR Workstation	43
Figure 2-37 Default Installation Path: C:\Program Files\ACTi\NVR	44
Figure 2-38 Change Installation Path.....	45
Figure 2-39 Connecting to Database and Importing Default Value to Database	46
Figure 2-40 Select Custom option to install ACTi NVR Workstation.....	47
Figure 2-41 Disable NVR Server Option	48
Figure 2-42 Complete NVR Workstation Installation	49
Figure 3-1 Register by License Key	52
Figure 3-2 Register by Activation Key.....	53

1. Administrator's Check List

Administrator's Check List

Objective: To guide the administrator through the system setup.

Description: Please go through the checklist below for what items should be set.

NOTE: You can find the Quick Installation Guide and User Manual in the CD of the package.

No	Status	Description	Main Category	Reference
Pre-install				
1	<input type="checkbox"/>	Check PC requirement	To ensure the software running well, please make sure the PC spec is compatible with the software.	<u>Quick Installation Guide</u> Ch 1-Administrator's Check List
2	<input type="checkbox"/>	Prepare Software license	Our software has 16CH/32CH/48CH/64CH packages. Our software is free for 16CH. For 32CH/48CH/64CH please refer to license section for details.	<u>Quick Installation Guide</u> Ch 1-Administrator's Check List
Install				
1	<input type="checkbox"/>	Install Software	Please follow the installation guide step by step to install the software.	<u>Quick Installation Guide</u> Ch 2-Installing the Software
2	<input type="checkbox"/>	Check installation	After installation, please also check the below items before you move to next step.	<u>Quick Installation Guide</u>
			1. License input	<u>Quick Installation Guide</u> Ch 3-License Management
Setup				
1	<input type="checkbox"/>	Create Camera Group and add cameras	NVR camera channel management is based on camera groups. Start by creating camera groups and adding cameras. Ex: There are 4 floors in this system. You can start by creating 1F, 2F, 3F, 4F, 4 groups. When adding every single camera, you can select the group which it belongs to.	<u>User Manual</u> Ch 7 ActiveSetup
2	<input type="checkbox"/>	Configure Camera Setup	Set some camera settings, like PTZ setting, bit rate.	<u>User Manual</u> Ch 7 ActiveSetup
3	<input type="checkbox"/>	Configure Scheduling	Set the recording schedule for every single camera.	<u>User Manual</u> Ch 7 ActiveSetup

4	<input type="checkbox"/>	Configure Event handling	Set the action related to different events	User Manual Ch 7 ActiveSetup
5	<input type="checkbox"/>	Configure Storage	Set the HD arrangement and recording delete rule for storage	User Manual Ch 7 ActiveSetup
6	<input type="checkbox"/>	Configure Preview layout	Set the preview layout during preview	User Manual Ch 7 ActiveSetup
7	<input type="checkbox"/>	Configure E-map (Option)	Set the E-map.	User Manual Ch 7 ActiveSetup
8	<input type="checkbox"/>	Configure Accounts	Set the you accounts and select authentication level	User Manual Ch 7 ActiveSetup

Operator Check List

Objective: To guide the operator through the operation.

Description: Please go through the checklist below for what items should operator know.

NOTE: You can find the Quick Installation Guide and Operation Manual in the package of the CD.

No	Status	Main Category	Description	Reference
Setup				
1	<input type="checkbox"/>	Live Preview	Operator should be able to see the live preview and to do basic operations.	<u>User Manual</u> Ch 3 Active Monitor
2	<input type="checkbox"/>	PTZ control	Operator should be able to control the PTZ	<u>User Manual</u> Ch 3 Active Setup
3	<input type="checkbox"/>	E-map Preview	Operator should be able to launch the E-map preview and to do basic operations.	<u>User Manual</u> Ch 5 Active MAP
4	<input type="checkbox"/>	Search & Playback	Set the action related to different events	<u>User Manual</u> Ch 4 Active Player
5	<input type="checkbox"/>	Web-client Access operation	Set the action related to different events	<u>User Manual</u> Ch 6 Web-Client

System Requirements

Supported Operating System and Browser

Supported Operating System:

Operating System	Comments
Windows XP	Windows XP SP2
Windows 2003	Windows 2003 Server, WSS 2003

Supported Browser:

Operating System	Comments
Microsoft Internet Explorer v6.0	IE 6.0 with the most updated service pack
Microsoft Internet Explorer v7.0	IE 7.0 with the most updated service pack



NOTE: Windows 2000 and Windows Vista series have not been tested yet.

Recommended PC Specification – 16 channels

Supported PC Specification for 16-channel:

Item.	Specification
CPU	Intel Core 2 Duo 2.4 GHz
Memory	1 GB
HDD	250 GB

Recommended PC Specification – 32 channels

Supported PC Specification for 32-channel:

Item.	Specification
CPU	Intel Core 2 Duo 2.66 GHz
Memory	2 GB
HDD	250 GB

Recommended PC Specification – 48 channels

Supported PC Specification for 48-channel:

Item.	Specification
CPU	Intel Core 2 Quad 2.66 GHz
Memory	4 GB
HDD	250 GB

Recommended PC Specification – 64 channels

Supported PC Specification for 64-channel:

Item.	Specification
CPU	Intel Core 2 Quad 2.66 GHz
Memory	4 GB
HDD	250 GB



NOTE: AMD chip and X64 series have not been tested yet.

Database

Do not install any database in the system, including Microsoft SQL Server 2000, 2005, MSDE, MySQL, IBM DB2, IBM Informix, Oracle Database or any other SQL Servers.



IMPORTANT: Do not install any database in the system. If there is any database in the system, please remove it first.

2. Installing the Software

NVR Server vs. NVR Workstation vs. Web Client

This section covers ACTi NVR installation. In ACTi NVR package, you can select following mode to install:

1. Complete Installation (recommended): This will install NVR Server and NVR Workstation.
2. Custom Installation: You can select either NVR Server or NVR Workstation or both to install.

	Recording	Preview	Playback
NVR Server	•		
NVR Workstation		•	•



IMPORTANT: There should be at least one NVR Server in your system, if not, please choose Complete Installation.



IMPORTANT: When you install NVR Server, the database installed from previous version will be removed. If those information are important, please make sure you backup the database and restore it later on with Backup Wizard..

Install NVR Server

To install ACTi NVR Server, please insert the ACTi NVR Server CD-ROM; the system will prompt up with an auto-run program.



Figure 2-1 ACTi NVR Server Auto-Run Program

 **IMPORTANT:** Make sure you backup data from database using Backup Wizard before installation

Step 1: Backup Database

If you had installed ACTi NVR Server, you can use Backup Wizard to backup database, and restore it after you install the new version.

For detailed operation, please refer to [Backup Wizard User manual](#).

1. Click on [Step 1: Backup Database](#) Link

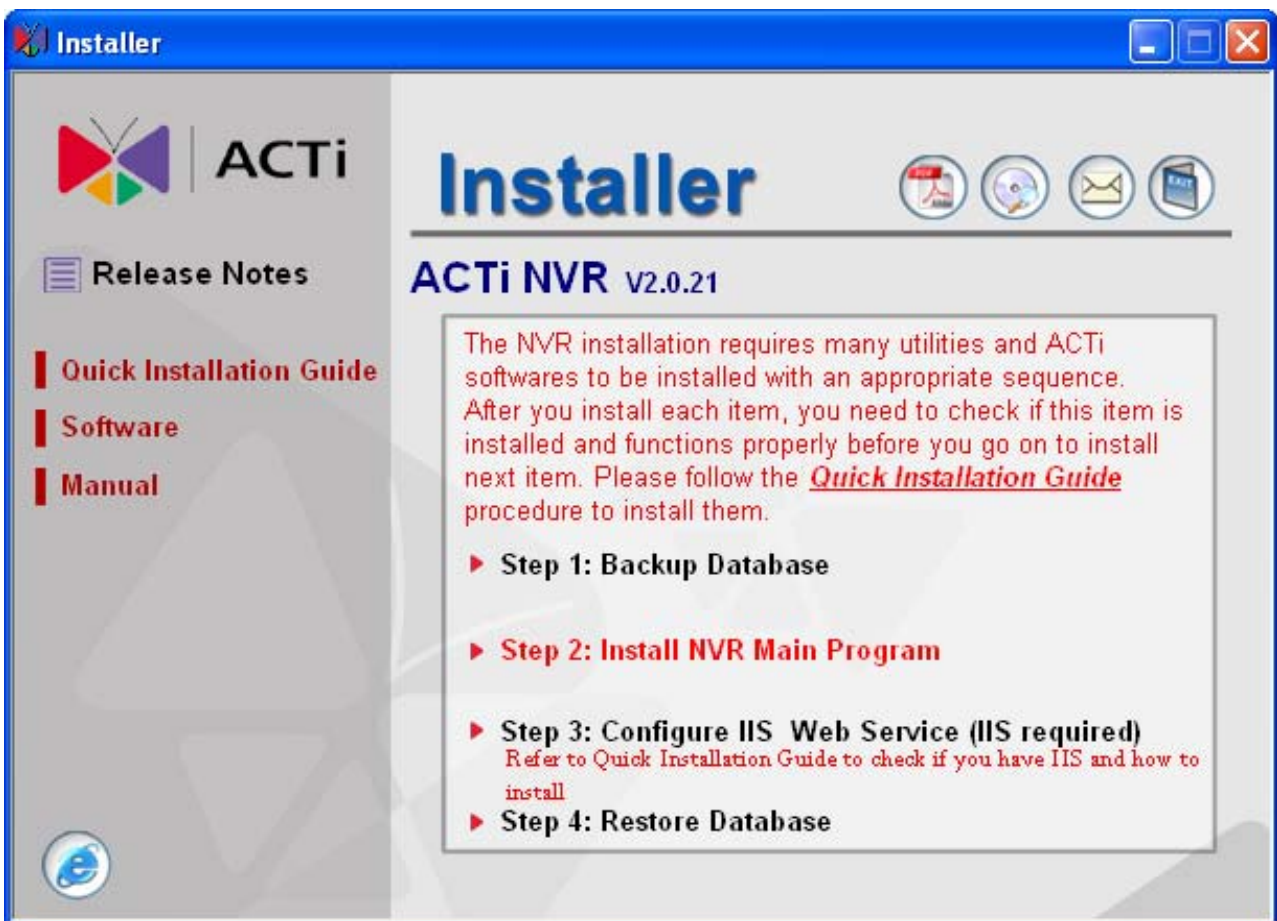


Figure 2-2 Step 1: Backup Database

2. Use Backup Database to backup database

For detailed operation, please refer to [Backup Wizard User manual](#).

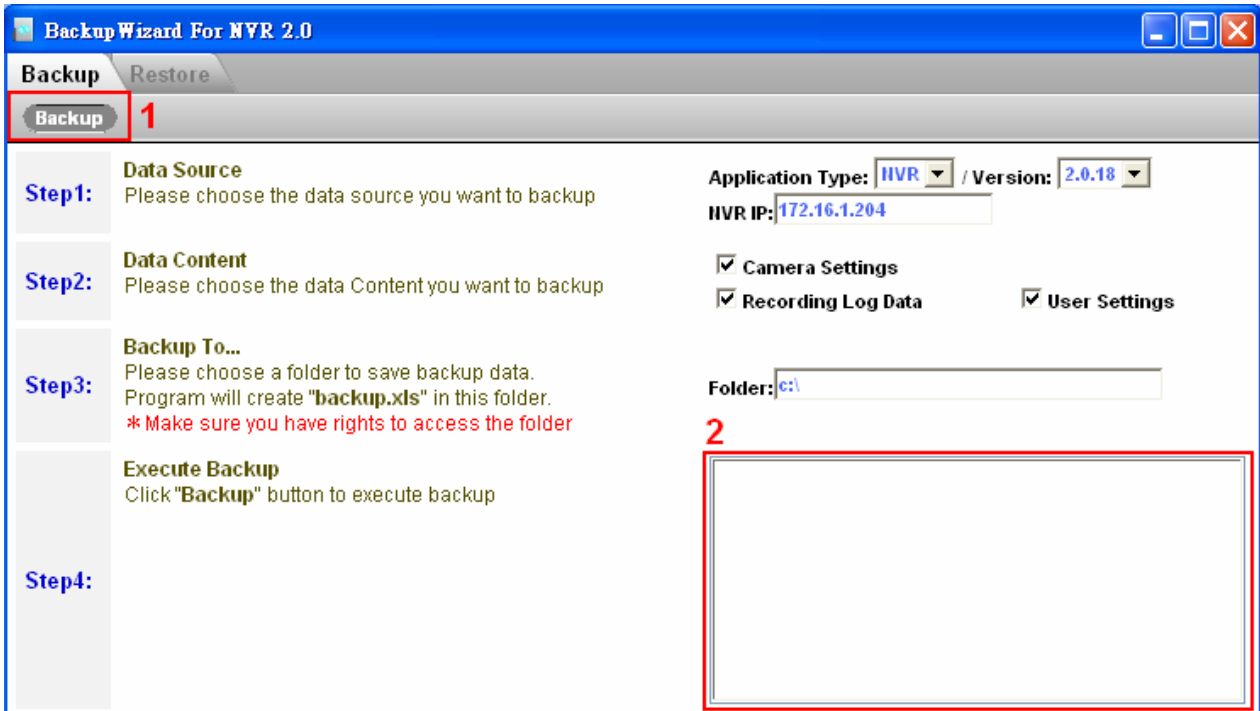


Figure 2-3 Backup database data from ACTi NVR Server

With Backup Wizard, you may type in the version number, NVR IP address, database table to backup, destination folder for the backup file.



TIP: Database data are backup to Excel file with **BACKUP.XLS** file name. This file is stored in destination folder specified in **Fol der** field. Default is: **C: \BACKUP.XLS**

Step 2. Install NVR Main Program

1. Click on [Step 2: Install NVR Main Program](#) link

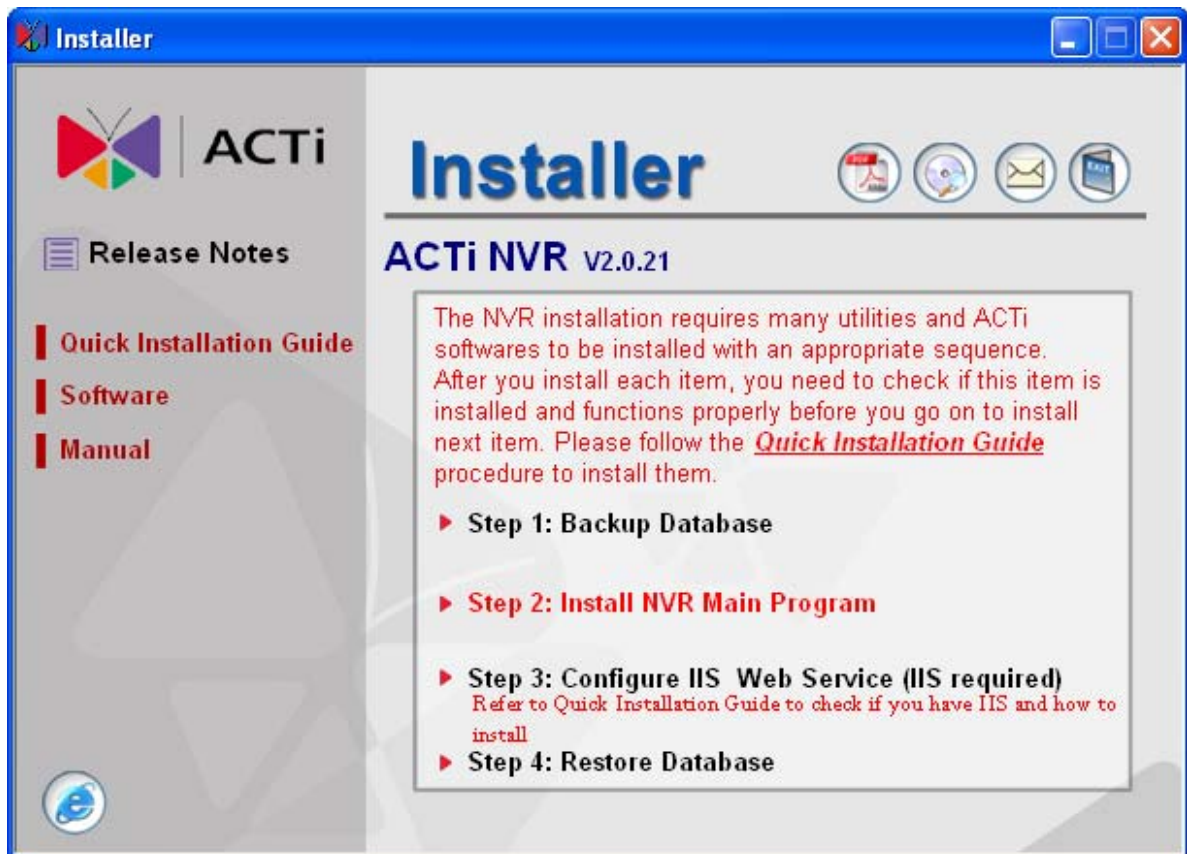


Figure 2-4 Step 2: Install NVR Main Program

2. Install Pre-requisite for ACTi NVR Server

Install prerequisites for ACTi NVR Server.

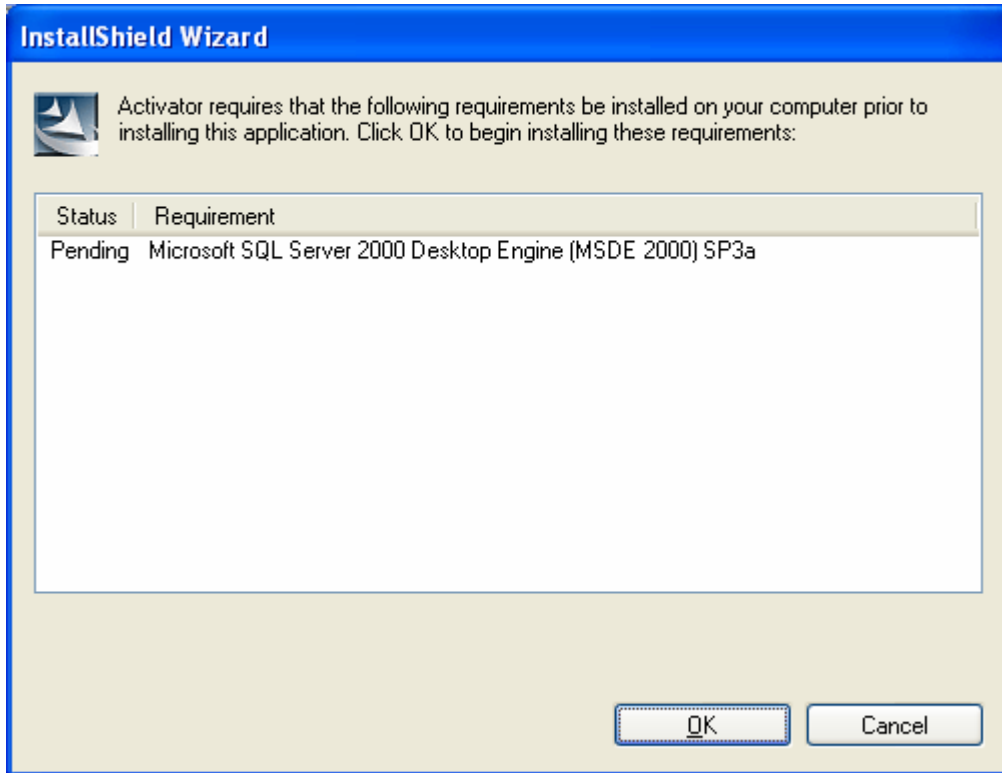


Figure 2-5 Display Prerequisites for ACTi NVR Server

1. Press OK to proceed. Start installing pre-requisites for ACTi NVR Server

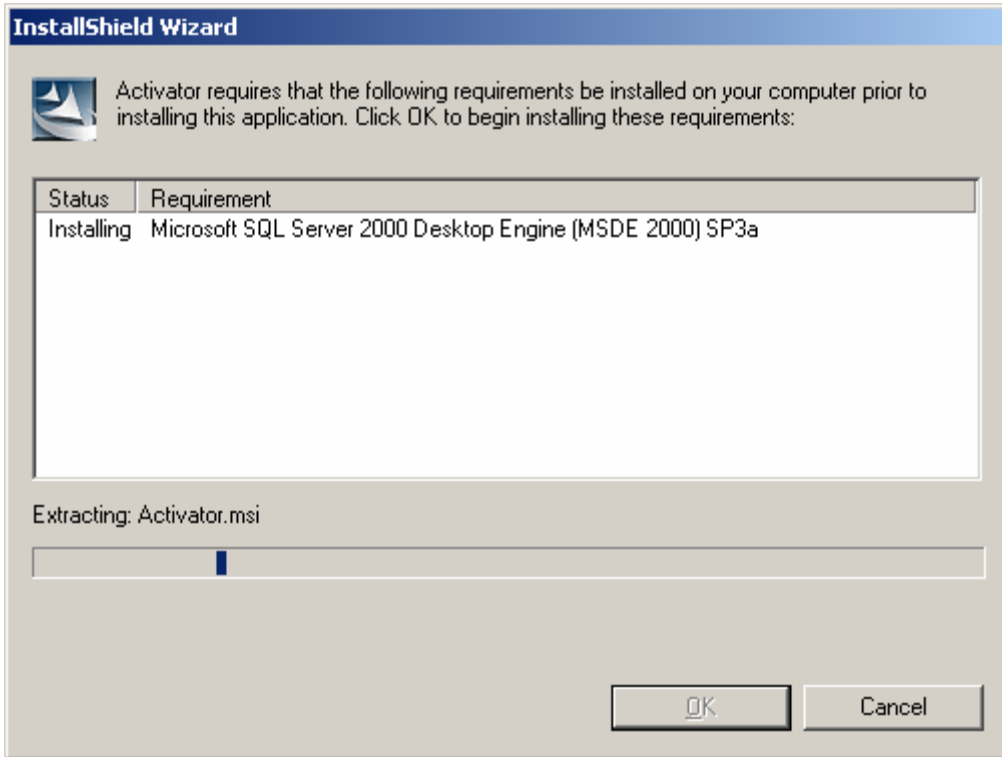


Figure 2-6 Installing Prerequisites for ACTi NVR Server

3. Install Database Engine

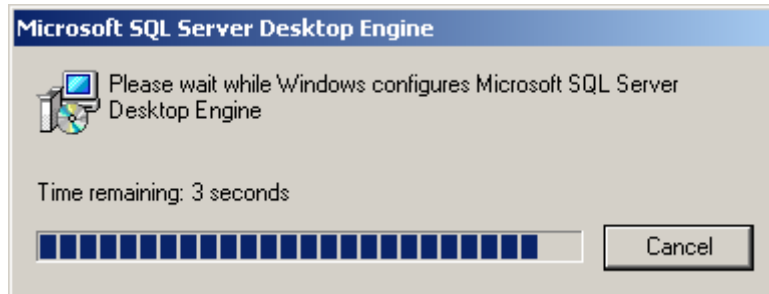


Figure 2-7 Installing Database Engine

1. The process will be executed automatically

4. Install NVR Main Program

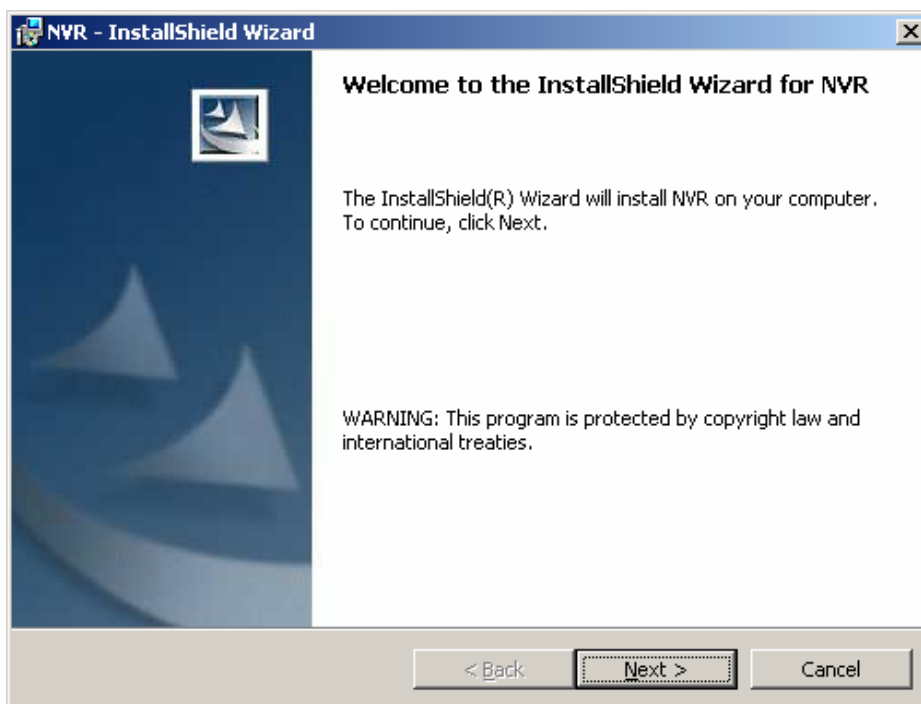


Figure 2-8 Installing ACTi NVR Main Program

1. Click Next button to proceed the installation

6. Default Installation Path: C:\Program Files\ACTi\NVR

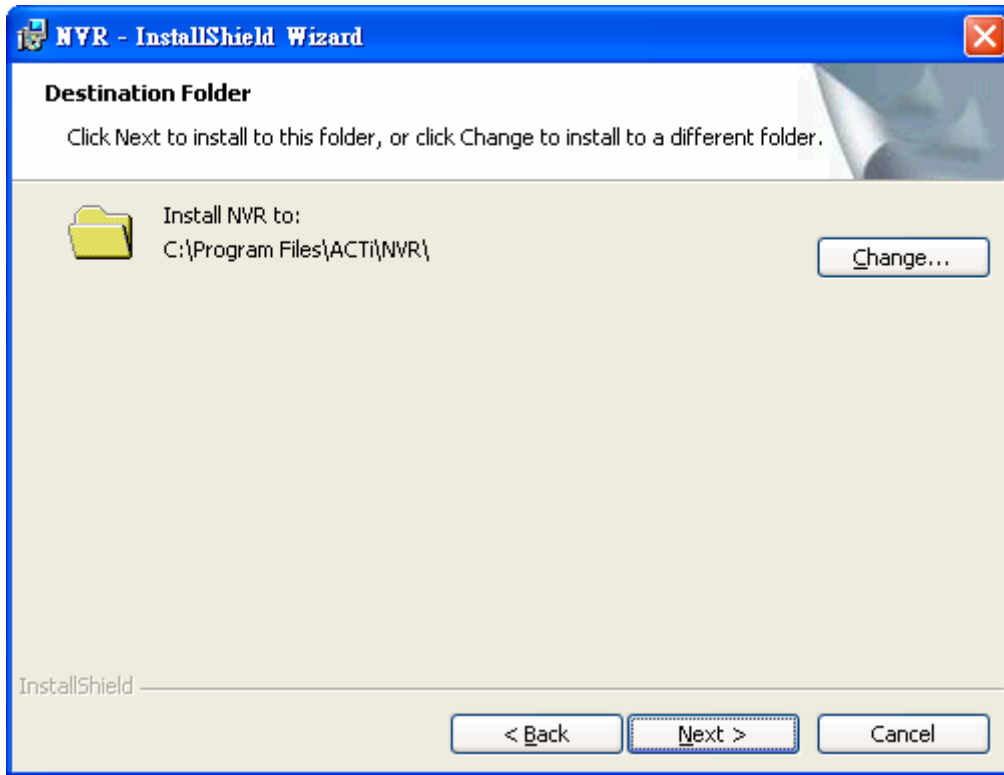


Figure 2-9 Default Installation Path: C:\Program Files\ACTi\NVR

1. Click **Next >** button to apply default path to install
2. Click **Change** button to select destination installation path



NOTE: Default Path C: \Program Files\ACTi \NVR is recommended..

7. Change Installation Path

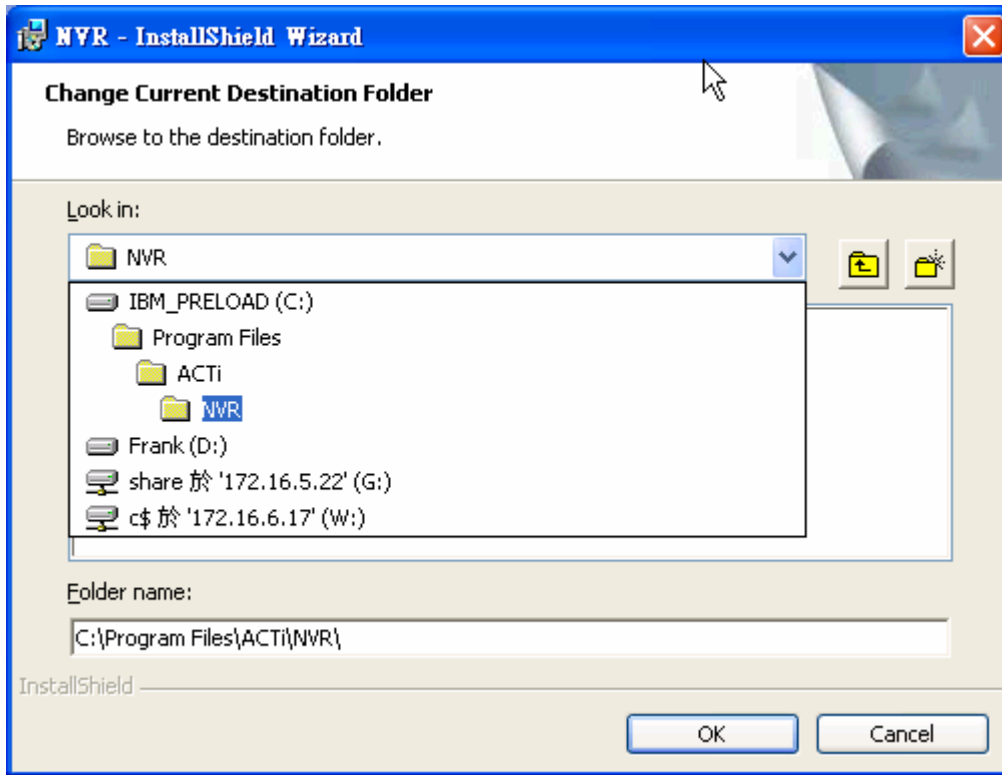


Figure 2-10 Change Installation Path

8. Connecting to Database and Importing Default Value to Database

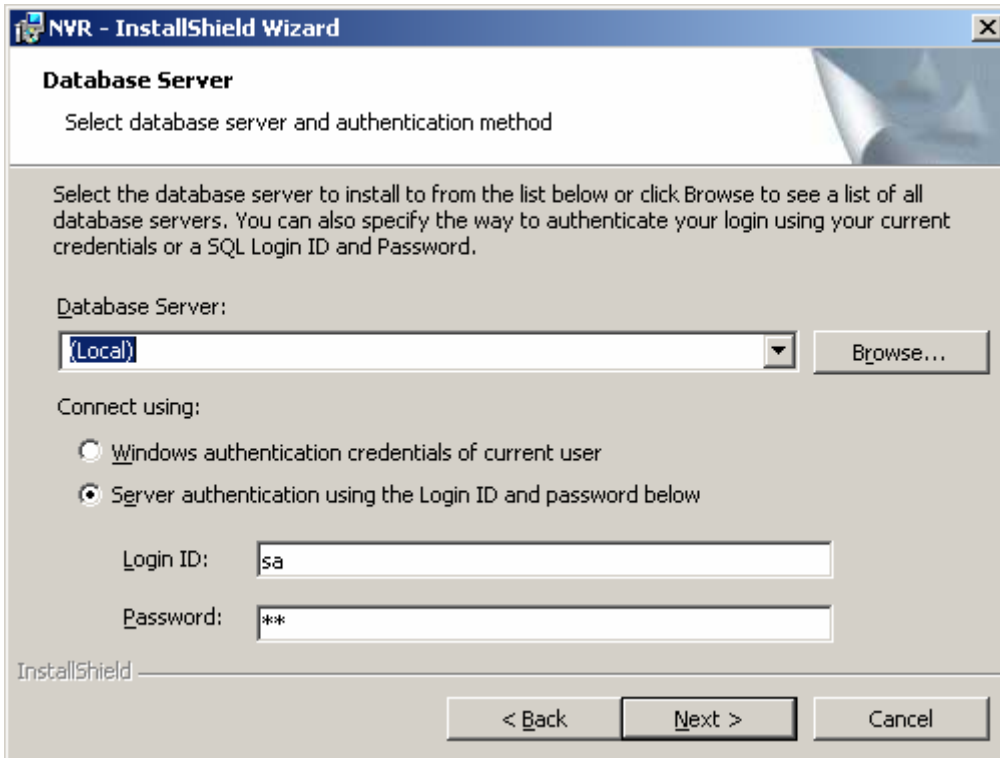


Figure 2-11 Connecting to Database and Importing Default Value to Database

1. Click Next button to proceed to default value importing. Please do not change default account / password.



IMPORTANT: Do not change the default account / password.

9. Install NVR Server Package

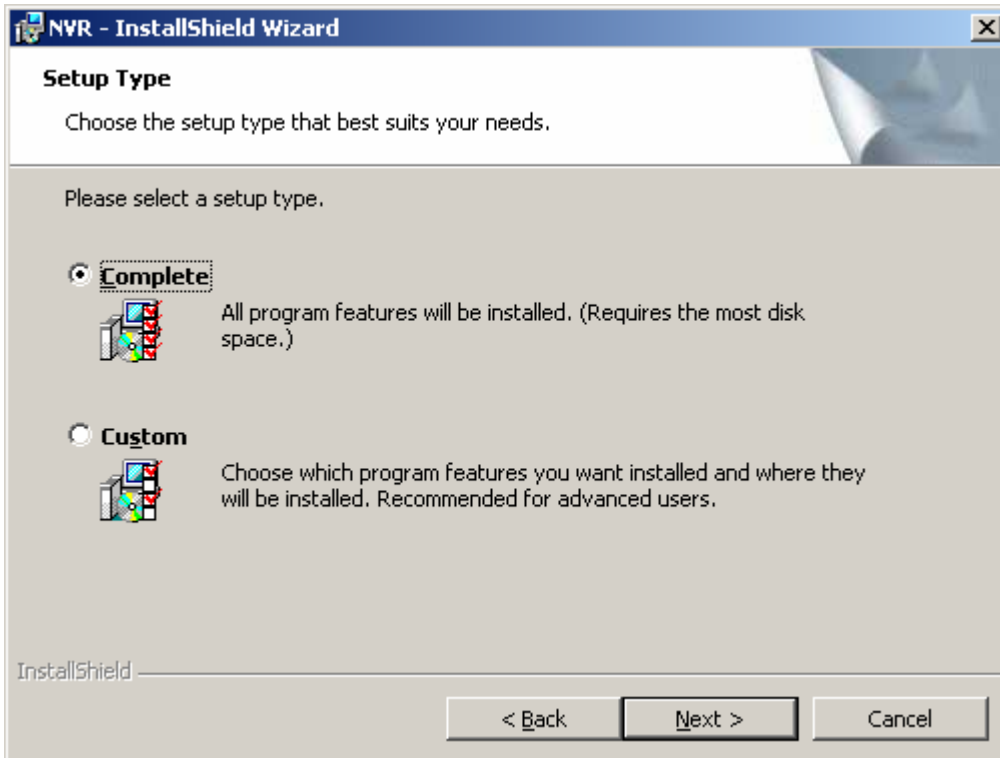


Figure 2-12 Select Complete option to install ACTi NVR Server

1. Select Complete and Click Next button to install ACTi NVR Server. ACTi NVR Server includes:
 1. Win32 Service: Recorder, Event Manager, Storage Manager and Streaming Engine
 2. NVR Workstation: Active Monitor, Active Player, Active Map and Active Setup
 3. NVR Web Client: Web Client programs, Web Server programs



NOTE: Select Complete to install ACTi NVR Server. Select Custom to install ACTi NVR Workstation.



IMPORTANT: Please refer to Web Server (IIS) Configuration before you run NVR Web Client

10. NVR Server Installation

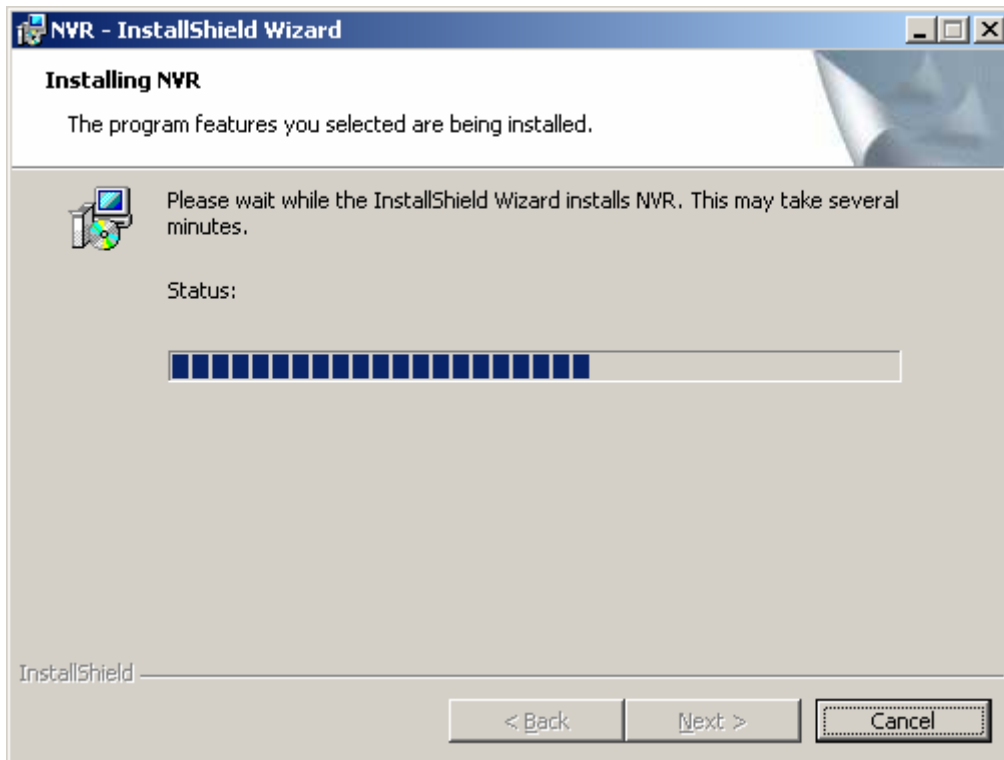


Figure 2-13 ACTi NVR Server Installation

11. NVR Server Installation Completed

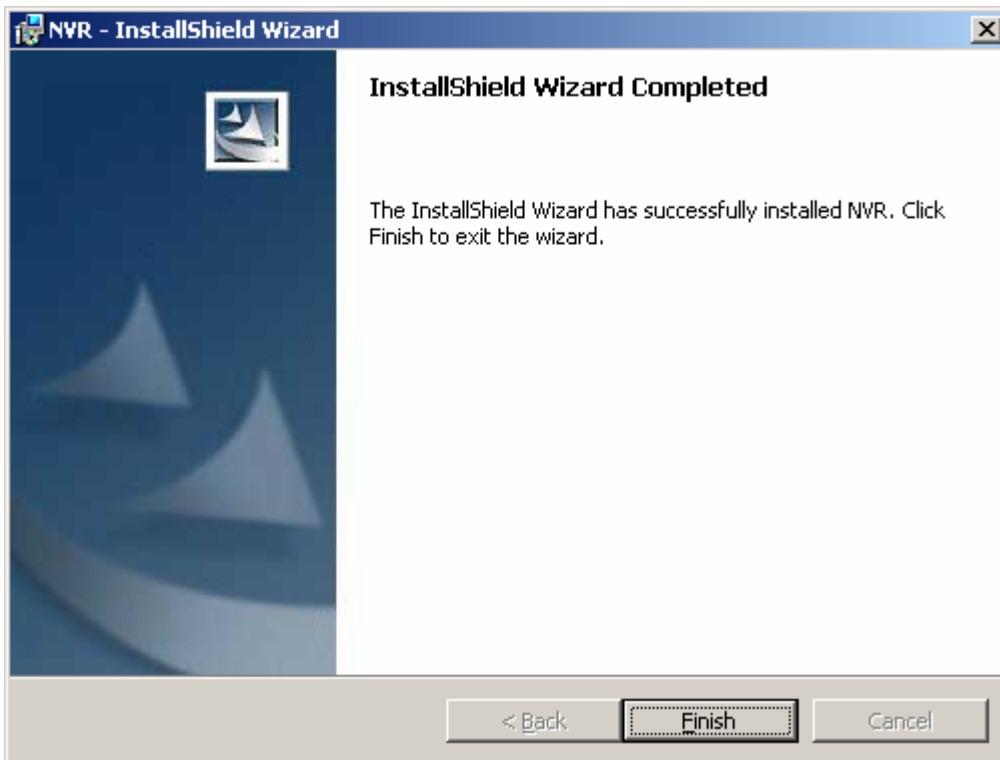


Figure 2-14 ACTi NVR Server Installation Complete

1. Click Finish button to complete NVR Server Installation

12. Restart System

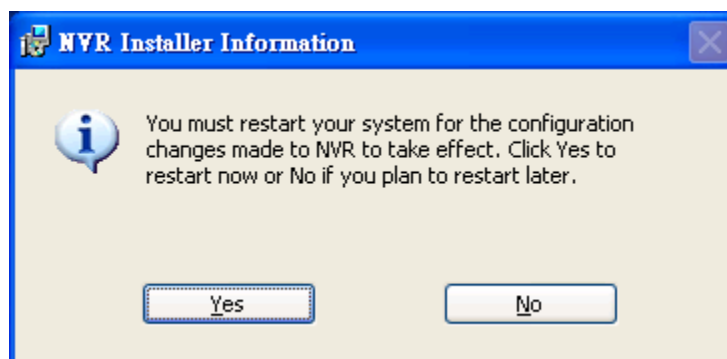


Figure 2-15 Click Yes button to re-start the system

Step 3. Configure IIS Web Service (IIS Required)

ACTi NVR Server can only run under Microsoft IIS Server (Internet Information Server) as the Web Server.

If you use Windows XP or Windows 2003 Standard Edition, please install IIS first.



Figure 2-16 Configure IIS Web Service

Bundled with IIS Server

Name	Bundled with IIS Server?
Windows XP	NO
Windows 2003 Standard Edition	NO
Windows 2003 Professional Edition	Yes
Windows 2003 Enterprise Edition	Yes
Windows Storage Server 2003	Yes

1. Check IIS Services

Please follow the procedure below to Check IIS.

1. Please go to “Control Panel→Administrative tool→Services”.
2. You can see the “Service” windows pop-out as below; please check if the “IIS Admin Service” is in the list.

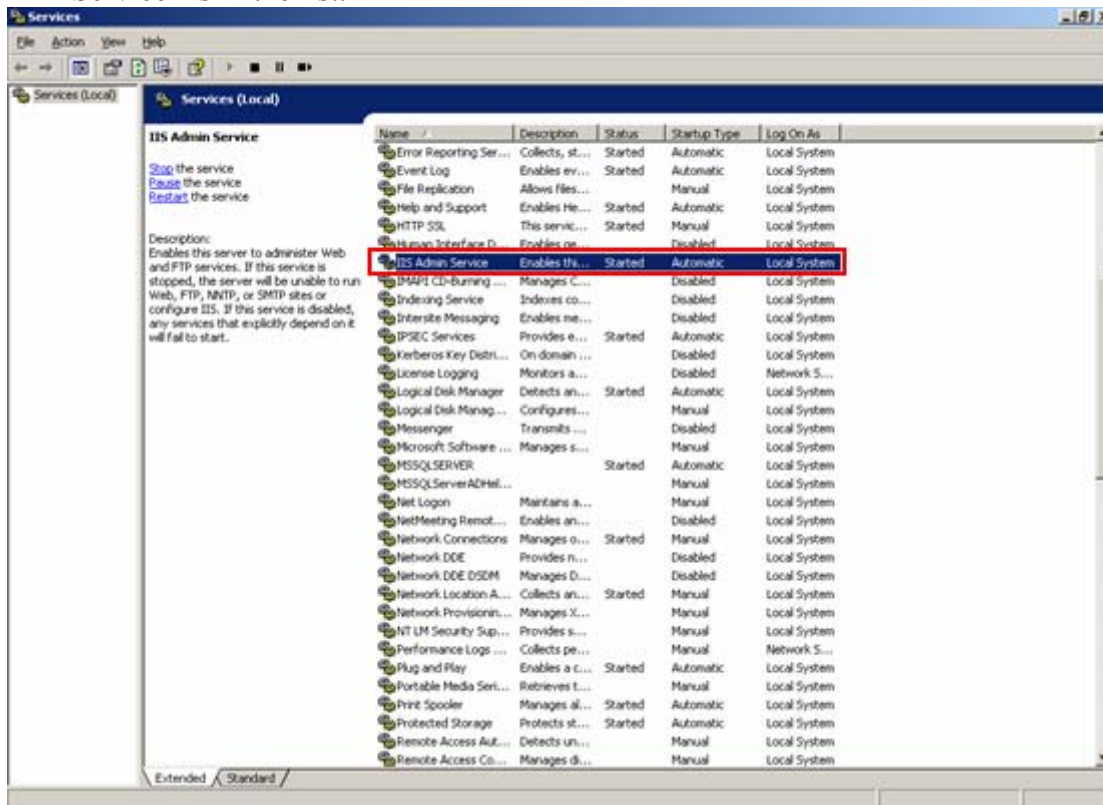


Figure 2-17 Configure IIS Web Service

3. If yes, the IIS service is installed and please proceed to Step 1: Backup Database.
4. If NOT, the IIS service is NOT installed. Please go to Chapter 4-2 for how to install the IIS service.

2. Install IIS under Windows XP

Step 1: Click **Start** -> **Control Panel** -> **Add or Remove Program**

Step 2: Click **Add/Remove Windows Components**

Step 3: Click **Internet Information services (IIS)**

Step 4: Click **Next** to install IIS

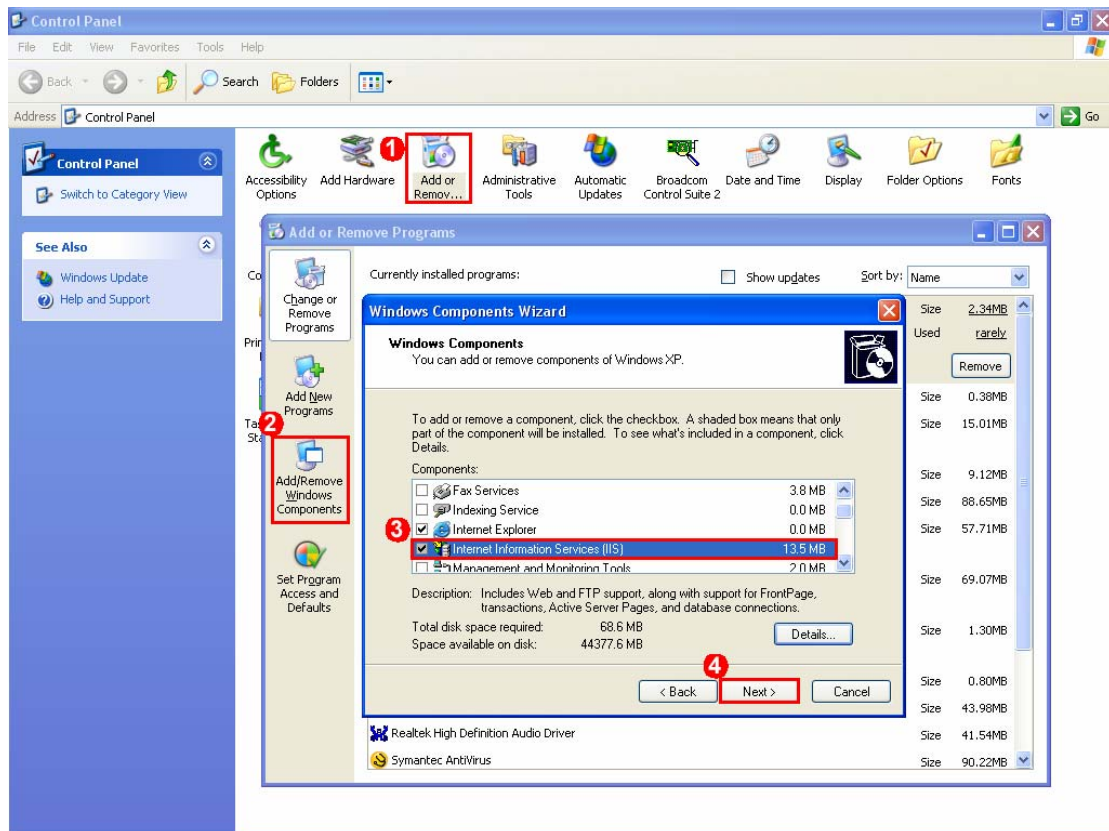


Figure 2-18 Select Start -> Control Panel -> Add or Remove Program

Step 5: Locate IIS Package

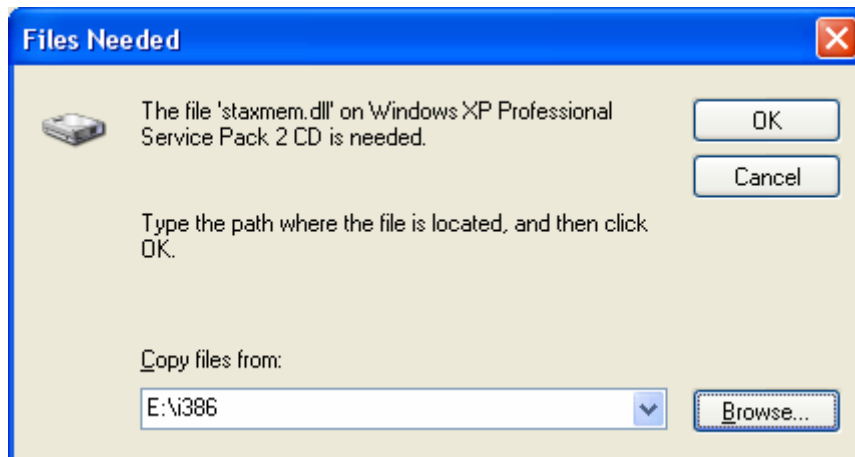



Figure 2-19 Locate IIS Package location

 **NOTE:** If IIS Package cannot be found in the system, then you have to insert Windows XP CD-ROM into the CD Drive.

Step 6: Install IIS Package

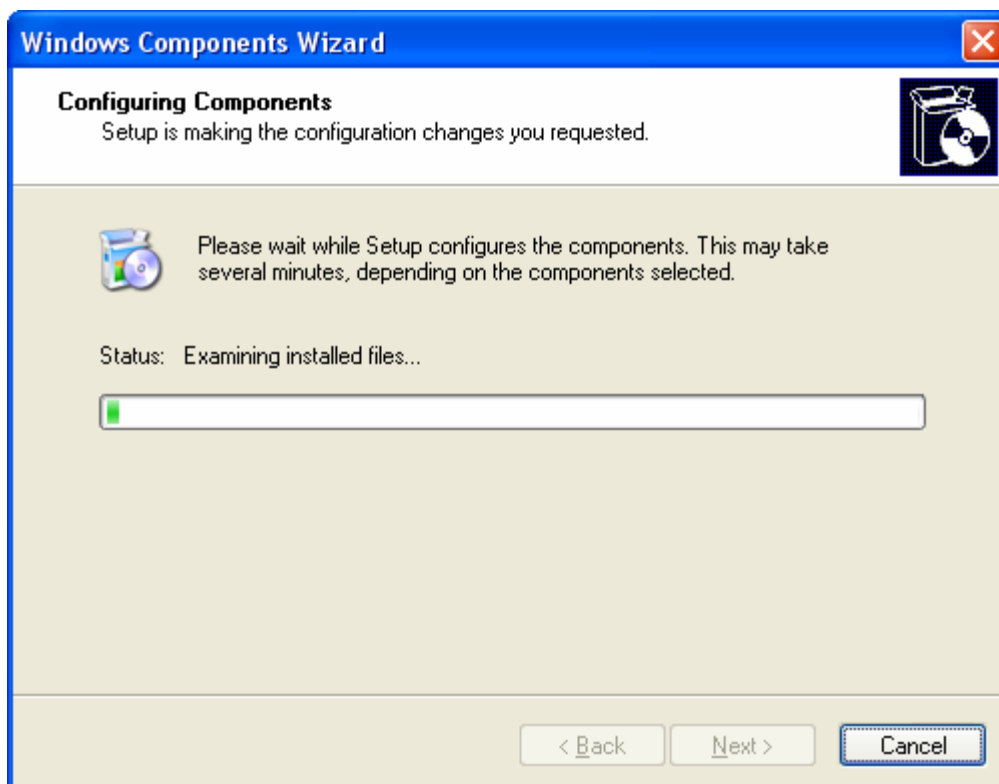


Figure 2-20 Installing IIS Service

Step 7: Click **Finish** to complete installation.



Figure 2-21 Click Finish to complete installation

Step 2: Click Add/Remove Windows Components

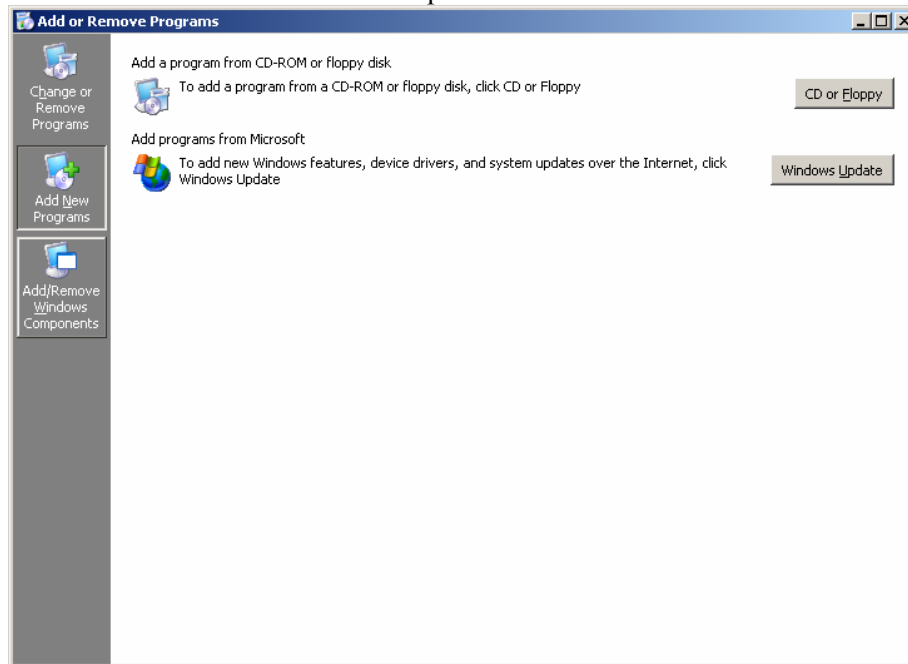


Figure 2-22 Select Add/Remove Windows Components

Step 3: Select Application Server

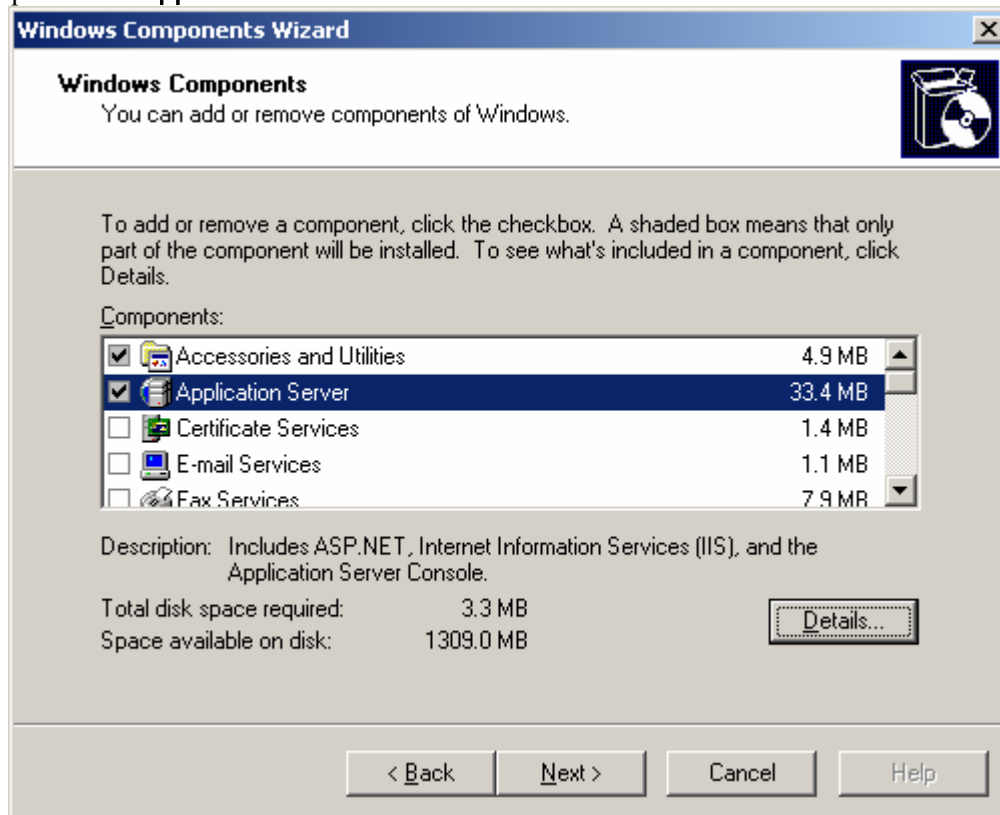


Figure 2-23 Select Application Server

Step 4: Select **Internet Information Services (IIS)**

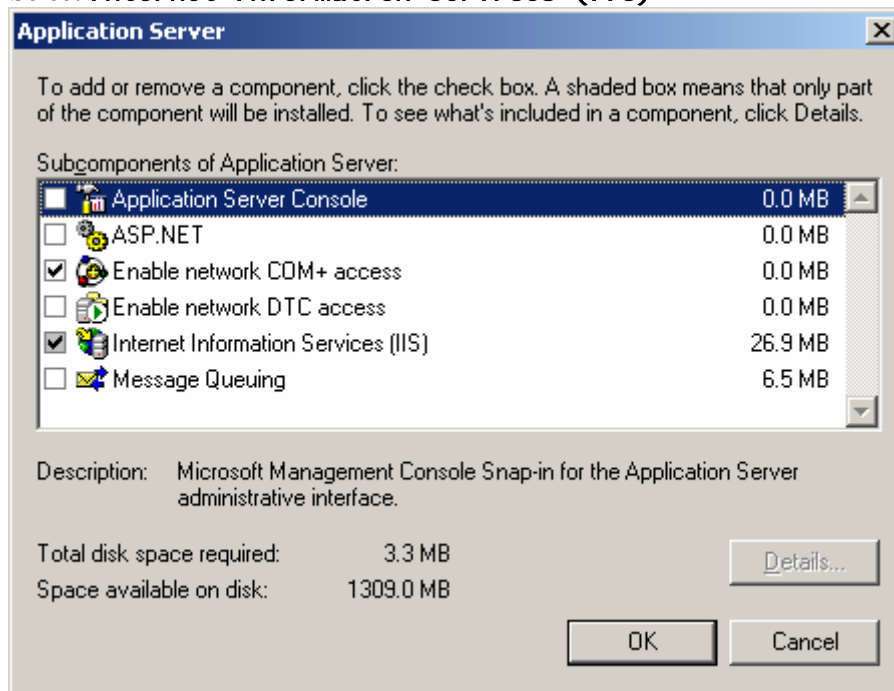


Figure 2-24 Select Internet Information Services (IIS)

Step 5: Click **OK** to install IIS Server

3. Install IIS under Windows 2003 Standard Edition

Step 1: Click **Start** -> **Control Panel** -> **Add or Remove Program**

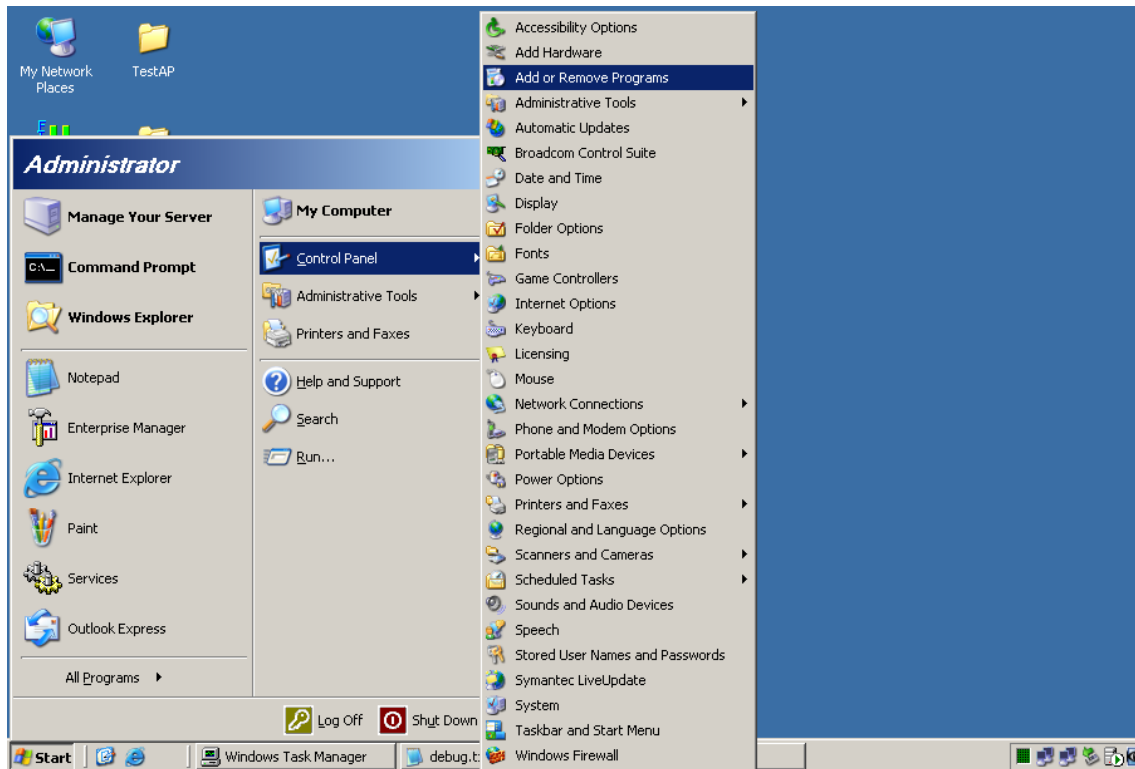


Figure 2-25 Select Start -> Control Panel -> Add or Remove Program

Step 2: Click Add/Remove Windows Components

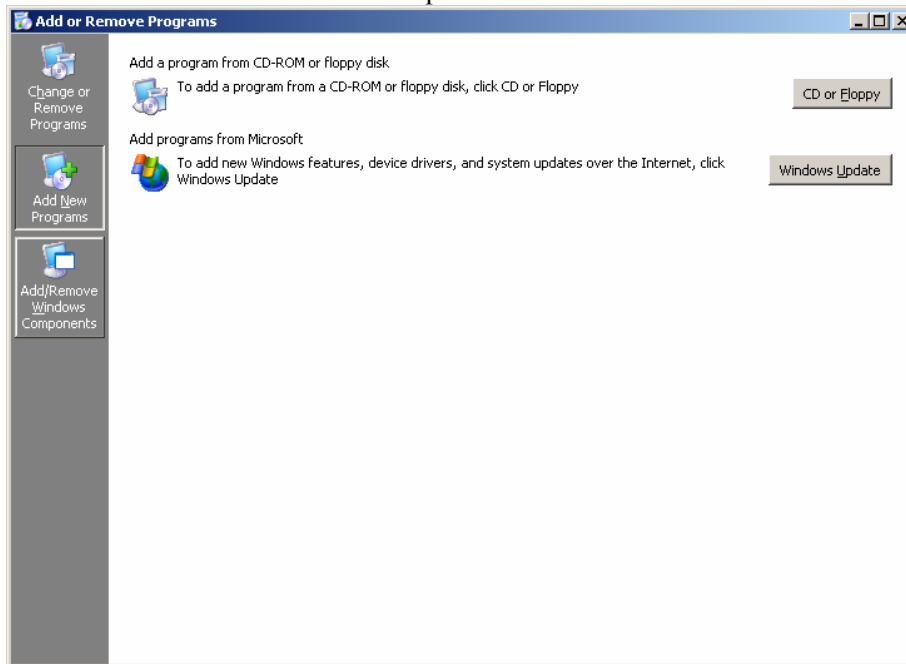


Figure 2-26 Select Add/Remove Windows Components

Step 3: Select Application Server

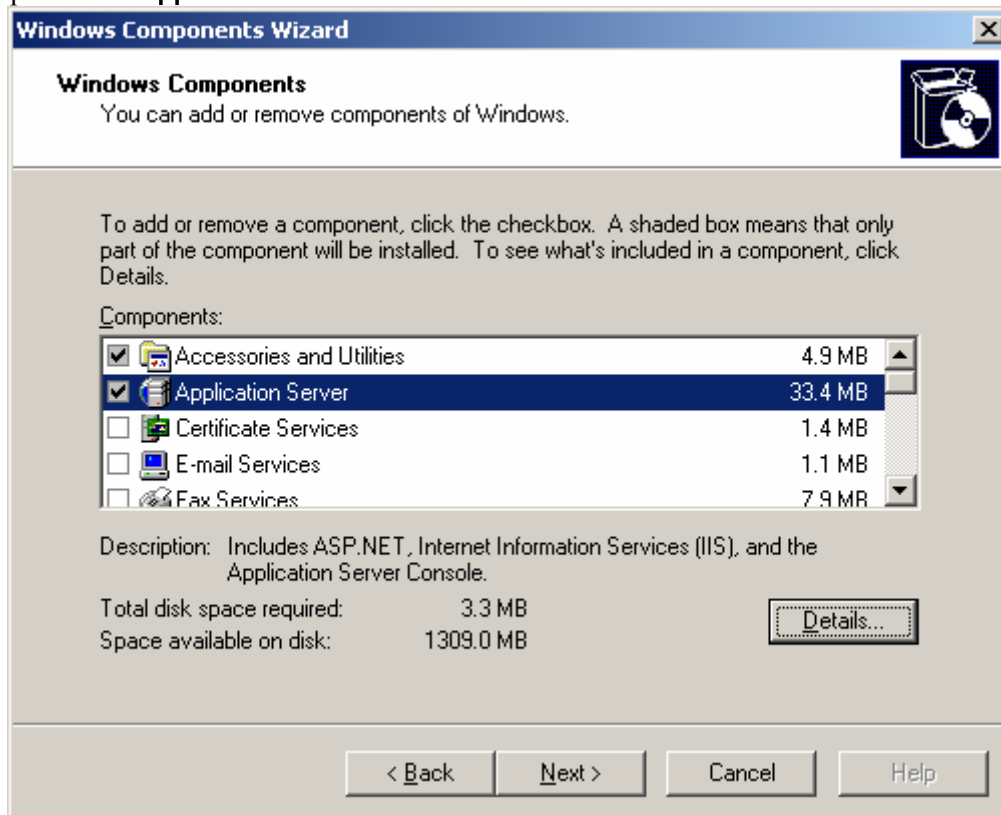


Figure 2-27 Select Application Server

Step 4: Select **Internet Information Services (IIS)**

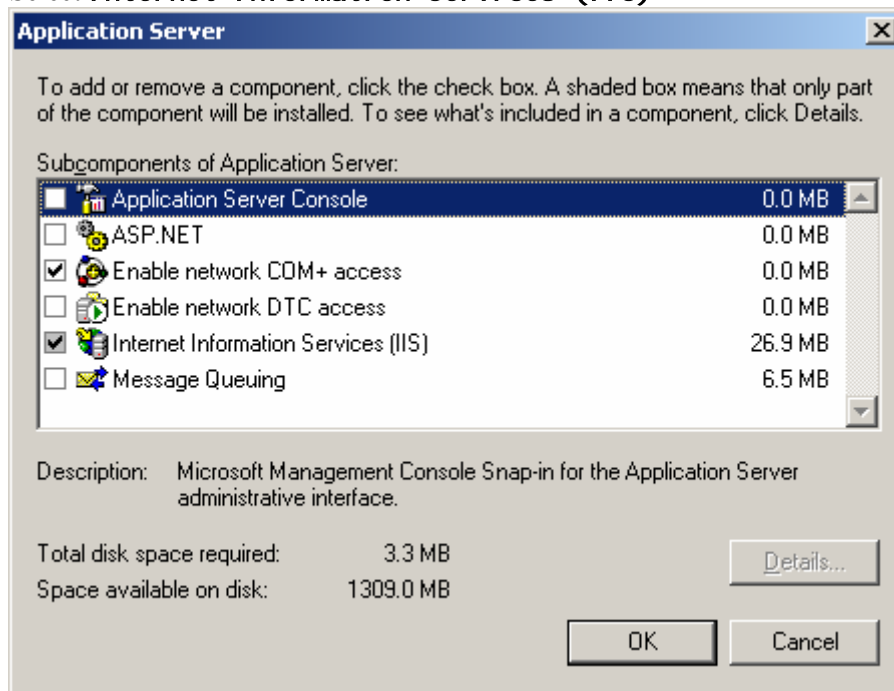


Figure 2-28 Select Internet Information Services (IIS)

Step 5: Click **OK** to install IIS Server

4. Configure IIS

Step 1: Click **Start** -> **Control Panel** -> **Administrative Tools**

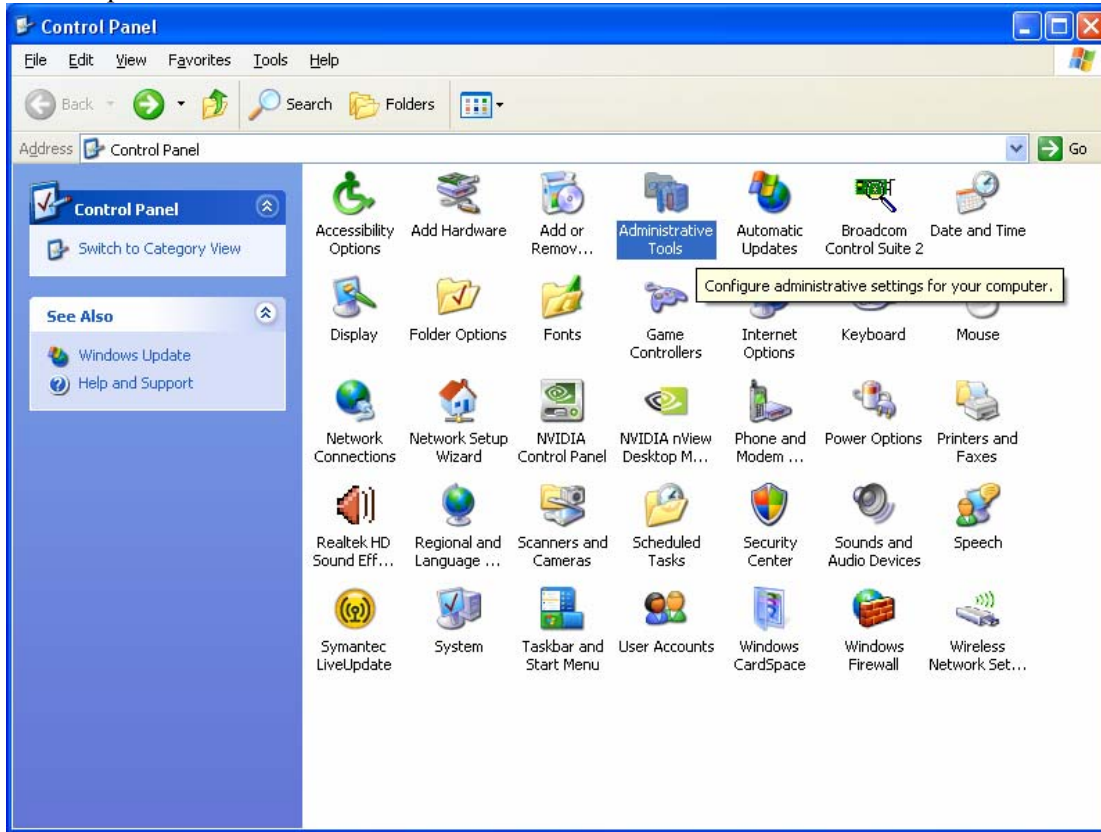


Figure 2-29 Select Administrative Tools

Step 2: Click Internet Information Services (IIS)

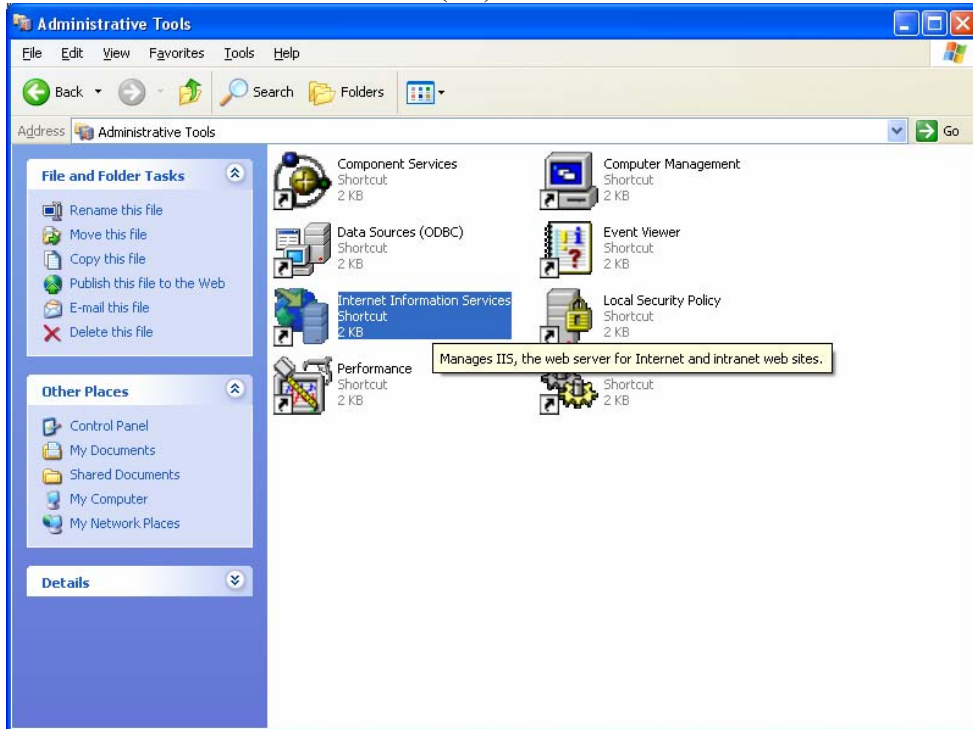


Figure 2-30 Select Internet Information Services (IIS)

Step 3: Select "Local Computer" then select "Web Sites" then Right Click on Default Web Site icon and select Properties

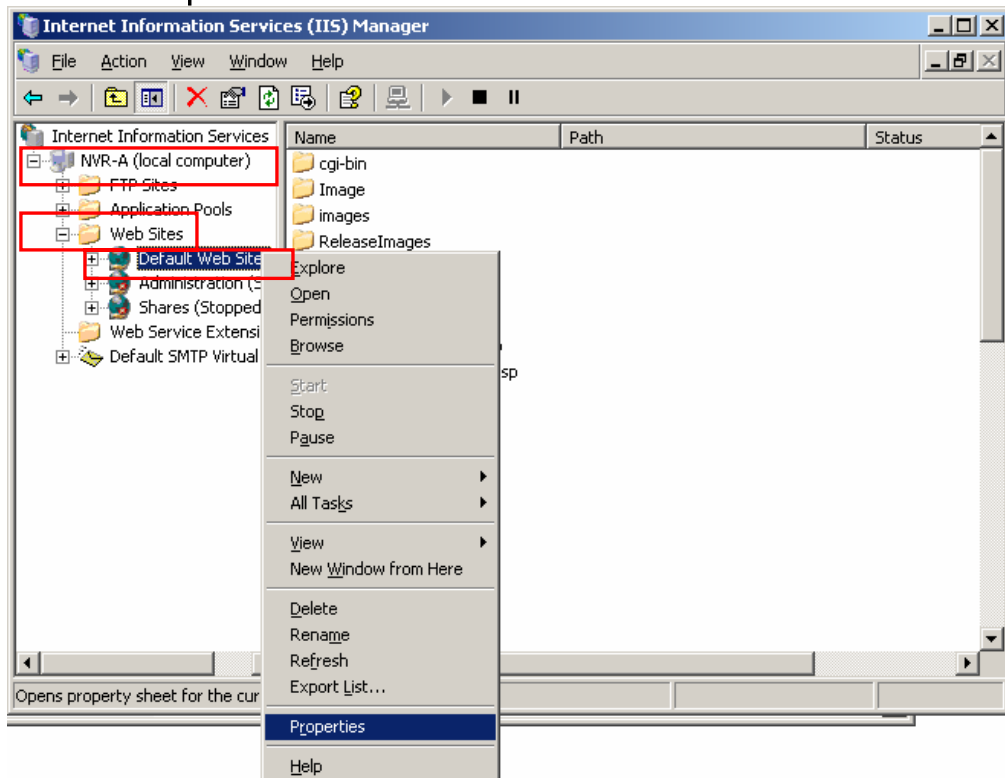


Figure 2-31 Select IIS Properties

Step 4: Click **Home Directory** tab and click “A directory

Step 5: Browse or input **C:\Program Files\NVR\IPControlCenter** in the **Local Path** field.

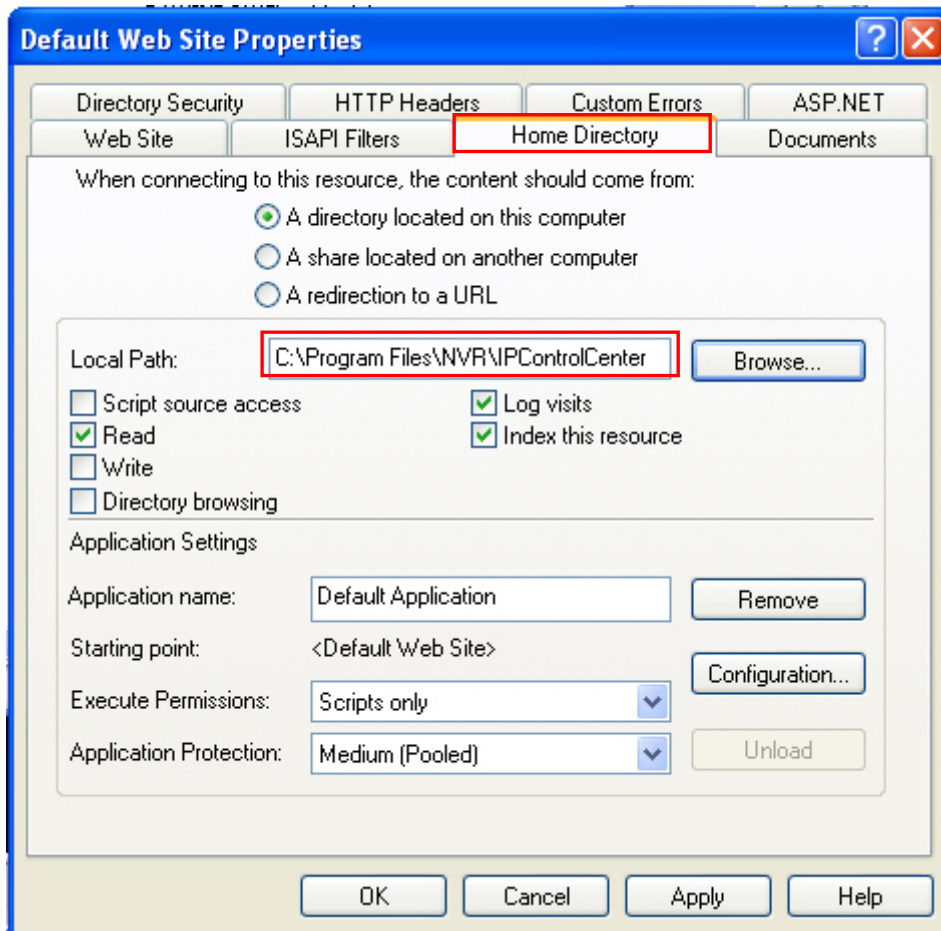


Figure 2-32 Configure IIS Path, Default: C:\Program Files\NVR\IPControlCenter

Step 6: Click **Documents** tab

Step 7: Click **Add** button to add two default content pages: **Default.htm** and **Index.asp**

Step 8: Move “**Default.htm**” to the top and “**Index.asp**” to the second top with **Move Up** button

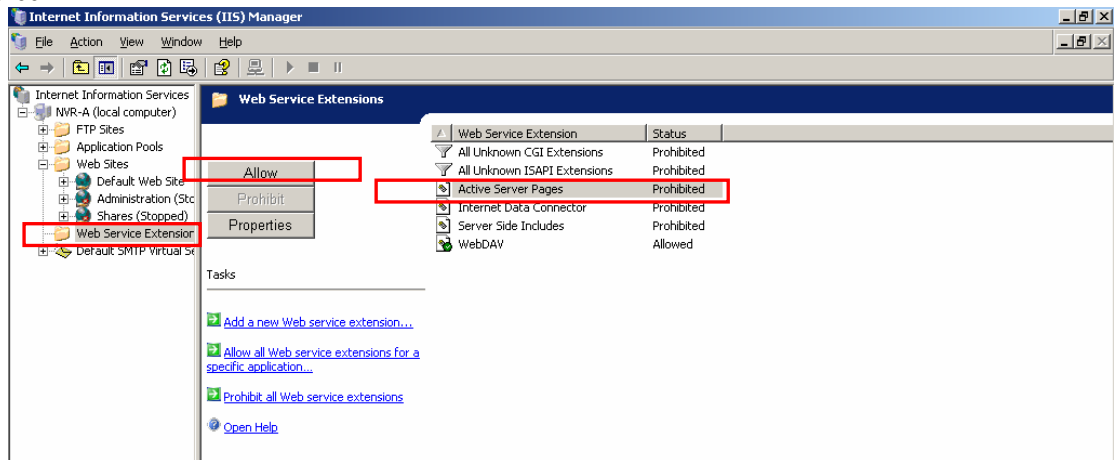
Step 9: Click **Enable Default Document** to enable the functionality

Step 10: Click **OK** button to finish configuration

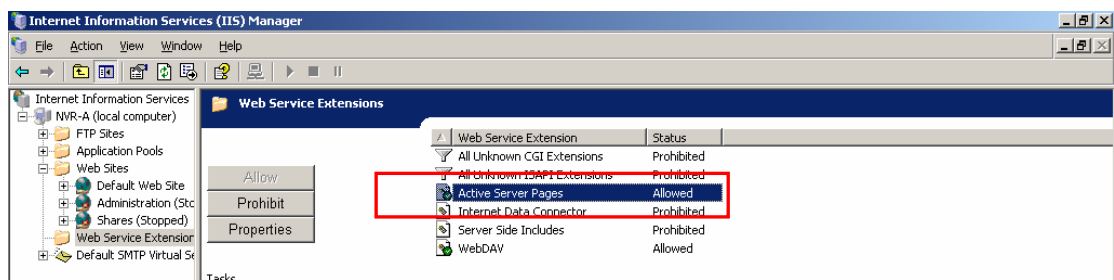


Figure 2-33 Configure IIS Documents

Step 11: (Windows Server 2003 only) Click the “Web Service Extension”, and windows below shows on screen



Step 12: (Windows Server 2003 only) Click the “Active Server Pages” then click the “Allow” button. When the “Active Server Pages” is allowed, the setting is completed.



Step 4. Use Backup Database to restore database back to NVR Server

For detailed operation, please refer to [Backup Wizard User manual](#).

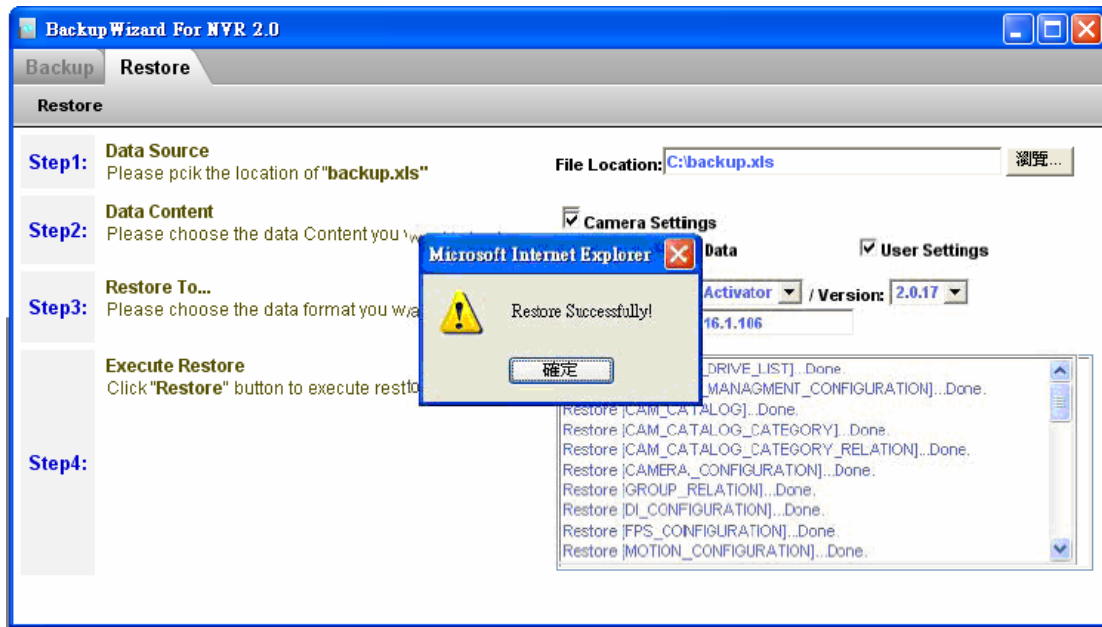


Figure 2-34 Restore data from ACTi NVR Server

With Backup Wizard, you may select or type in the backup excel file (default: **Backup.xls**) then click **Restore** button to restore data back to ACTi NVR Server.



TIP: Default is: C: \BACKUP. XLS

Install NVR Workstation

To install ACTi NVR Workstation, please insert the ACTi NVR Server CD-ROM; the system will prompt up with an auto-run program.

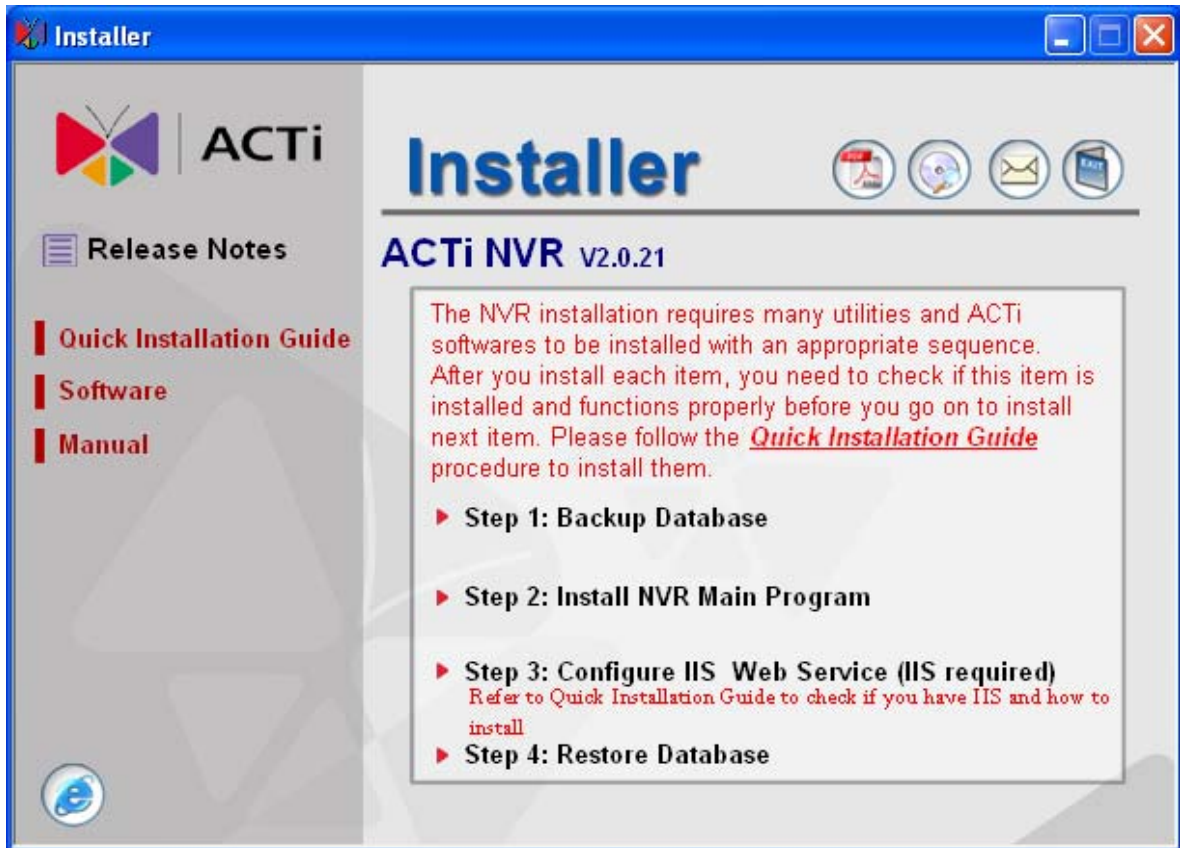


Figure 2-35 ACTi NVR Server Auto-Run Program

Step 1. Install NVR Main Program

1. Click on [Step 2: Install NVR Main Program](#) link

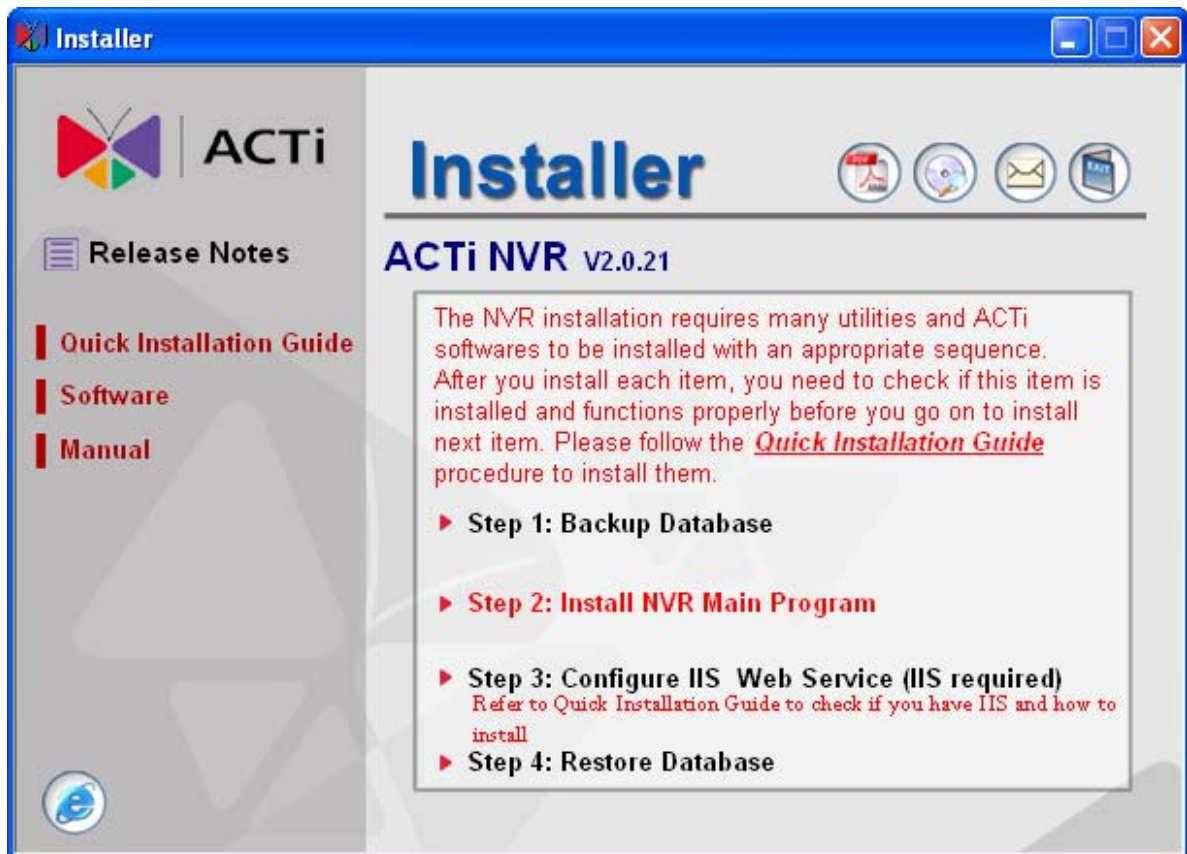


Figure 2-36 Step 2: Install NVR Main Program

2. Install NVR Main Program

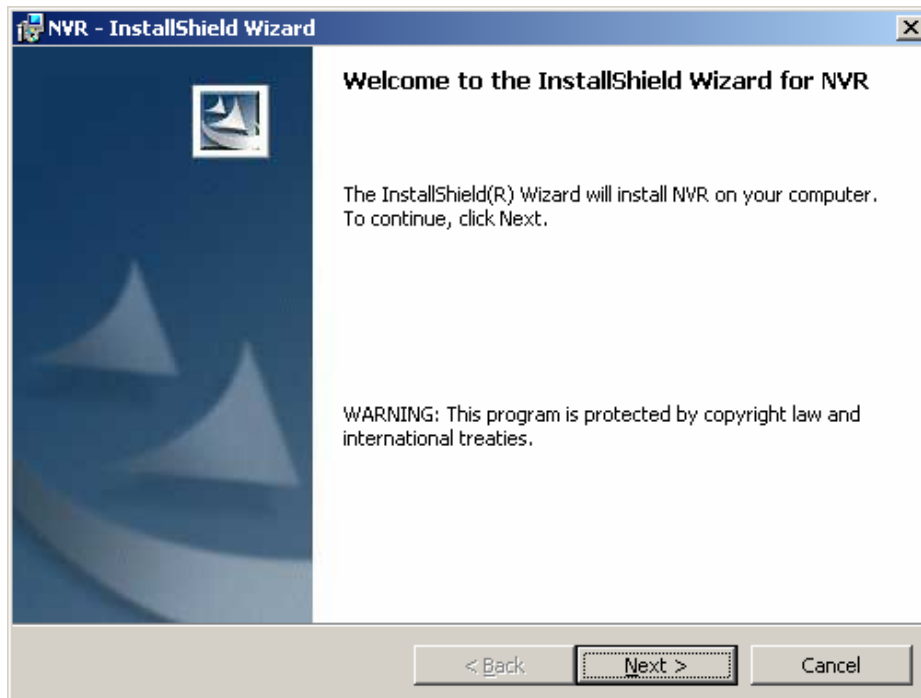


Figure 2-37 Installing ACTi NVR Main Program to install ACTi NVR Workstation

1. Click Next button to proceed the installation

3. Default Installation Path: C:\Program Files\ACTi\NVR

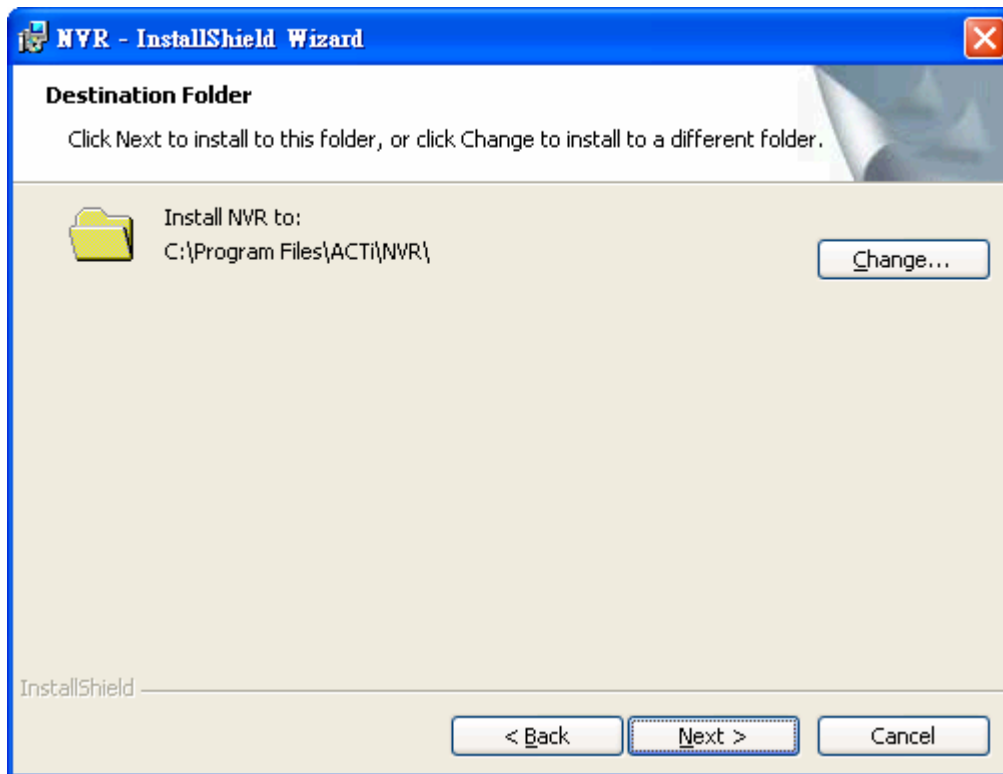


Figure 2-38 Default Installation Path: C:\Program Files\ACTi\NVR

3. Click **Next >** button to apply default path to install
4. Click **Change** button to select destination installation path



NOTE: Default Path C:\Program Files\ACTi\NVR are recommended..

4. Change Installation Path

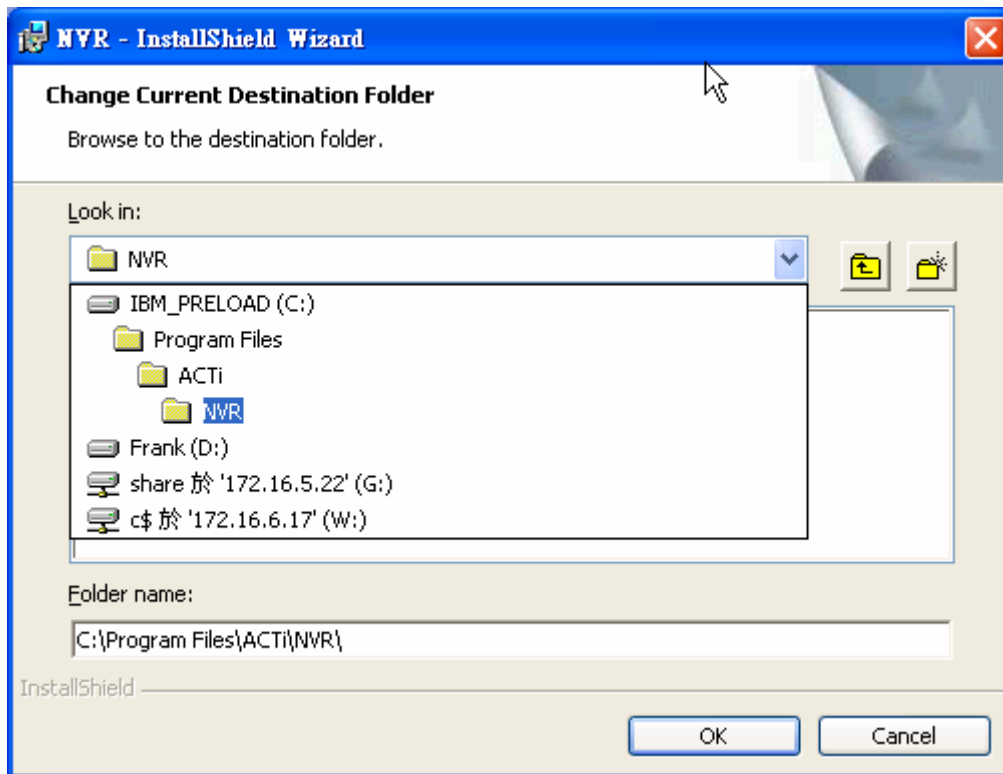


Figure 2-39 Change Installation Path

5. Connecting to Database and Import Default Value to Database

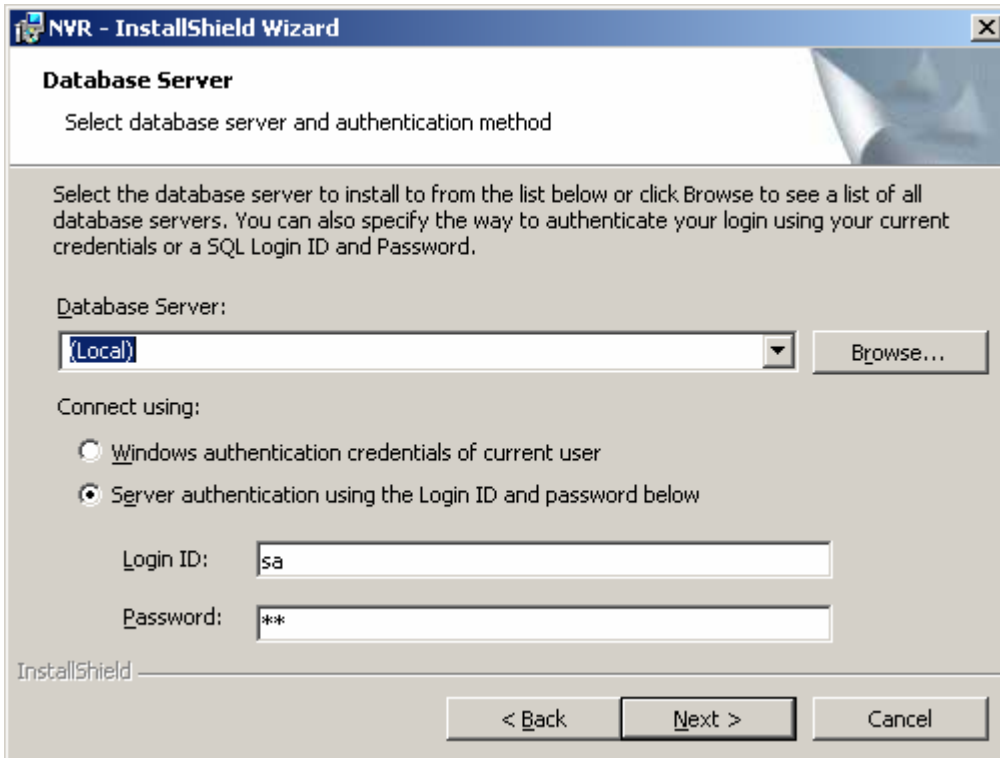


Figure 2-40 Connecting to Database and Importing Default Value to Database

1. Click Next button to proceed to default value importing. Please do not change default account / password.



IMPORTANT: Do not change the default account / password.



IMPORTANT: When installing NVR Workstation, database and related packages will not be installed.

6. Install NVR Server Package

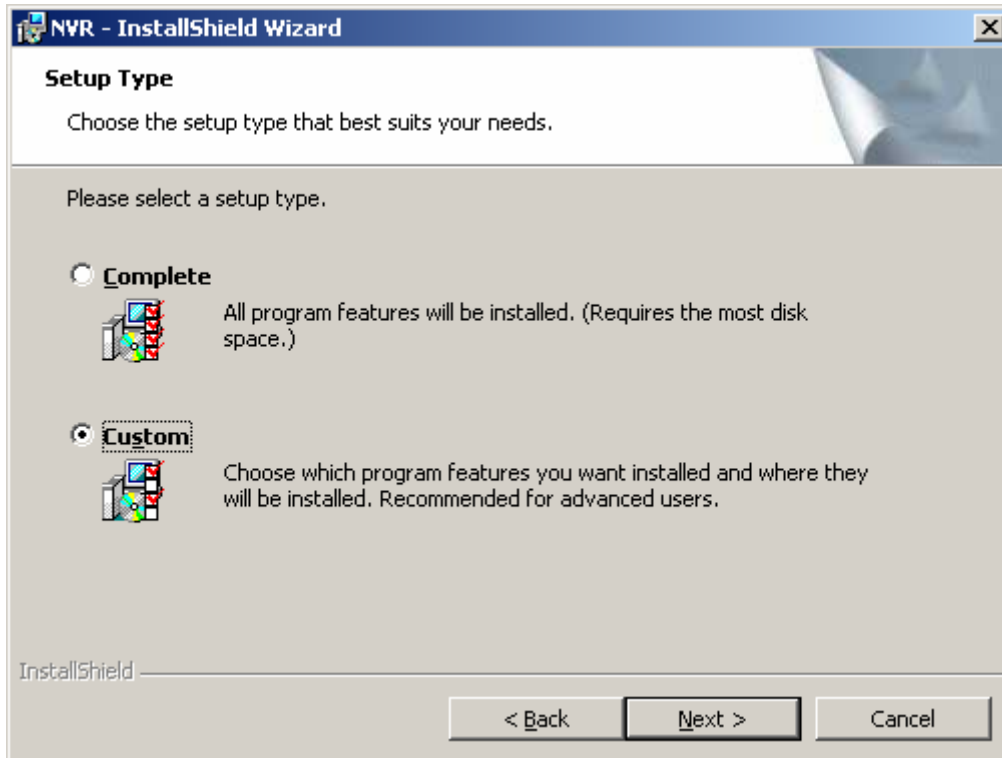


Figure 2-41 Select Custom option to install ACTi NVR Workstation

1. Select Custom and Click Next button to install ACTi NVR Workstation. ACTi NVR Workstation include:
 1. NVR Workstation: Active Monitor, Active Player, Active Map and Active Setup



NOTE: Select Complete to install ACTi NVR Server. Select Custom to install ACTi NVR Workstation.

7. Disable NVR Server Installation

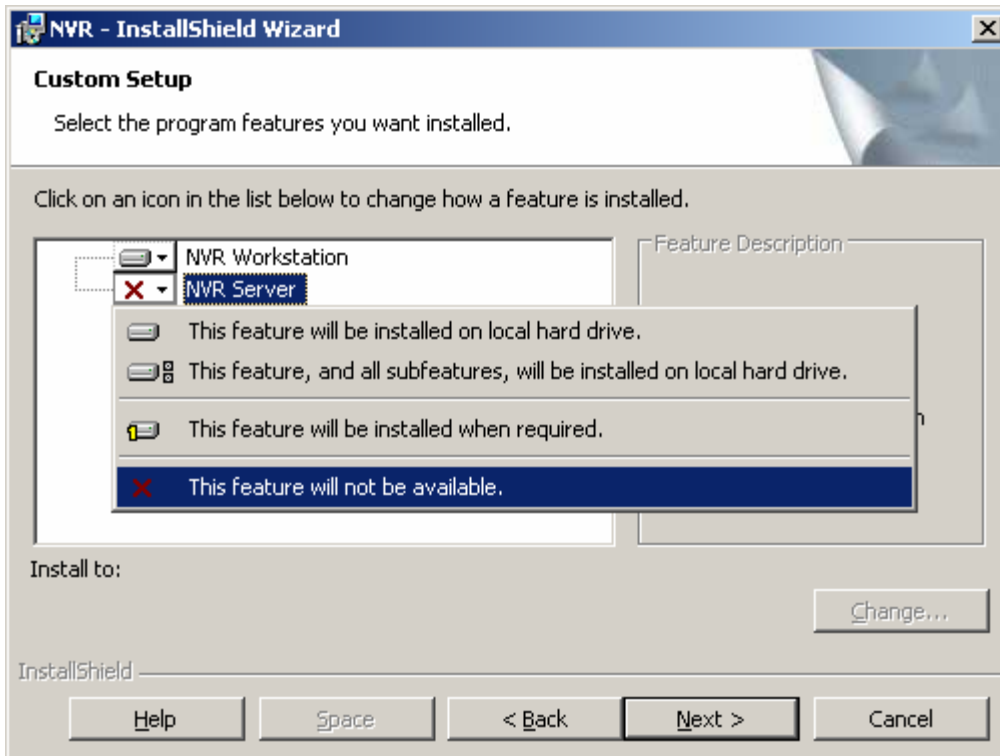


Figure 2-42 Disable NVR Server Option

1. Disable **NVR Server** and click **Next >** button to continue installation.



IMPORTANT: Disable NVR Server option, and install NVR Workstation only.

8. Install NVR Workstation Complete

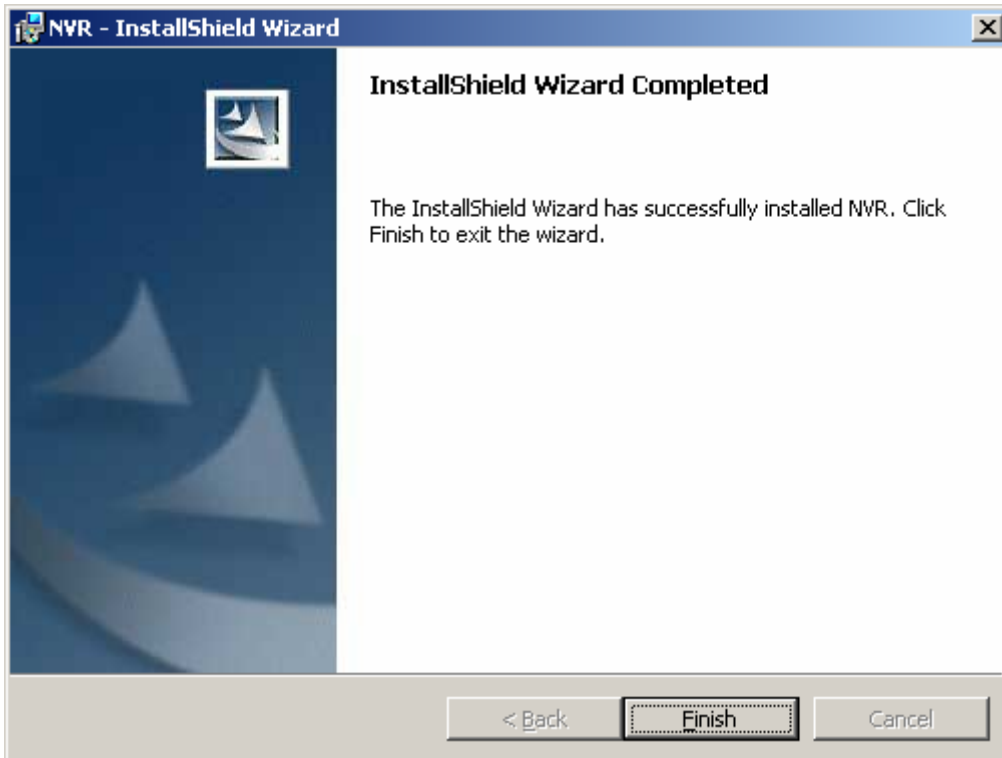


Figure 2-43 Complete NVR Workstation Installation

3. License Management

16-Channel Free, 32/48/64-Channel License

16-channel is free. You don't need any license to run 16-channel

License:

Number of Channel.	Need License?
16	NO
32	Yes
48	Yes
64	Yes



IMPORTANT: Please refer to ACTi Sales Representative for ACTi NVR Server license..

How to Setup 16-Channel License

After following all steps to install ACTi NVR Server, you can start using it. You don't need to change any setting for 16-channel usage.

How to Setup 32/48/64-Channel License

This section describes how to set license for 32/48/64 channel.

How to obtain license

To obtain license for 32/48/64 channels, please contact ACTi Sales Representative.

How to install license

Once you obtain license from ACTi Sales Representative, please log into ACTi NVR Server, open Active Setup, click on License tab.



IMPORTANT: When installing license to the system, please make sure you are running Active Setup program on the same NVR Server.

You can use following methods to install license to ACTi NVR Server:

1. **Registration By License Key:** Type in the license key, and click Apply. Make sure the NVR Server is connected to Internet so that the license and the machine key (MAC address) can be registered on the Registration Center
2. **Registration By Activation Key:** You may provide License Key and the MAC Address to ACTi's Sales Representative, and obtain the Activation Key. You then can copy the Activation Key and paste it into the box, then click apply to register it.

Registration By License Key

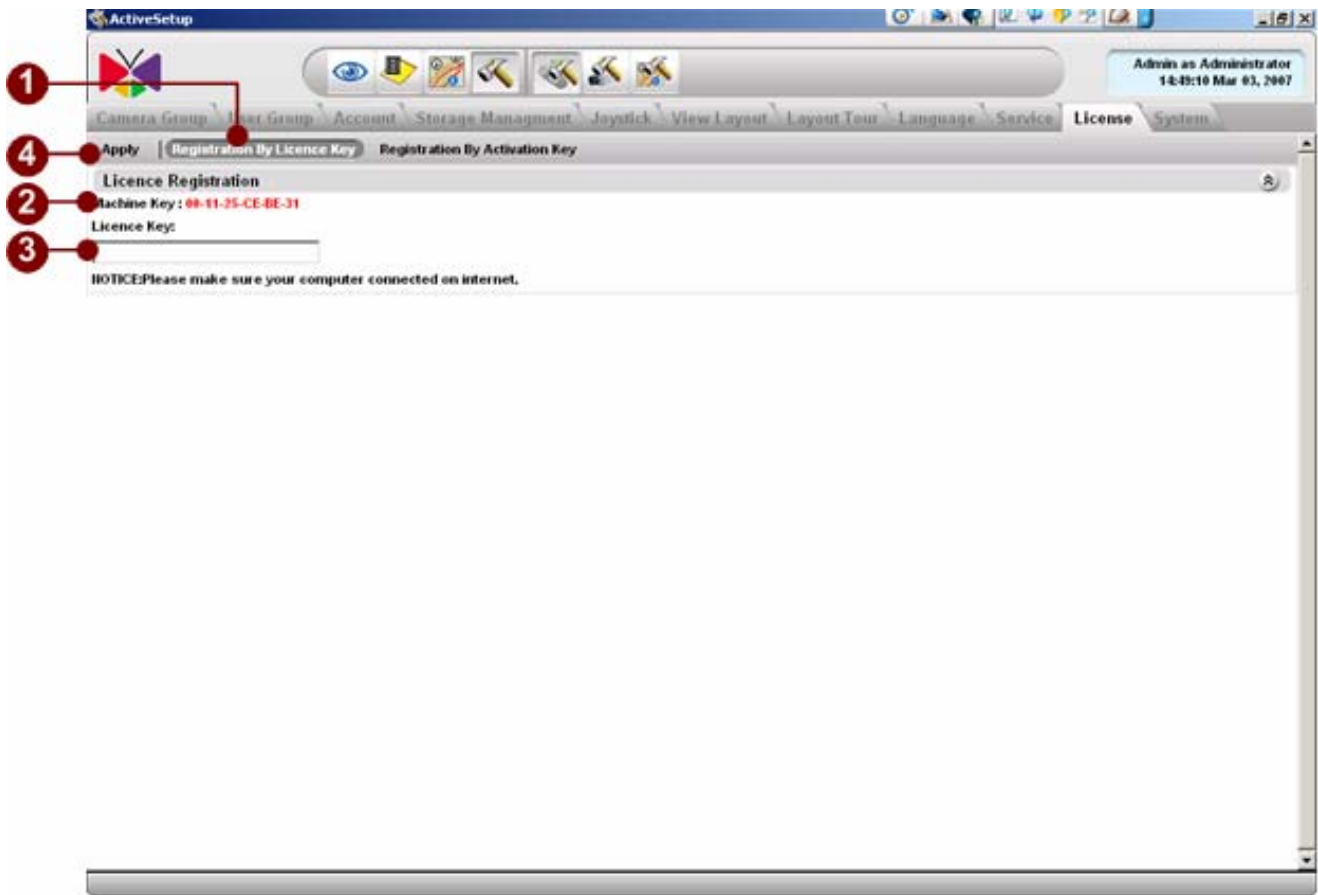


Figure 3-1 Register by License Key

1. **Registration By License Key:** Click this button to register by license key
2. **Machine Key:** MAC Address of the machine running ACTi NVR Server. If there are more than one MAC Address in the machine, only the MAC address with smallest number will be applied.
3. **License Key:** Input License Key provided by ACTi
4. **Apply:** Click Apply to register the license key to ACTi NVR System



IMPORTANT: When using this mechanism to register the license key, ACTi NVR Server will connect to Register Server on Internet. Please make sure the machine installing license key has the permission and Internet connection.

Registration By Activation Key

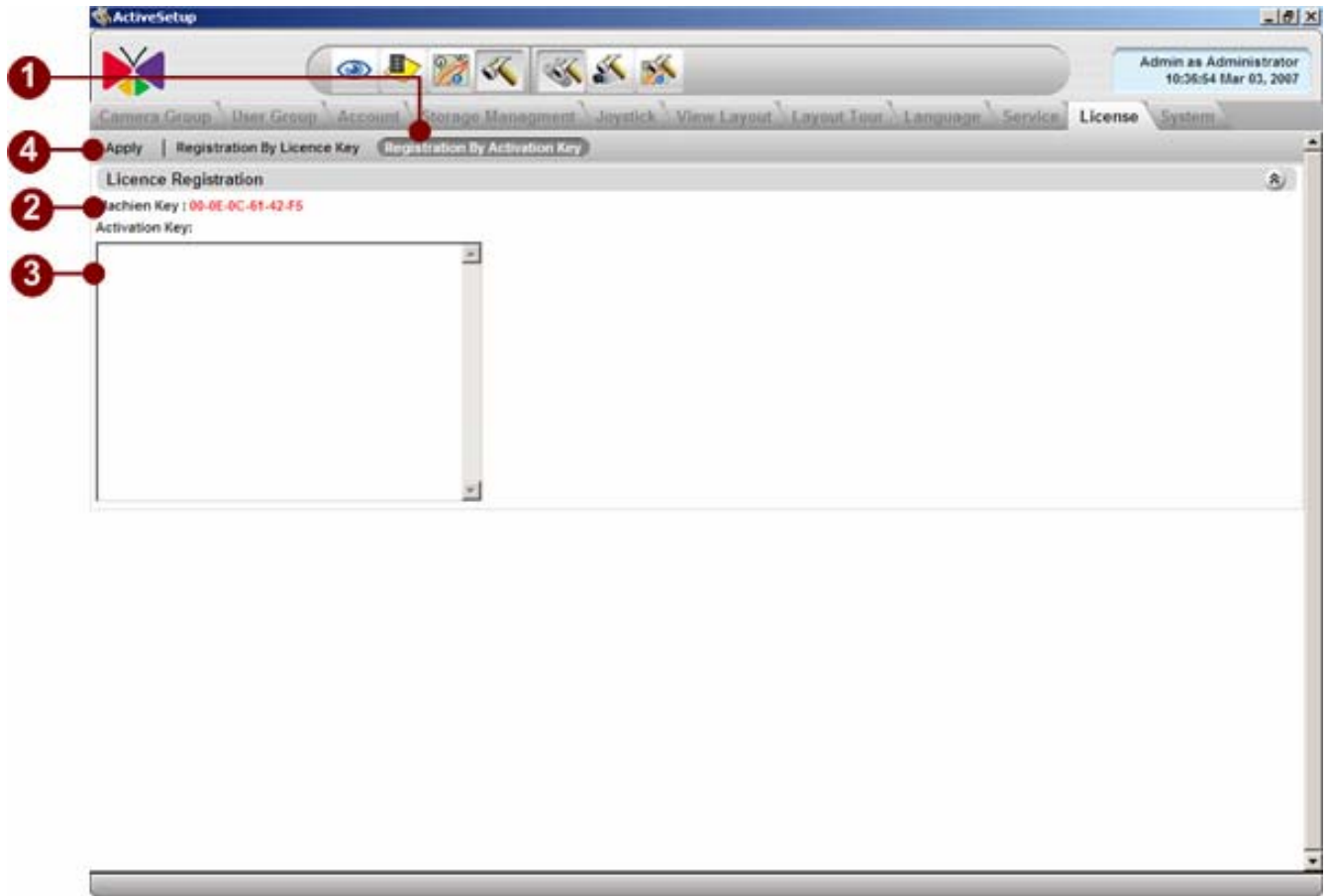


Figure 3-2 Register by Activation Key

1. **Registration By Activation Key:** Click this button to register by Activation key
2. **Machine Key:** MAC Address of the machine running ACTi NVR Server. If there are more than one MAC Address in the machine, only the MAC address with smallest number will be applied.
3. **Activation Key:** Input Activation Key provided by ACTi. You can simply copy the Activation key and paste it here
4. **Apply:** Click Apply to register the license key to ACTi NVR System. The registration status will be displayed



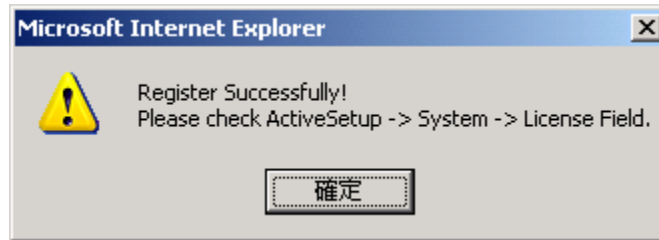
IMPORTANT: When using this mechanism to register the activation key, you need to provide the MAC address of the machine running ACTi NVR Server and the License Key. You can go to ACTi's web site to register yourself



IMPORTANT: If there are more than one Machine Key (MAC Address) in the machine, only the smallest one will be applied. Please make sure that you provide this Machine Key along with License to ACTi Sales Representative to get the Activation Key.

License Registration Messages

1. **Register Successfully:** Register successfully.



2. **License Key Format not correct:** Go check the license key format. Make sure the “-“ dash are entered in the license key



3. **Connection error to Registration Center:** Please make sure the Internet connection and connection to Registration Center is valid.




4. **Bad License Key or Activation Key:** Make sure the Activation key is correct



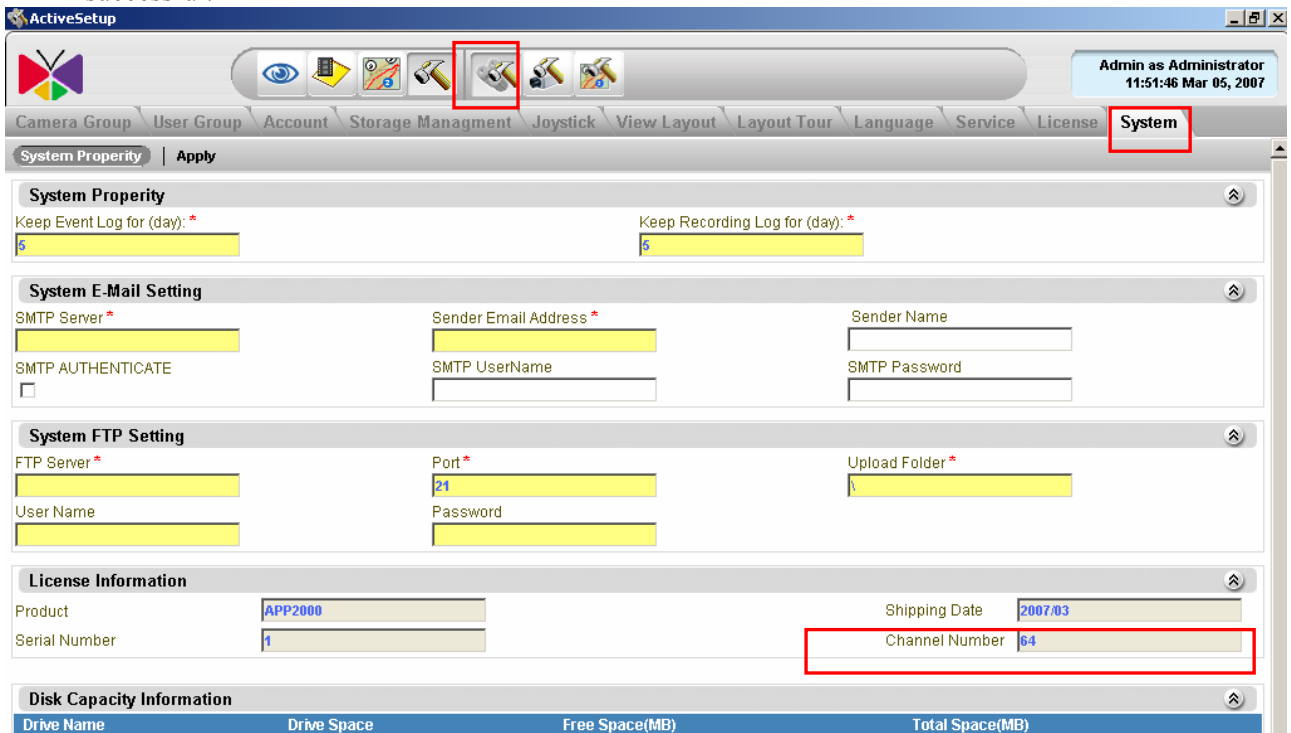
- Machine Key (MAC Address) not matched: Possible cause is the MAC address of the associated Activation is not valid. You might have registered the license key with other MAC address (or other PC) already



 **IMPORTANT:** If you still have trouble with license registration, please contact ACTi Sales Representative.

How to check license

- Check License status:** Please go to “System” page of the “System Setup”. Then check if the channel number displayed the same as your license. If they are the same, the registration is successful.



How to renew license

If you purchase a new license, please follow [How to install license](#) section to install the new license

4. Adding Devices

The NVR software’s functions (including Monitor, E-map, account authentication and etc.) is based on camera groups. To add a device, you need to

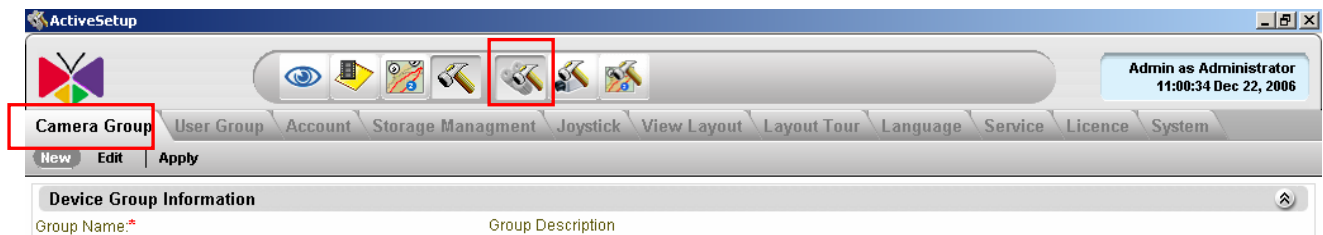
1. Create a camera group
2. Add a device it to a camera group

Create Camera Group

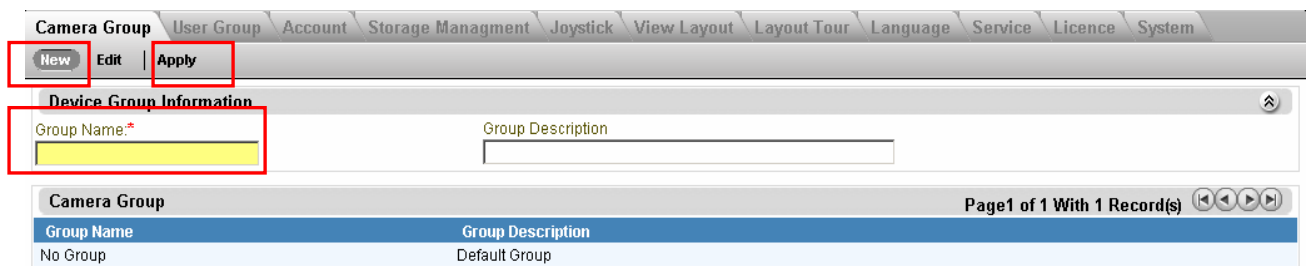


Step1. Double click the “Active Setup icon” **Active Setup** to start Active Setup

Step2. Select the “System Setup” and “Camera Group” page



Step3. Click the “New” button, then input the “Group Name” and then Click the “Apply” button



NOTE: For details, please go to “System Setup” of Chapter “Active Setup” in User Manual

Add a camera

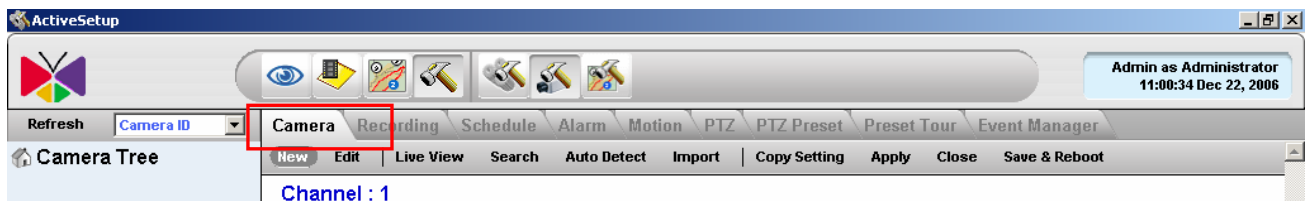


Step1. Double click the “Active Setup icon” to start Active Setup

Step2. Select the “Camera Setup”

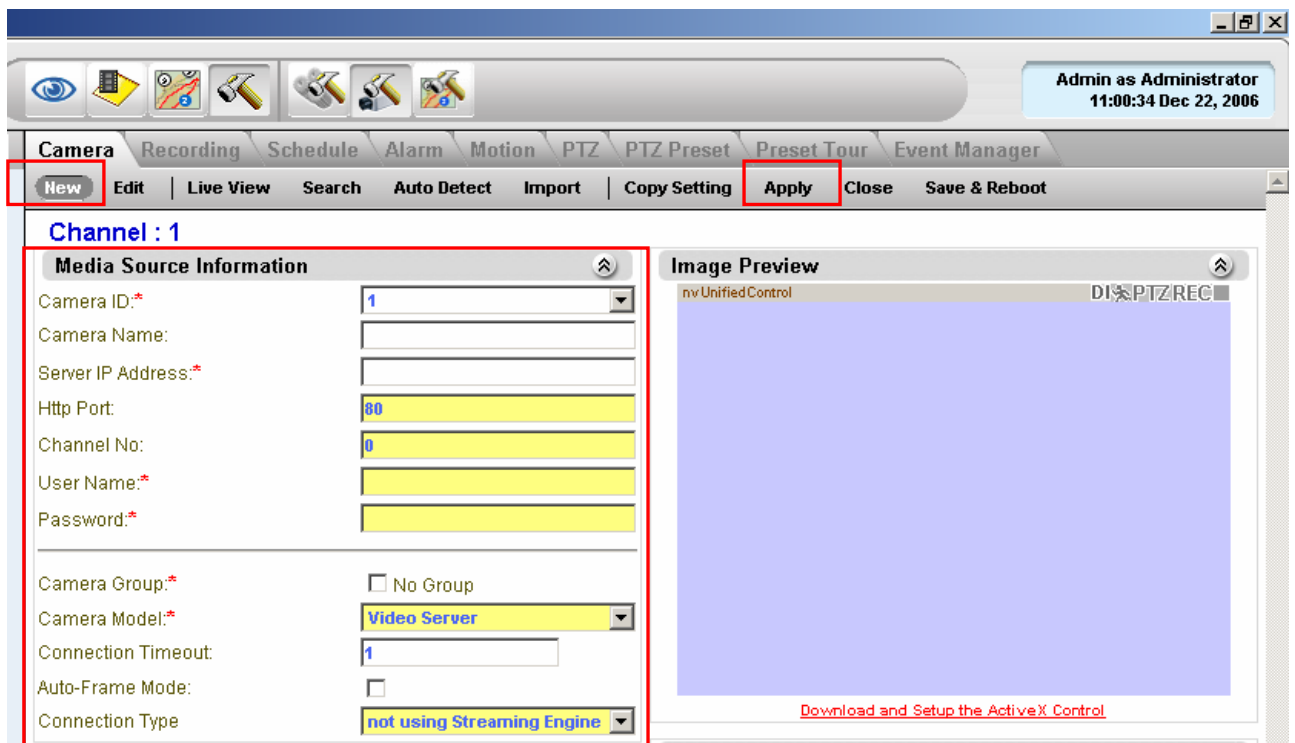


Step3. Select the “Camera” page



Step3. Click the “New” button,

- Input the “Camera Name”, “Server IP”, “Http port”, “User name”, “Password”
- Select the “Camera Group” and “Camera model” and then click the “Apply” button



NOTE: For details, please go to “Camera Setup” of Chapter “Active Setup” in User manual

5. Change Monitor Layout

You can pre-set some monitor layout for you to easily watch group of cameras.

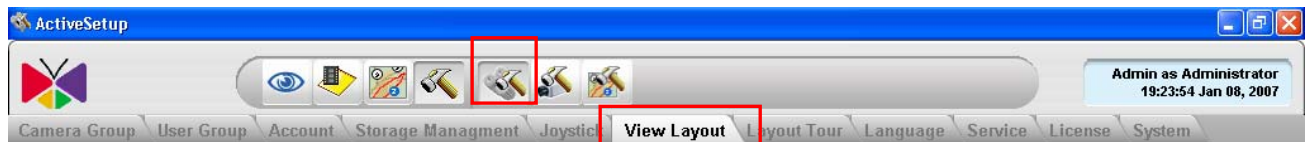
1. Create a camera group
2. Add a device it to a camera group

Setup Layout



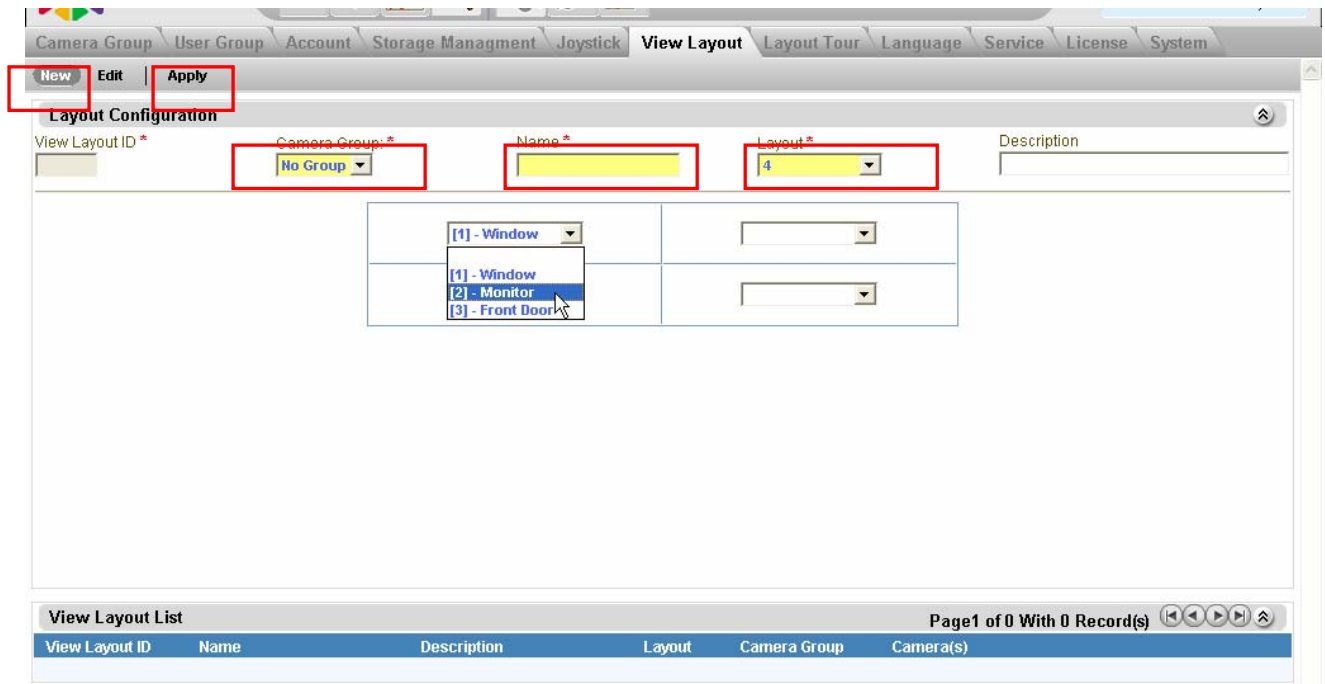
Step1. Double click the “Active Setup icon” to start Active Setup

Step2. Select the “System Setup” and “View Layout” Page



Step3. Select the “New” button

- Select the “Camera group” and select the number of the layout channels, input the “Layout Name” and then click the “Apply” button.



NOTE: For details, please go to “View Layout” of Chapter “Active Setup” in User manual

6. Schedule Recording

This section teaches you how to configure the recording schedule on the IP camera. The recording schedule is set by

1. **Weekly Schedule:** All recording will be done and repeated weekly.
2. **Special day:** You can set a special schedule for special days. This schedule will overrule your previous weekly setting.

Please go to “**Schedule**” page of the “**Camera setup**” to setup.

NOTE: For details, please go to “**View Layout**” of Chapter “**Active Setup**” in User manual

7. Archiving

The recording path of the NVR has two things to setup

1. **Recording Drive:** The hard drives for NVR to record on.
Please go to “**Recording**” page of the “**Camera setup**” to set.
2. **Recording path:** The folder path of the recording on the hard drives.
Please go to “**Storage Management**” page of the “**system setup**” to set.

NOTE: For details, please go to “**Recording**” and “**Storage management**” of Chapter “**Active Setup**” in User manual

8. PTZ Setting

For PTZ settings, you will need to select the PTZ settings first and you can set the presets and preset tours.

1. **PTZ setting:** PTZ protocol, baud rate, camera ID must be set correctly.
Please go to “**PTZ**” page of the “**Camera setup**” to set.
2. **Preset setup:** Setup the presets and preset tours for camera to go to.
Please go to “**PTZ preset**” and “**Preset tour**” page of the “**Camera setup**” to set.

NOTE: For details, please go to “**Recording**” and “**Storage management**” of Chapter “**Active Setup**” in User manual

9. Event Action Setting

Upon an event, the NVR software can start recording, move camera to a preset points and etc. To make it work, you need to set the event type, event schedule and event actions.

1. **Event type:** There are many event types, including motion detection and alarm inputs. For motion detection, you need to set the motion detection area and sensitivity.
Please go to “**Motion**” page of the “**Camera setup**” to setup.
2. **Event actions:** To set the NVR actions to take upon event.
Please go to “**Schedule**” page of the “**Camera setup**” to set.
3. **Event Schedule:** To set the duration of when will event action take.
Please go to “**Event manager**” page of the “**Camera setup**” to set.

NOTE: For details, please go to “**Camera setup**” of Chapter “**Active Setup**” in User manual

10. Account Setup

The authentication of each account is based on operation allowed to take and camera channel allowed to see. Operation allowed to take is based on different levels which is selected. Camera channels allowed to see is based on different camera groups which are selected.

1. **User Group:** You can define different groups with different permission which allows user to operate NVR software. For example: administrator users can operate all functions and normal user can only watch the video.
Please go to “**User Group**” page of “**System Setup**” to set.
2. **User information define :** This is to define every user’s information. In this page, you can input all user’s information, select the user group this user belongs to and camera groups this user can access.
Please go to “**Account**” page of the “**User information**” to setup.

NOTE: For details, please go to “**Recording**” and “**Storage management**” of Chapter “**Active Setup**” in User manual

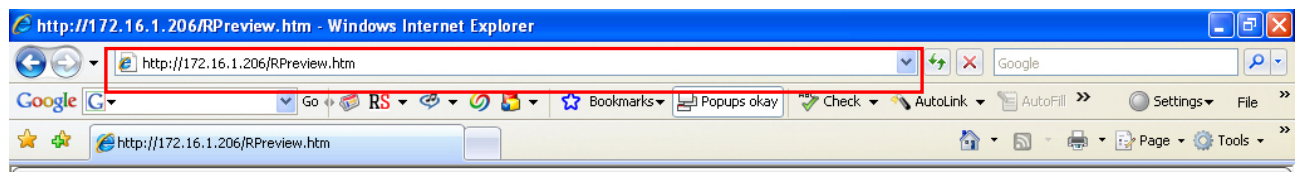
11. Remote Client Login

The NVR can be accessed remotely via Internet Browser. You simply type the IP address or the domain name of the NVR PC. To ensure this function working well, you need to set the Web-server first. Please follow the “Web-server” section in the installation guide

How to Login

Step1. Open the Internet Explorer

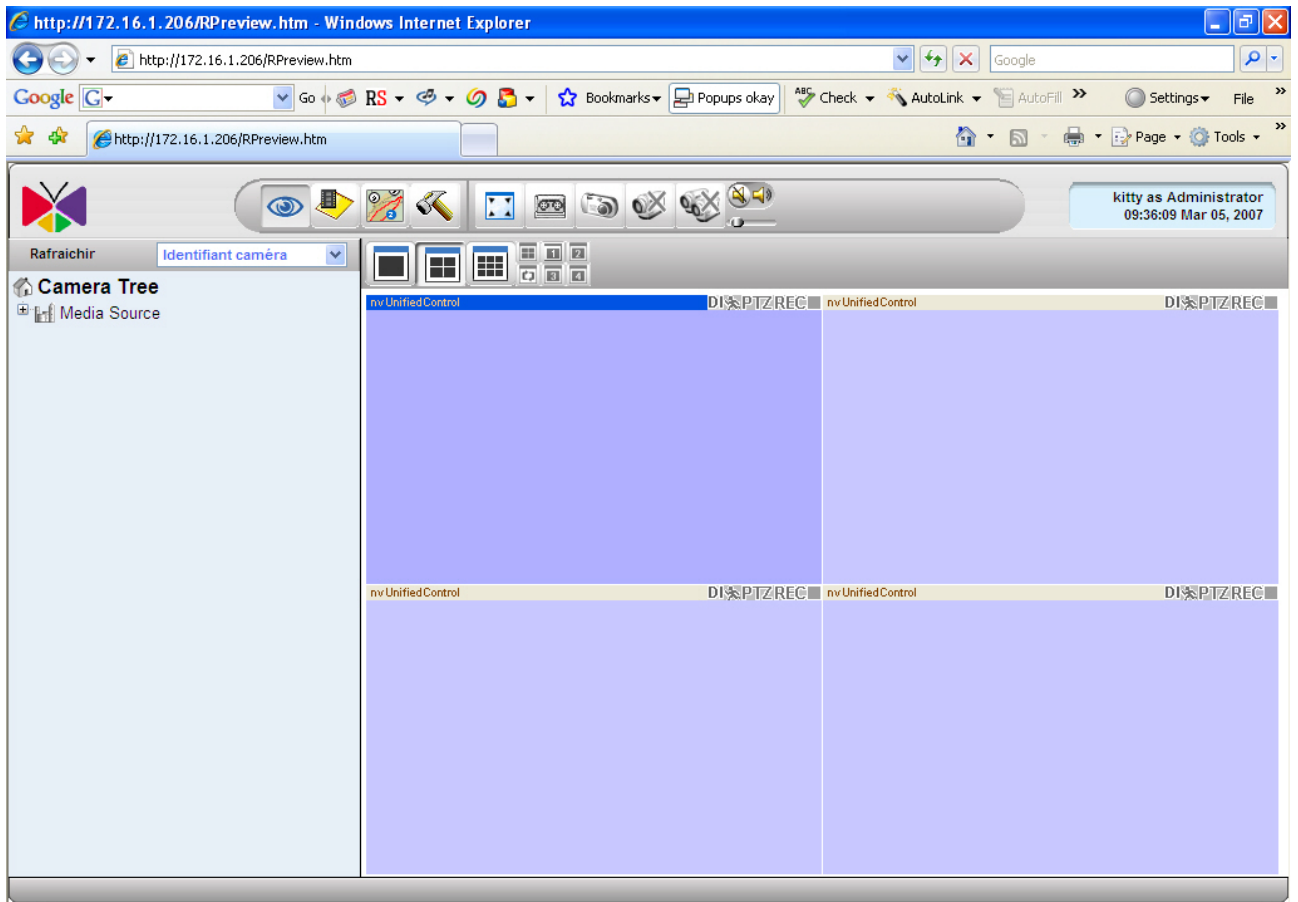
Step2. Enter the IP of the NVR PC



Step3. If there's any Security notes, just click to enable it



Step4. The web-client below will appear



NOTE: For details, please go to Chapter “NVR Web Client” in User manual