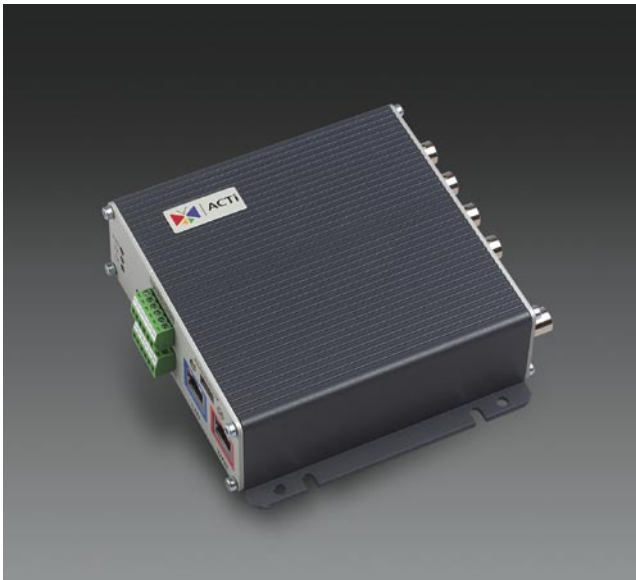


SED-2320Q



- MPEG-4 ASP compression
- CIF up to Full D1 resolution at 30/25 FPS
- Multi-stream with variable frame rate in the same compression
- Two way audio supported
- Hardware motion detection, Digital Input / Output
- Fail-over network protection and QoS enabled (L3) video streaming
- Hybrid analog and ethernet video output
- Extended temperature supported (SED-2320QT)
- Optional rackmount kit available
- Real-time quad video
- Monitor output displays full-screen or quad image
- Up to 4 analog video inputs blended into one digital MPEG-4 output stream

Quad Display

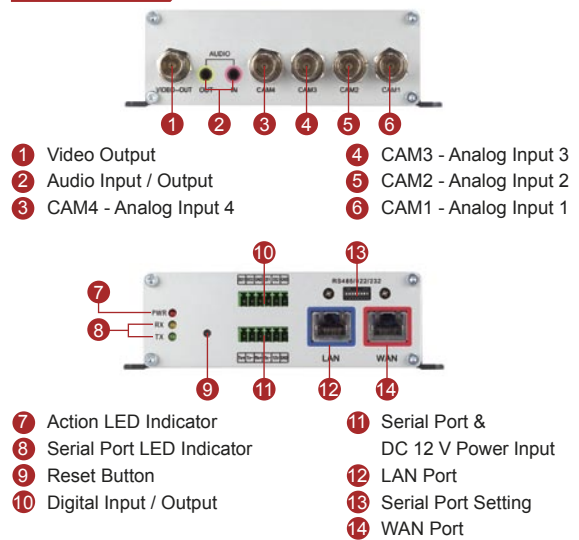


Full-screen

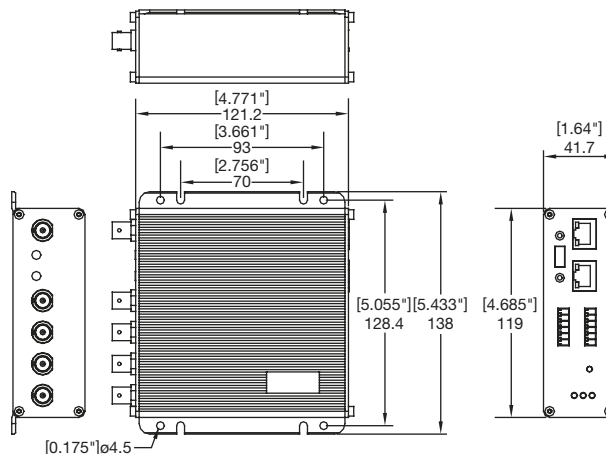


Number of Video Input	Total Stream Output	Full-screen Display (resolution)	Quad Tiling Display (resolution of each channel)
1	1 D1 stream	D1	CIF
2	1 D1 stream	D1	CIF
3	1 D1 stream	D1	CIF
4	1 D1 stream	D1	CIF

SED-2320Q With audio



DIMENSION DIAGRAM



Unit: mm [inch]

**PRODUCT SPECIFICATION**

Video (Compression)	
Compression	MPEG-4 ASP Compliant Compression
Picture Resolution	1 channel : Full D1 (720 x 480 in NTSC, 720 x 576 in PAL) 2 channel : CIF (352 x 240 in NTSC, 352 x 288 in PAL) 3 channel : CIF (352 x 240 in NTSC, 352 x 288 in PAL) 4 channel : CIF (352 x 240 in NTSC, 352 x 288 in PAL)
Bit Rate	28 K ~ 3 M bps
Image Frame Rate	30 fps at full D1 resolution (NTSC); 25 fps at full D1 resolution (PAL)
Multi-stream	Up to 4 configurable frame rate/bit rate streams for preview and recording
Video input	
Composite Input	4, CVBS, 1.0Vp-p with 75 Ω loading, BNC connector
Video Output	
Composite Output	1, CVBS, 1.0Vp-p with 75 Ω loading, BNC connector
Audio Input	
Compression	8 kHz, Mono, PCM
Audio Line input	Unbalanced, 1.4 Vp-p, 1Vrms, 3.5 mm Phone Jack
Audio Output	
Compression	8 kHz, Mono, PCM
Audio Line output	Unbalanced, 1.4 Vp-p, 1Vrms, 3.5 mm Phone Jack
Alarm	
Input	1 TTL, terminal block
Output	1 TTL, terminal block

Remote Control	
Serial Port	RS-485: half duplex, terminal block; RS-422: full duplex, terminal block; RS-232: full duplex, terminal block
External I/O	
Reset Button	Factory default
LED	Power / serial port / network status
Network	
LAN Port	Ethernet (10/100Base-T), RJ-45 connector
WAN Port	Ethernet (10/100Base-T), RJ-45 connector
Protocol	TCP, UDP, IP, HTTP, DHCP, PPPoE, RTP, RTSP, FTP, SMTP, DNS, DDNS, NTP, ICMP, IGMP, ARP
Software	
Web Browser	Microsoft Internet Explorer 6.0 or above
SDK	ACTi SDK-10000
PTZ Protocol*	Pelco-P_type1, Pelco-P_type2, Pelco-D, Dynacolor, Samsung, VCL, Videotrek, Kampro-V1, Kampro-V2
Security	Password protection : configured by the administrator
Operating	
Temperature	5 °C ~ 50 °C (40 °F ~ 122 °F), SED-2320Q; -30 °C ~ 70 °C (-22 °F ~ 158 °F), SED-2320QT
Power	
Power Requirement	DC 12 V ±10%
Power Consumption	9.6 W
Physical	
Dimensions (WxHxD)	119 x 41.7 x 122 mm (4.69" x 1.65" x 4.81")
Weight	470 g (1.04 lb)

* These PTZ protocols are supported in ACTi NVR and Streaming Explorer.

ORDERING INFORMATION

Model Name	w/ Audio	Extended Temperature
SED-2320Q	V	
SED-2320QT	V	V