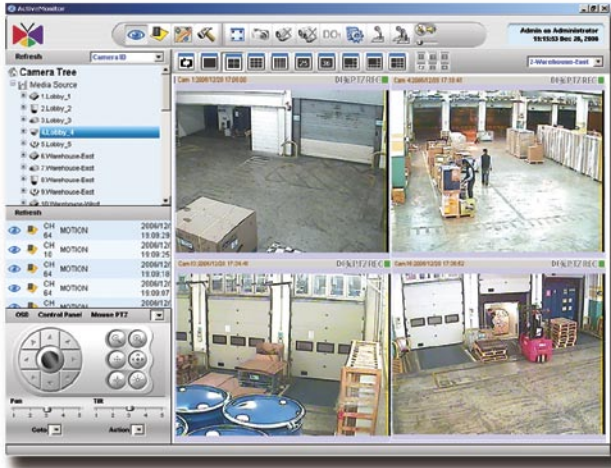




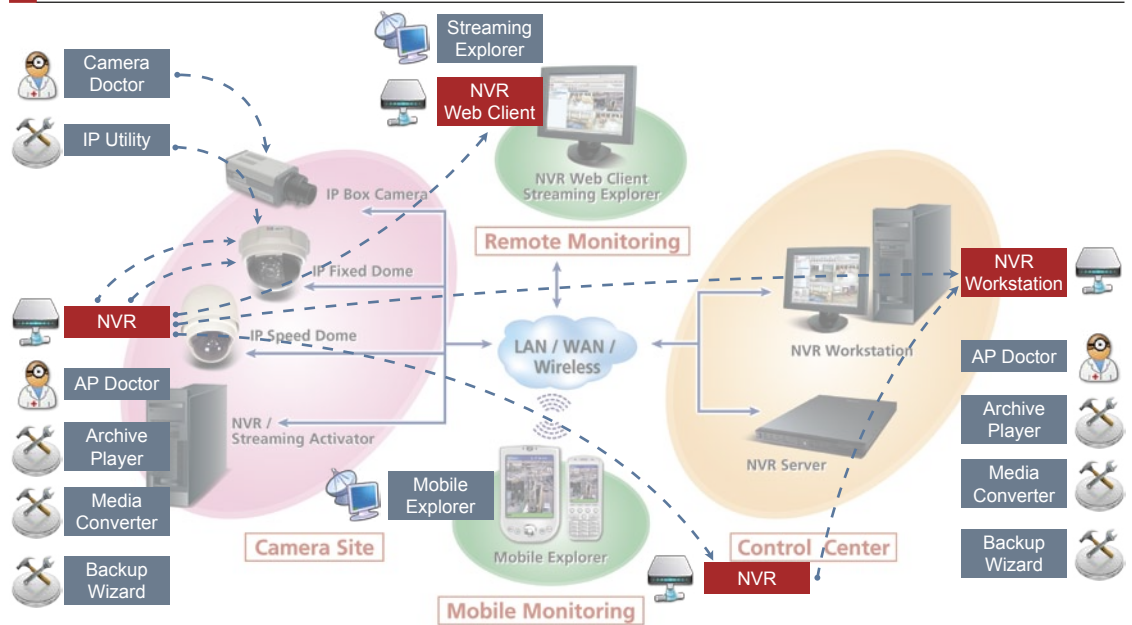
NVR Server

ACTi NVR Server



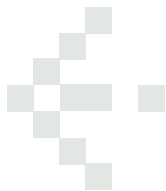
- Manages up to 64 cameras with tree-directory display
- Supports 1, 4, 6, 8, 9, 10, 16, 25, 36 window layout
- Supports MPEG-4 Format
- Customizable logo and user interface
- Multiple-channel preview in full-screen mode
- Supports different frame rate on live view and recording
- Support dual monitor and hot-spot window
- Continuous, Schedule, Motion, Alarm Recording
- Supports motion detection and Digital I/O event from hardware
- Maximum 30 seconds pre-event recording
- Expandible PTZ commands
- Search video clips by date, time and event
- Time-based search bar
- 4-channel synchronized playback
- eMap Manager
- NVR Web Client and NVR Workstation

POSITIONING



BUNDLED APPLICATION

	Management Utility	
	IP Utility	Search, manage devices, upgrade firmware, backup configuration
	Archive Player	Archive playing tool with playback panel and snapshot functions
	Media Converter	Converts recorded archives to AVI files
	Backup Wizard	Backup and restore configuration on NVR and Activator
	Remote Utility	
	Streaming Explorer	Web tool to manage devices remotely, comes with PTZ configuration tool
	Mobile Explorer	Live view and PTZ functions on Microsoft Windows Mobile platform
	Trouble-Shooting Utility	
	Camera Doctor	Device diagnostic and firmware debug tool
	AP Doctor	NVR and Activator diagnostic and application debug tool



PRODUCT SPECIFICATION


System Requirements	
PC Specification	16 Channel: Intel Core 2 Duo 2.4 GHz, 1 GB Memory, 250 GB HDD 32 Channel: Intel Core 2 Duo 2.66 GHz, 2 GB Memory, 250 GB HDD 48 Channel: Intel Core 2 Quad 2.66 GHz, 4 GB Memory, 250 GB HDD 64 Channel: Intel Core 2 Quad 2.67 GHz, 4 GB Memory, 250 GB HDD
Operating System	Windows XP, Windows 2003, WSS 2003
Browser	Microsoft Internet Explorer v6.0, v7.0
Web Server	Microsoft IIS Server. Required for NVR Web Client*
Preview	
Maximum Number of Camera	64
Window Layout	1, 4, 6, 8, 9, 10, 16, 25, 36
Tree Display Panel	User may drag-n-drop to drag a video source to the layout manager for live view
Web Client	Remote live view via Internet Explorer
Patrol Mode	Switches and displays each preview window accordingly. Pre-defined layout can be set to patrol mode as well
2-Way Audio	Supports 2-way audio. User may have 1-to-1 or 1-to-many audio broadcast to multiple devices at the same time.
Create Snapshots	Creates snapshot images on-the-fly and as an event index for search later on
Advanced Preview Mode	Maximum 36-channel preview at the same time with different frame rate adjusted automatically
Layout Manager	Setup pre-defined window layout to group certain cameras in the same layout. Layout manager can be displayed in full-screen mode.
Hot-Spot Window	The channel with an event will be switched to the hot-spot window.
Recording	
Format	Standard MPEG-4 format. Compatible with FFMPEG, XviD, DivX, Intel IPP
Schedule Recording	Records video with user-defined schedule and time period
Alarm Recording	Records video when a digital input event is triggered
Motion Recording	Records video when motion detected
Pre-event Recording	User-defined time period to record before a certain event occurs. Maximum 30 seconds.
Post-event Recording	User-defined time period to record after a certain event occurs. Default 5 minutes.
Watermark*	Digital time code embedded from hardware
Storage Manager	
Number of Drives	Supports up to 23 drives in one machine
Keep Certain Days	The video clips will be kept for certain days according to user-defined value
Recycle Recording	The oldest video clip will be overwritten when the disk reaches its minimum space requirement
Total Space Management	When total space reaches its minimum space requirement, certain space will be clean up. The oldest files will be removed first.
Playback	
Playback Mode	Play, Pause, Stop, Fast Forward, Fast Rewind, Play Backward, Play frame by frame, 1/2/4/8x Speed Control
Play Multiple Files *	Plays multiple files in sequence for a period of time
Create Snapshots	Creates snapshot images on-the-fly and can be searched as an event
Export Video	Exports a period of video clips into one AVI file
synchronized Playback	4-channel synchronized playback at the same time
Record while Playback	When playback a video archive, user may record part of the video archive to a new archive.
Search	
Time Sequence Search	Search video clips with date, time, channel
Event Search	Search motion detection, digital input, bookmark, snapshot event with specified date, time, channel
Thumbnail Image Search *	Search video clips with thumbnail image previews
Status Event Search	Search events on video loss / recovery, network disconnect / reconnect, user login / logout, database log with specified date, time, and channel


Time-based Search Bar	The recording and events are displayed with a time-bar, user may click on the bar to start playing the recorded archive
Snapshot Viewer	Display snapshots in thumbnail view; user may browse the snapshots then click it to start playback video clip at that time stamp.
PTZ Control	
PTZ Management	Manages pan, tilt, zoom operation with speed control
Protocol Supported	Pelco-P, Pelco-D, Lilin, Dynacolor, Samsung, Kampro, Sony VISCA, Panasonic protocol supported
Preset Position	Goto, set, clear preset positions and patrol on preset positions
Preset Position Number	32
PTZ Tour	Patrol preset positions with user-defined dwell time
PTZ Pattern	Executes speed dome pattern command
Expandable PTZ Command	User-defined PTZ command to support additional PTZ protocols
Mouse PTZ	On-screen 8-direction PTZ operation with mouse operation. This can be run under full-screen mode as well
USB Joystick on PC	Connects joystick on the PC via USB port to control speed dome directly
Control Panel on PC	Connects control panel on the PC via COM port to control speed dome directly
Event Handling	
Event Types	Handles motion detection, alarm, video loss, network disconnection events
Event Acknowledgement	Event will need to be acknowledged by security operator
Trigger Digital Output	Triggers digital output when certain events (digital I/O or motion detection) occur
Hot-Spot Window	Activates and switches the channel with event to the hot-spot window. The original video in the hot-spot window will then be switched over.
Pop-up Window	Mini-preview window will be pop-up when event occurs. Pop-up window will be dismissed when user-defined dwell time elapsed or security operator click on the "Dismiss" button.
Event Log	Triggered event will be recorded into a event log
E-Mail Notification	E-Mail notification with captured snapshot
FTP Notification	FTP captured snapshot to the FTP server
Play audio file	Plays user-defined audio file or beep on the machine
Goto PTZ Preset	When event occurs, it requests the speed dome to go to certain PTZ preset position
Execute Command	User-defined execution command will be executed.
Scheduled Event*	User may setup a schedule to execute certain operation. For example, generate a snapshot in JPEG and FTP to a site.
eMap	
eMap Manager	eMap configuration and management
eMap Monitor	Creates alarm when an event occurs on a certain camera in eMap
Preview-All Mode	With this mode, all cameras in the associated map will be displayed with QCIF @ 1FPS preview. When double-click on the preview window, the original video window will be brought up with its original resolution and frame rate
eMap Tour	Maps can be patrolled and displayed one by one with user-defined dwell time.
NVR Web Client Function	
Remote Preview	Live view via Web browser
Remote Playback	Search and playback via Web browser
Remote Search	Search certain events via Web browser
Remote Map	Manages map via Web browser
Permission Control	
Multi-level Permission	Administrator, Standard User, Guest levels. User may add new User Group for advanced permission control
Security	Account/password defined with associated permission control
Camera Group Permission	User may setup the permission between user account and the camera group
eMap Permission	User may setup the permission between user account and eMap layer

* The features will be implemented in later released bundled application

TECHNICAL SUPPORT

 E-Mail: customer.support@acti.com

 Skype: [customer.support-acti.com](https://www.skype.com/people/customer.support-acti.com)

 MSN Messenger: [customer.support@acti.com](https://messenger.msn.com/customer.support@acti.com)

* All specifications are subject to change without notice.
* All brand names and registered trademarks are the property of their respective owners.

www.acti.com

 **ACTI**
Connecting Vision