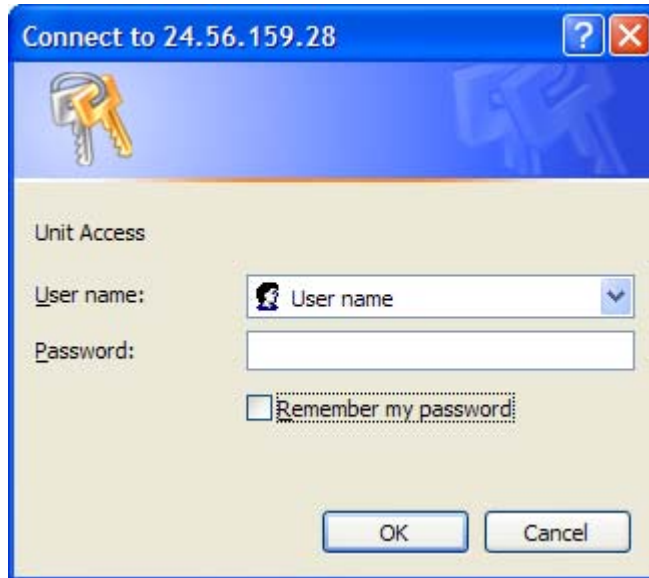


Instructions for Connection to VideoEdge®

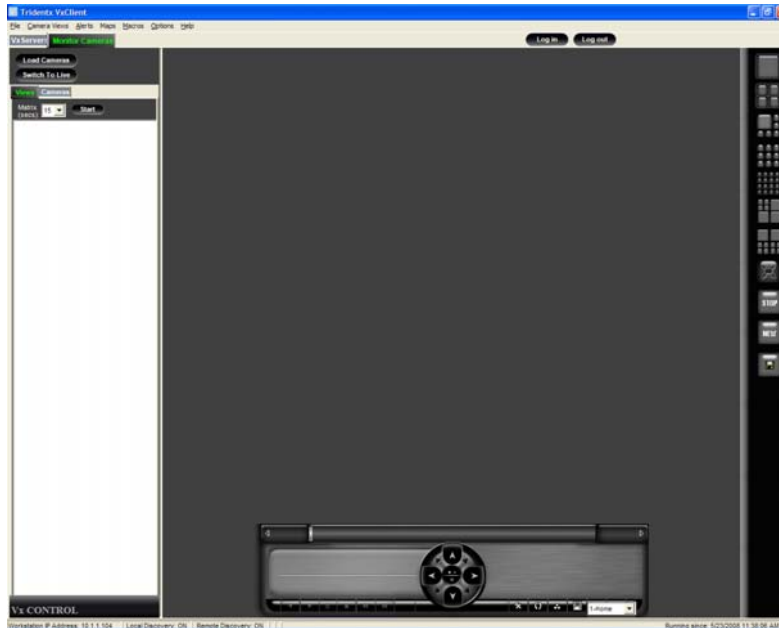
Using a web browser (Note: computer can be Windows, Mac, or UNIX based):

1. Open your web browser
2. Enter the VideoEdge server's IP address (<http://24.56.159.28>)
3. Enter your user name and password.

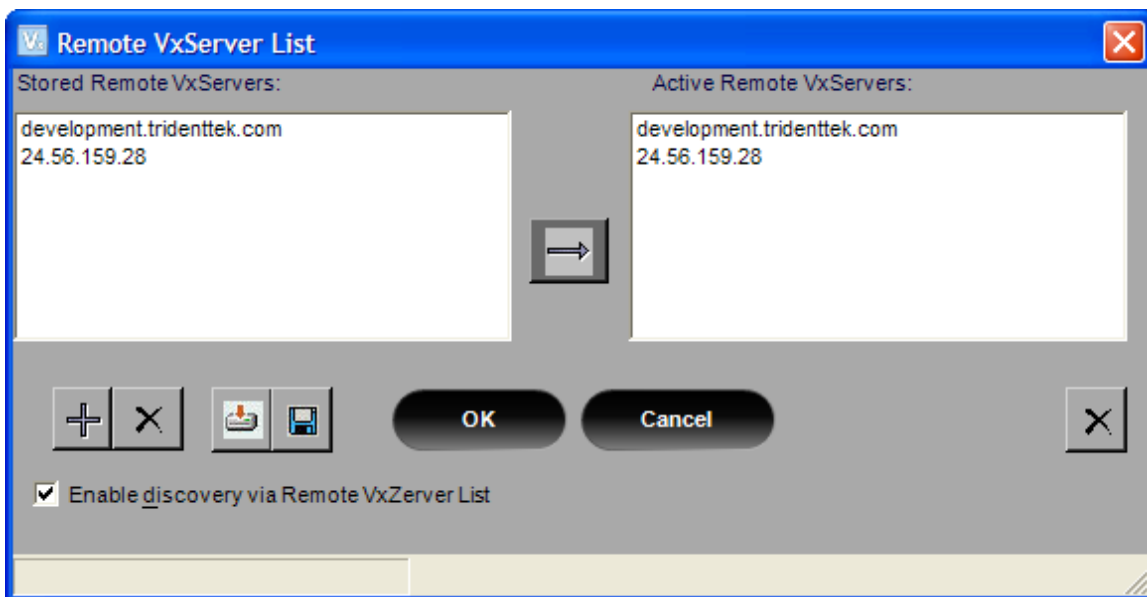


Using the VideoEdge VX Client (Requires a Windows based computer)

1. Double click the VideoEdge VX Client icon to run the program.



2. At the main page, use your mouse to select the "Options" pull-down menu and select the "Edit Remote VxServer List" line item. A pop up will appear.



3. Select the "+" icon and enter the Domain name or IP address of the server, then click "enter".
4. Click "ok" to close the dialog box to return to the main page.
5. Click the "VX Servers" tab on the left hand side to view your available servers. The server you just entered should be listed and the login status should be "Not Logged in".
6. Click the "Log in" button on the top right section of the main screen.
7. In the resulting "Login" pop up, highlight the server you wish to login in to, enter the user name and password, and click "login", then done.

Login

User Authentication

Login Status	VxServers
✗	VIDEOEDGE-N...
✗	Montvale-Vide...

User name:

Password:

Remember user name and password

Login automatically

Open default view after login

Filter List: ▼

Note: Please check your username/password combination and proxy server settings if you receive a "Login failed" status.

Status: