



Release Notes

Version 4.30

Applicable Software	Product Data
<ul style="list-style-type: none">• Network Client 4.30• Intellex Digital Video Management Software 4.30• Archive Manager 4.30• Policy Manager 4.30• Intellex Player 4.30• Intellex API 4.30• Browser Client 4.30• Pocket Client	<p>Visit the Intellex® Digital Video Management Systems section of our web site – www.americandynamics.net/intellex – to download data sheets and other documentation in PDF format.</p>

Notes:

In case of discrepancy, the information in this document supersedes the information in any document referenced herein.

Contents

CONTENTS	1
WHAT'S NEW IN THIS RELEASE	2
NEW FEATURES AND ENHANCEMENTS.....	3
Widescreen Support.....	3
Higher Image Quality Settings on the Network Client	5
Intellex Player Updates	6
New Video Capture Card Platform	6
Improved Frame Rate and Resolution with the new Video Capture Card	6
Intellex DVMS/LT Auto Rate Mode	7
Intellex API Updates	7
Audio Support.....	7
The New Display Library	7
Compatibility	7
Presets and Patterns.....	7
KNOWN LIMITATIONS AND ISSUES.....	8
CLOSED LIMITATIONS & ISSUES.....	10

What's New in This Release

The Intellex 4.3 release is a combination of hardware and software updates to Intellex suite. The following new features and enhancements have been added as part of the Intellex 4.30 and Network Client 4.30 release:

- Widescreen Support
- Higher Image Quality Settings on the Network Client
- Intellex Player Updates
- New Video Capture Card Platform
- Increased Frame Rate and Resolution with new Video Capture Card Platform
- Intellex DMVS/LT Auto Rate Mode
- Intellex API Updates
- Audio Support
- New Display Library
- Compatibility

See *New Feature and Enhancements* for more details on the added features.

New Features and Enhancements

Widescreen Support

As standard CRT Monitors are being replaced by TFT monitors many of which are widescreen (16:9) aspect ratio, the Intellex GUI will support widescreen resolutions. TFT monitors also have a “native” resolution and running a display at any other resolution may result in much poorer video quality. The Intellex GUI will no longer insist on a set resolution but rather it should run at whatever system resolution the system has configured.

On startup, Intellex will default to the existing standard Intellex GUI layout however there is an alternative Intellex GUI layout for display at widescreen monitor resolutions.

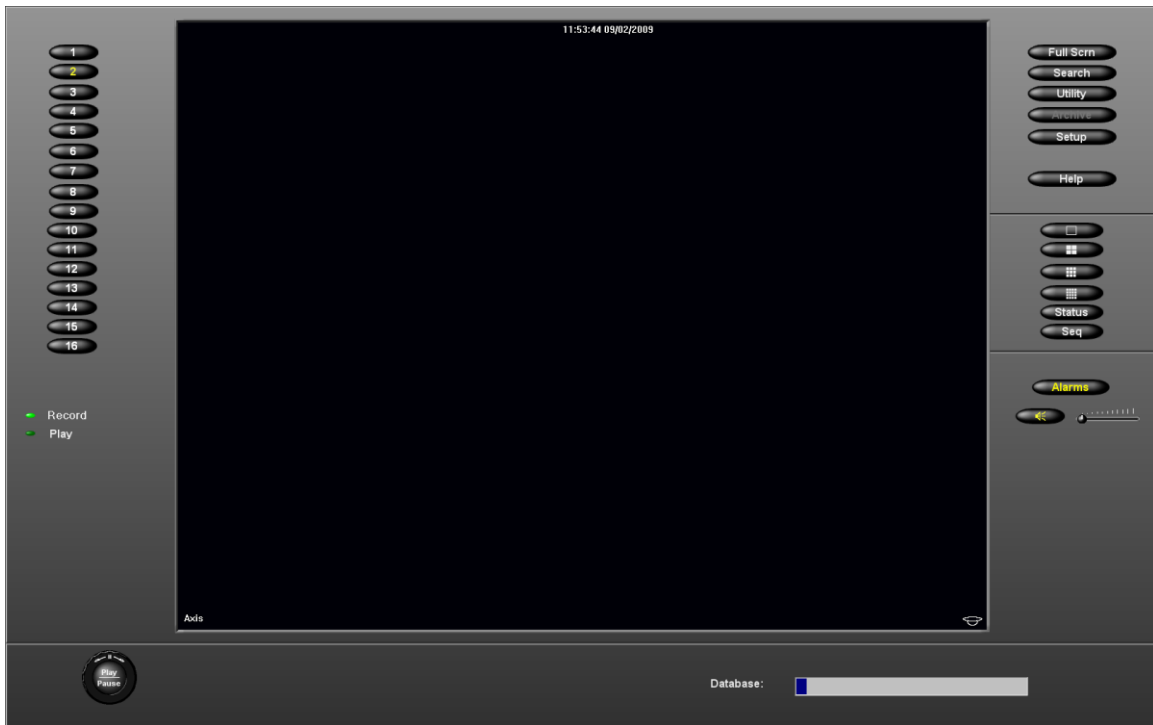


Figure 1: Intellex Widescreen GUI layout

The user can choose between the standard Intellex GUI and the widescreen Intellex GUI. A radio button in the Setup > Display dialogue enables the operator to use the existing standard Intellex GUI or the new widescreen optimized GUI.

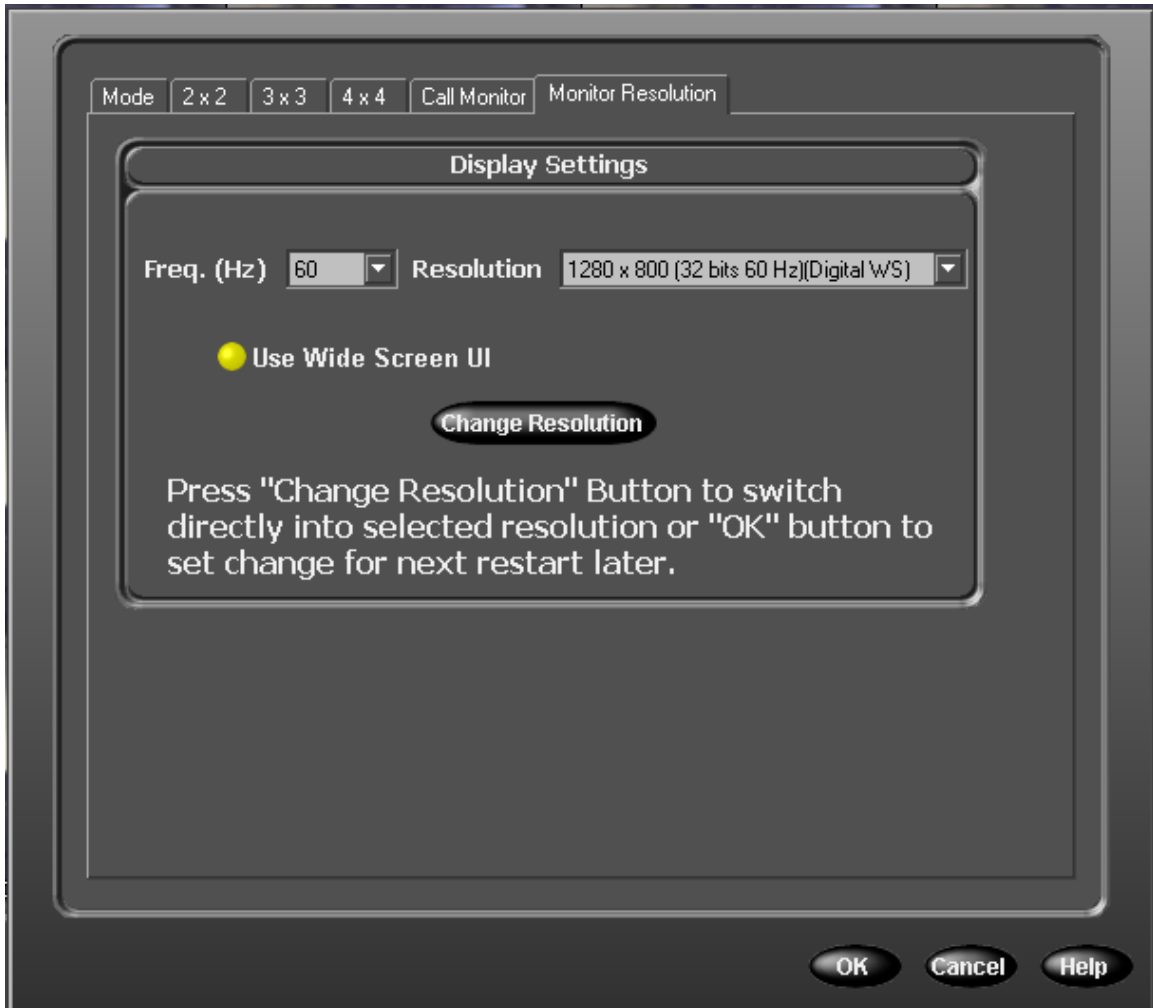


Figure 2: Setup Display Monitor Resolution Dialog including the new wide screen button

Intellex provides the ability for operators to change the screen resolution from within the application. A button in the Setup > Display > mode dialogue (see Figure 2) launches the display setting control. The Intellex GUI will resize itself to fit the current system resolution

Limitations

- Intellex will preserve the 4:3 aspect ratio of the video on a 16:9 display when in Full Screen display mode.
- When swapping monitors on Intellex, it will be necessary to switch the resolution down to license settings.
- Intellex will require a restart in/out of switching to resolution of 800 x 600 only.
- True 4 CIF resolution on the Ultra **shall** get scaled up/down for the live display when monitor resolution is at or above 1024 x 768.
NOTE: To get true 4 CIF resolution on an Ultra, customers should still use 1024 x 768 as minimum resolution.
- Intellex will not support displaying the Intellex GUI in portrait mode.

- Due to the various combinations of monitor screen sizes and resolution settings some users may see the video display stretched slightly. This is due to the selected resolution not matching with the native monitor resolution. In order to rectify the problem users should run at the native/optimal resolution for the monitor. This can be done with reference to your monitor documentation.

Extended Monitor Support

Default Settings

When a monitor is connected to the Intellex 4.3 DVMS, the display resolution will be set at 800x600

When a monitor is connected to the Intellex 4.3 Ultra, the display resolution will be set at 1024x756

All Monitors (4x3 and WS Monitors)

The user can manually adjust the display resolution with the display options in Intellex however they are required to know the native/optimal resolution setting of the monitor to obtain the best display and picture quality.

Wide Screen Monitors

In order to use the new WS GUI layout the user must enable it in the display options.

Note: The Intellex does not support Wide Screen resolutions below 1024x756.

Higher Image Quality Settings on the Network Client

The Image Quality value representing the highest setting has changed to 90, giving the option of even higher picture quality than before.

The quality slider shown in Figure 1 allows the user to set the live video quality between the quality setting values of 20 for the low end, and 90 for the high end.



Figure 1: Camera settings Dialogue

Intellex Player Updates

New Intellex Player functionality has been added to display IPS and Resolution of the Video being played.

For each video stream being played on Intellex Player, the user is able to right click and enable / disable the option for displaying the IPS speed of the video being played and/or for displaying the resolution of the video being played.

The default setting for displaying the IPS and Resolution in Intellex Player display window is OFF.

The Intellex Player Application is now available as an upgrade application download from American Dynamics Website.

New Video Capture Card Platform

The video processing/capture card is designed to capture and compress up to 16 channels of video at 4CIF resolutions. This video card has been redesigned to support increased resolution on the DVMS/LT platforms and increased frame rates across all Intellex platforms.

Improved Frame Rate and Resolution with the new Video Capture Card

With the introduction of the new video capture card, the improved resolution and frame rate on the Intellex v4.3 platforms are as follows:.

NTSC	1CIF	2CIF	4CIF
Intellex Ultra	480(NTSC) IPS 352X240 Resolution	480(NTSC) IPS 704X240 Resolution	480(NTSC) IPS 704X480 Resolution
Intellex DVMS	480(NTSC) IPS 352X240 Resolution	480(NTSC) IPS 704X240 Resolution	240(NTSC) IPS 704X480 Resolution
Intellex LT	480(NTSC) IPS 352X288 Resolution	240(NTSC) IPS 704X240 Resolution	120(NTSC) IPS 704X480 Resolution

PAL	1CIF	2CIF	4CIF
Intellex Ultra	400(PAL) IPS 352X288 Resolution	400(PAL) IPS 704X288 Resolution	400(PAL) IPS 704X576 Resolution
Intellex DVMS	400(PAL) IPS 352X288 Resolution	400(PAL) IPS 704X288 Resolution	200(PAL) IPS 704X576 Resolution
Intellex LT	400(PAL) IPS 352X288 Resolution	200(PAL) IPS 704X288 Resolution	100(PAL) IPS 704X576 Resolution

NOTE: Only the original resolutions, 320 X 240 and 640 X 240, are available when running on a non Intellex v4.3 video capture card DVMS / LT platform.

Intellex DVMS/LT Auto Rate Mode

When the new Intellex v4.3 video capture card is installed in a DVMS or LT platform, the Auto Rate mode is no longer supported. Therefore this option has been removed from the Intellex platform and is no longer available on the **Setup->Schedule-> Mode Dialogue**. The user must use the camera Selectable rate to set rates.

Intellex API Updates

The Intellex API and sample applications are updated to utilize the increased aggregated frame rates and the increased image resolution for Ultra, DVMS and LT platforms. For systems unable to operate in Auto Rate Mode, the API has been updated to support Camera Selectable Rate mode. The API shall provide the ability to set the individual camera rate.

Audio Support

Intellex software no longer requires an additional USB audio device to be installed in the Intellex Ultra unit for recording and playback of audio. This unit makes use of an installed audio card as opposed to the onboard Audio as exists on the DVMS and LT systems. The Intellex IP R200 unit will still require the USB audio device.

The New Display Library

Intellex software has been updated to use the new Display library which improves composite output performance on the Intellex Ultra and improves CPU efficiency on Network Client applications when deployed in a VMK configuration.

Compatibility

Network Client, Browser Client, Policy Manager, Archive Manager and Intellex Player have been updated to be compatible with Windows Vista Business SP1, Windows Vista Ultimate SP1, Windows Vista Enterprise SP1 and Server 2008 operating Systems.

Presets and Patterns

Due to the new display architecture, the preset and patterns camera controls selection has changed from a dropdown to a + and – (plus and minus) for navigating through the presets and patterns.



Figure 2: Preset Camera Controls

Known Limitations and Issues

The table below highlights known new limitations or issues against the 4.30 release only. Known limitations and issues may exist from other releases. Please refer to the specific release for the appropriate information.

Description	Suggested Work-Around
6234 – Network Client Event Handler Client will not communicate with a lower version of the Network Client Event Server	The NC Event Handler Client needs to be the same or a later version of the Network Client
6544 – Intellex GUI does not display correctly when swapping to a widescreen monitor with a lower max resolution	When swapping monitors on Intellex that are switched to a fairly high resolution it will be necessary to switch the resolution down before swapping as some monitors will not be able to handle the high resolutions of other monitors.
6398 - 4.3:Nf:WS: elongation problem with the video on widescreen	Customers using Widescreen Monitors with 16x9 and 16x10 aspect ratios, need to use the optimal resolution setting of that monitor to achieve best picture quality
6606 - Uninstalling PM v4.3 will prevent reinstalling an older version of PM	Users needs to remove two dlls (Ntlxdatetime.dll and NtlxLogger.dll) were after uninstalling PM v4.3.
7124 - When uninstalling Policy Manager proxy client from an Intellex 4.2 or lower, a fatal network error is thrown	The user should not uninstall the Policy Manager remote services application proxy but the main Policy Manager program.
6993 – Unable to view help file for IP Source 4 Channel Encoder	Go to Unit Setup -> IP sources Select Add - > AD 4 Channel encoder from DDL Select an encoder from auto discovery tool Select Add Select Help The Help window appears behind the Add Dialog Close the dialog and the help window will be visible
A separate camera handler has been added to allow Intellex to interface a MPLT matrix.	Go to Setup -> Cameras -> Camera Control Select the MPLT camera handler.
Error code FFFFA0FF on Intellex start up	If the user sees this error, they need to restart the unit.
The 56K modem card (RDVUPGM1) is no longer supported in Intellex v4.3 units	

Description	Suggested Work-Around
The SCSI interface cards (RDVUPGSCSI01) is no longer supported in Intellex v4.3 units	

Closed Limitations & Issues

The table below lists limitations or issues previously published, which are now fixed in this release:

Limitations	Comments
5426 – VW16E/ADTT16E Dome control remains on camera 1 when upgrading from 4.17 to 4.20.	
5487 – Intellex Player does not run when using an exported clip CD on a Vista Platform	
5884 – On Network Client it is not possible to launch the NC App with Event Server enabled with Network Profile setup	Documentation has been updated to inform installers on how to setup this functionality
5635 – when removing Hybrid dome from IO board video loss message does not appear on 1 in 30 occasions	
5885 – Exported audio clip doesn't function properly on Vista OS	
5815 – Instrument is not always removed from instrument list when Event Service Manager is running on Vista OS	
5874 – Database created on Shared drive doesn't show in video export database selection when A or B is used as a drive letter	
5914 – Single Camera schedule is not available in Network Client 4.20 when connect to an Intellex 4.10	
5811 – Camera Control Functionality effected when IP source changed from Sony RX550N to Sony RZ30P.	
5983 – User able to view recorded video through streaming playback even when user account has been denied access recorded video.	
5990 – When using Network Client to an Intellex 4.12 and previous causes a warning message to pop up when modifying camera setup.	
5965 – Schedule filters are being corrupted through consist editing of filters on Intellex schedule setup	

Limitations	Comments
5947 – Wrong message is returned when connected to non-PTZ camera via the CamCrtServiceSetup API	
5941 – Pan Left and Right fails to pan when using the CamCrtServiceSetup API when connect to an Intellex IP	
5942 – Camera speeds not modified when using CamCrtServiceSetup API when connect to an Intellex IP.	
5886 – Error message appears when starting Network Client with a network profile when ESS is running.	
6192 (6207) – Pattern program bar remains on screen after cancelling with the BBVStar	<p>After the issue occurs:</p> <ul style="list-style-type: none"> - Click Dome Control - Click Pattern button - Click Define Pattern again - Click Stop/Cancel button again <p>To prevent the issue occurring:</p> <ul style="list-style-type: none"> - Ensure that the Play button is clicked before clicking the Stop/Cancel button