



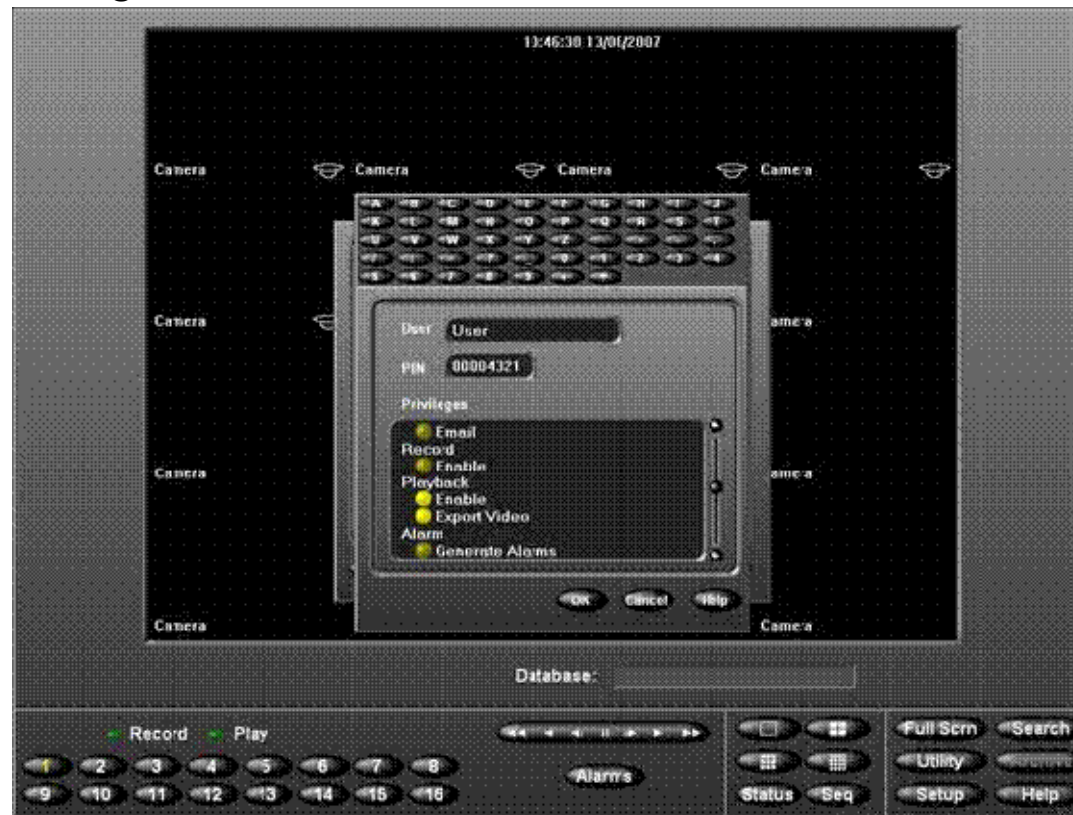
## New Features in Intellex v4.2

- Client Connections
  - Increasing the number of connections to an Intellex from 10 to 20
    - ◆ Increasing number of connections will effect system performance
    - ◆ Evaluating Software Options to increase system performance
- Windows Vista Compatibility
  - Network Client, Browser Client, Archive Manager, Policy Manager will be tested with Windows Vista OS platform
    - ◆ Business, Ultimate, and Enterprise versions
- Pocket Client Qualification on Windows Mobile 6 OS
- Millisecond resolution on Intellex API
  - Increase resolution capability on API to millisecond resolution versus current second resolution
  - Required by POS/Data Mining applications to align with POS applications



## New Features in Intellex v4.2

- Export function isolated from Playback
  - Customers want the ability to view playback video but not export video clips based on security privileges
  - Instituting change in Security → Setup menu to offer export as a security privilege



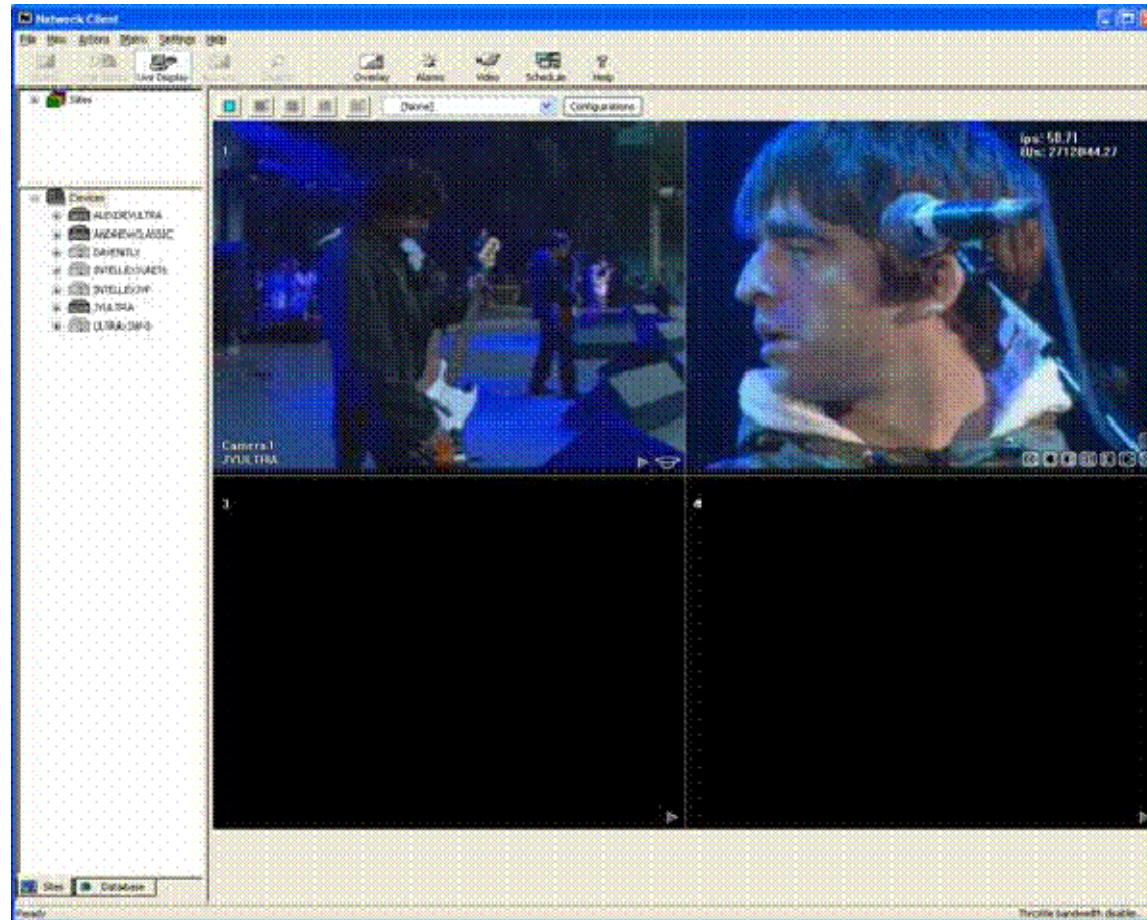


## New Features in Intellex v4.2

- Streaming Playback on Network Client
  - Allows remote user to view recorded video without having to download the video to the client machine
  - Simulates playback operation in DVR much more closely
  - Will support streaming directly from the Intellex
  - Ability to view live and streaming playback simultaneously
  - Slider Bar implemented to view stored video



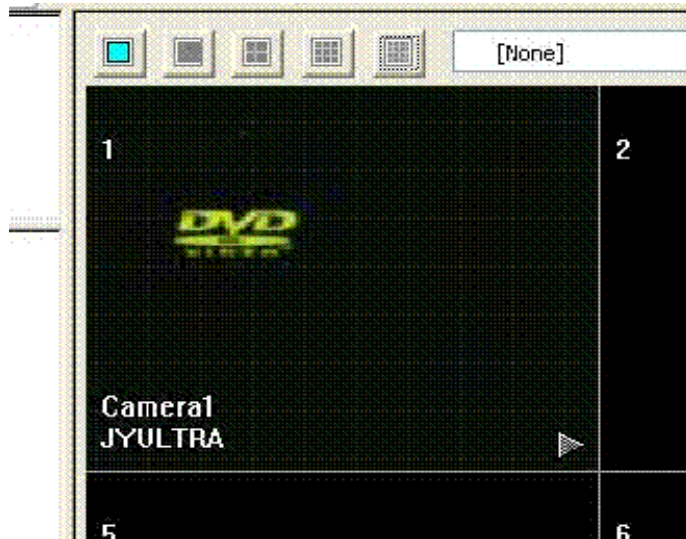
## New Features in Intellex v4.2



- Example of simultaneous live and streaming playback capability



## New Features in Intellex v4.2



- Streaming Playback button on NC



- Playback Controls available on NC



## New Features in Intellex v4.2

- Incident Clip Builder
  - Allows user to concatenate exported video clips previously stored on NC
  - Allows user to create a storyboard of a single incident occurring over multiple cameras
  - Incident Log is kept detailing aspects of each individual video incident
  - Users can attach reports in Word, .txt, .rtf format



# New Features in Intellex v4.2

The screenshot shows the Intellex v4.2 Incident Builder software interface. The interface is divided into several sections:

- Project Workspace:** A tree view on the left showing project assets, including '6.2 AVI Assets' and 'Incident Storyboards'.
- Video playback:** A central window showing a video feed from an office camera with playback controls (play, stop, previous, next, full screen).
- Incident Name:** A field containing 'NewStory'.
- Incident Overview:** A text area containing 'This is an overview for the incident that took place'.
- Asset Information:** A panel on the right showing details for 'Ca\_Camera142', including device name, file name, camera name, and incident start/end times.
- Incident Details:** A text area containing 'These are the details regarding incident #1'.
- Storyboard:** A section at the bottom showing a grid of video thumbnails from different cameras.
- Scene Details:** A section at the bottom right showing details for the selected scene.

FIGURE 6.1 Storyboard View..



# New Features in Intellex v4.2

The screenshot shows the 'IncidentBuilder - New Project' window. The interface is divided into several sections, with red boxes highlighting specific areas and arrows pointing to them from labels on the left:

- Header:** Points to the 'INCIDENT LOG REPORT:' section, which includes 'REPORT NAME: Incident\_1' and 'CREATION DATE: 10:47:55 01-23-2005'.
- it:** Points to the 'INCIDENT OVERVIEW:' section, which contains the text 'Here is an overview for the incident.'
- it Details:** Points to the 'INCIDENT DETAILS:' section, which lists two items:
 

Item Name:	Camera14	Source:	Ca_Camera14.img
Start Time:	07:49:37 01-23-20	Camera:	Camera14
End Time:	07:50:36 01-23-20	Device:	California
Description:	This is item 1		

The interface also includes a 'Project Workspace' tree on the left, a 'Report Options' section at the bottom with a 'Location' dropdown and a 'Publish' button, and a Windows taskbar at the bottom.





## New Features in Intellex v4.2

- Fast discovery of Intellex Units by NC
  - Use ESS to inform Network Client of status of Intellex units
- Central Password Management
  - Passwords for the Network Client will be configured and stored on the ESS
  - NC will validate passwords with ESS each time the user tries to access password protected operations
- Alarm Storage on ESS
  - Alarms will be stored on ESS as well as written to a file/database for permanent storage
  - All NC users will be notified if an alarm is deleted from an individual client station
- NC Instrument and Event Setup Changes
  - Will allow Client machines to be configured automatically from global configuration data stored on the ESS (User specified option)