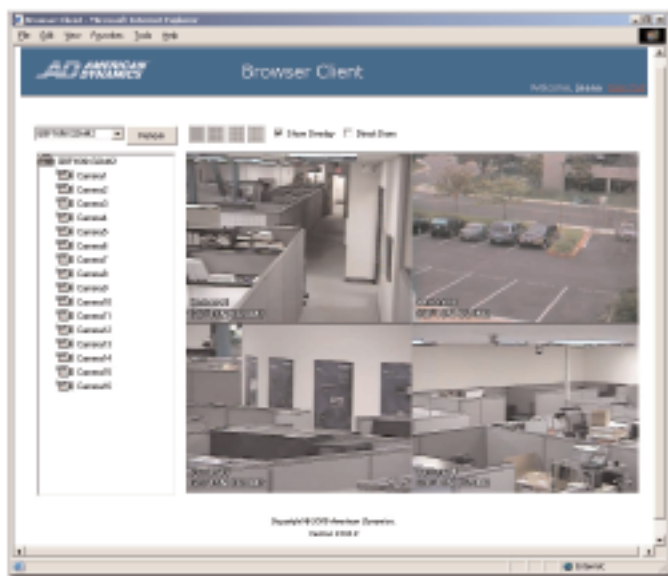




Browser Client v2.0

BROWSER-BASED INTELLEX® VIDEO CLIENT



FEATURES

- Create and manage a website to host Intellex video
- Restrict access to authorized users
- Choose which users can see which Intellex units
- View live Intellex video through a web browser
- Control domes from a remote location
- Client plug-in installs automatically on first use

With Browser Client v2.0, your organization can make live Intellex video available to any authorized user via a web browser. This free software package makes it easy for IT administrators to set up a dedicated website for viewing Intellex video, define which Intellex units to make available for viewing, and set-up and administer a group of authorized users.

Authorized users access the Intellex video web site by entering a URL provided by the administrator in the address bar of their Microsoft® Internet Explorer web browser. After they log in to the website on their first visit, a plug-in is downloaded and installed in their web browser. This allows the user to select and view cameras from a predetermined list of available Intellex units and even provides access to remote dome control. Users can choose to view a single camera or multiple cameras in 2 x 2, 3 x 3 or 4 x 4 panes.

The Browser Client v2.0 server software runs on Microsoft's® Internet Information Services. Website and user administration is improved from Browser Client v 1.x and is now browser-based. Users accessing Intellex video via the website can use any Windows computer with Internet Explorer v6.0 or greater.

SPECIFICATIONS

Operational

Remote AccessVia LAN, WAN, Internet,
 or Dial-up
 Maximum number of concurrent connections to an Intellex unit
 Intellex DVMS, RMS, and IP (v3.2 SP1) . .Ten
 Intellex LT (v2.6 SP1)Five
 LanguageEnglish

Minimum Client and Server Computer Requirements

Client, running Browser Client:
 - Pentium 400 MHz or higher
 - 128 MB RAM
 - Windows® 2000, Windows XP
 - Microsoft® Internet Explorer v6.0 or higher

Server, hosting video for Browser Client:
 - Pentium 400 MHz or higher
 - 64 MB RAM
 - Windows 2000 Pro or Server, Windows 2003 Server, Windows XP Pro
 - Internet Information Server (IIS) v5.1 or v6.0
 - .NET Runtime v1.1
 - Network Card, 10BaseT or 100BaseT

Minimum Network Requirements

- TCP/IP network for server that hosts video
- TCP/IP or dial-up capability for computers that accesses the Browser Client website
- An IP address for each Intellex unit to be made available via the website

Minimum Intellex Requirement

- Intellex running software v3.1/v 2.5 or greater

Order Information

Browser Client v2.0 is available free of charge from www.americandynamics.net

BASIC SYSTEM DIAGRAM

